

Passenger and Operational Statistics
December-15



<u>Harrisburg International Airport</u>	<u>Dec-15</u>	<u>Dec-14</u>	<u>% Change</u>	<u>2015 YTD</u>	<u>2014 YTD</u>	<u>% Change</u>
Enplaned Passengers	42,587	49,088	(13.2)	590,262	649,543	(9.1)
Total Passengers	83,507	97,051	(14.0)	1,173,938	1,289,487	(9.0)
Departing Load Factor	79.6	78.1	1.5	81.5	81.9	(0.4)
Departing Seat Capacity	53,151	62,871	(15.5)	723,075	791,688	(8.7)
Total Cargo Tonnage	5,861.0	5,163.7	13.5	51,401	48,922	5.1
Commercial Landed Weight	105,285,841	97,096,802	8.4	1,024,610,339	1,036,550,172	(1.2)

<u>MDT Operations</u>	<u>Dec-15</u>	<u>Dec-14</u>	<u>% Change</u>	<u>2015 YTD</u>	<u>2014 YTD</u>	<u>% Change</u>
Commercial Air Carriers	2,479	2,467	0.5	29,305	31,370	(6.6)
General Aviation	693	607	14.2	9,365	10,187	(8.1)
Military	488	670	(27.2)	8,619	8,774	(1.8)
Total MDT operations	3,660	3,744	(2.2)	47,289	50,331	(6.0)

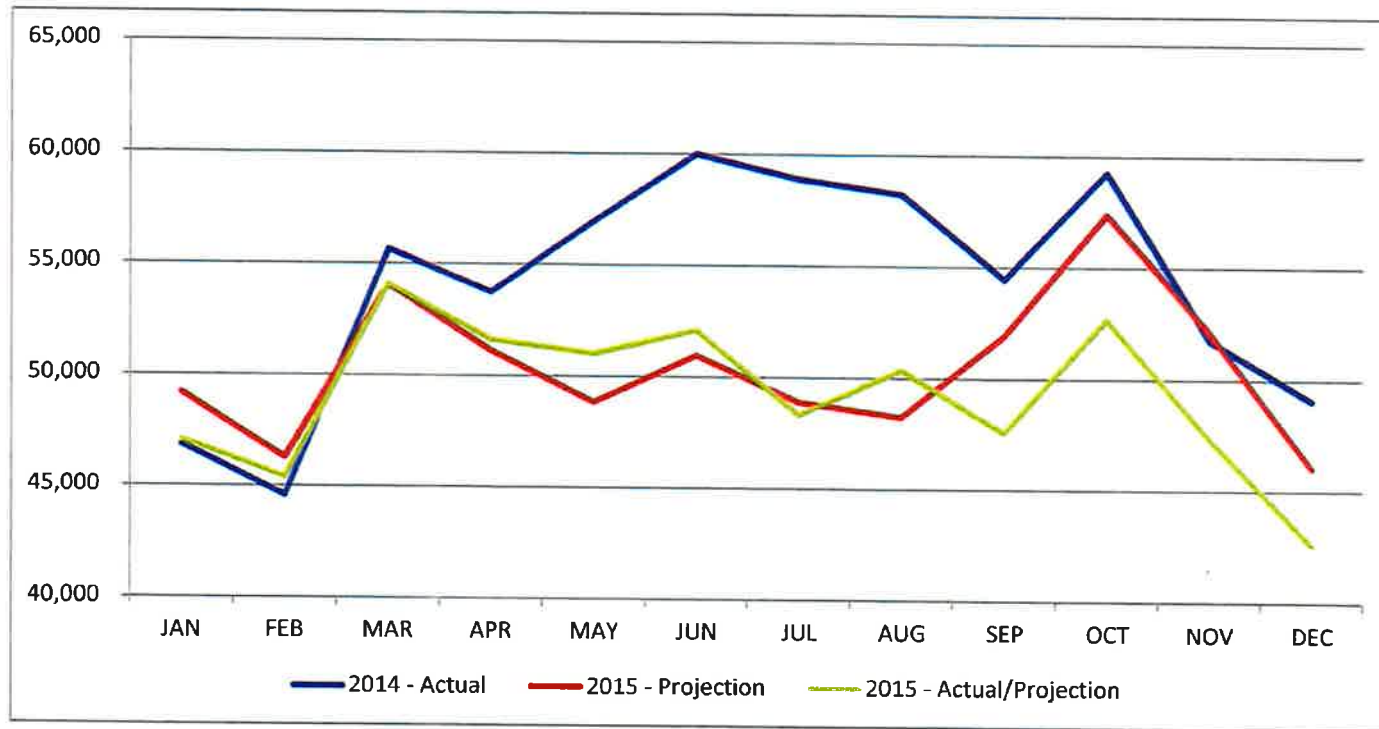
<u>CXY Operations</u>	<u>Dec-15</u>	<u>Dec-14</u>	<u>% Change</u>	<u>2015 YTD</u>	<u>2014 YTD</u>	<u>% Change</u>
General Aviation	970	1,163	(16.6)	17,881	17,752	0.7
Military	95	28	239.3	2,643	3,240	(18.4)
Air Taxi	34	42	(19.0)	577	478	20.7
Total CXY Operations	1,099	1,233	(10.9)	21,101	21,470	(1.7)



MDT Enplanements vs. 2015 Projection

	JAN	FEB	MAR	APR	MAY	JUN	JUL	AUG	SEP	OCT	NOV	DEC	Total
2014 - Actual	46,864	44,586	55,640	53,759	56,967	60,012	58,903	58,239	54,457	59,263	51,765	49,088	649,543
2015 - Projection	49,188	46,259	54,072	51,105	48,836	50,945	48,894	48,250	51,903	57,367	52,116	46,039	604,974
2015 - Actual/Projection	47,102	45,388	54,084	51,629	51,028	52,100	48,341	50,371	47,580	52,687	47,365	42,587	590,262

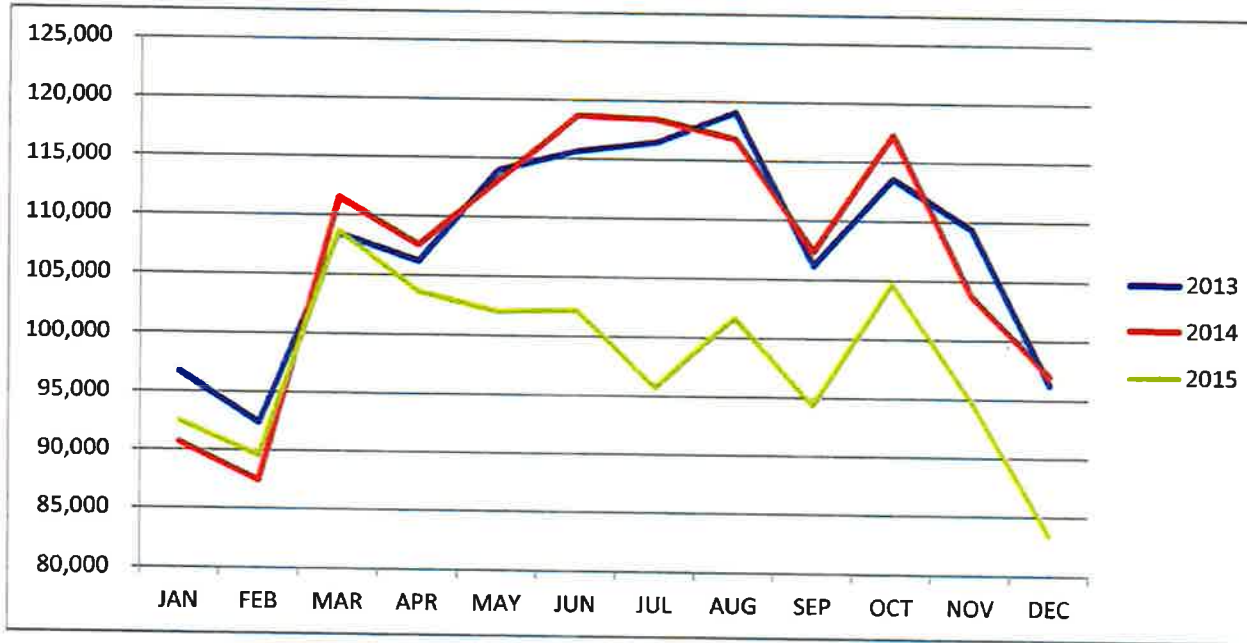
Note: 2015 actual in chart above includes enplaned charter passengers which are not included in the annual projection



Airline	Dec-15			2015			2015		
	Actual	Projection	% Change	Actual	Projection	% Change	Actual	Actual	% Change
American/US	17,439	19,293	(9.6)	226,019	236,745	(4.5)	226,019	247,090	(8.5)
United	8,808	9,087	(3.1)	131,241	133,437	(1.6)	131,241	150,660	(12.9)
Delta Air Lines	11,333	11,480	(1.3)	164,320	164,730	(0.2)	164,320	157,588	4.3
Frontier	0	0	0.0	11,095	10,588	0.0	11,095	45,379	(75.6)
Air Canada	447	296	50.8	6,140	5,148	19.3	6,140	5,885	4.3
Allegiant	4,268	3,434	24.3	50,719	54,326	(6.6)	50,719	41,887	21.1
Subtotal	42,295	43,591	(3.0)	589,534	604,974	(2.6)	589,534	648,489	(9.1)

MDT Total Passengers

	JAN	FEB	MAR	APR	MAY	JUN	JUL	AUG	SEP	OCT	NOV	DEC	Total
2013	96,700	92,398	108,439	106,211	113,978	115,682	116,531	119,133	106,218	113,604	109,403	96,335	1,294,632
2014	90,692	87,368	111,453	107,524	113,097	118,659	118,404	116,842	107,321	117,298	103,778	97,051	1,289,487
2015	92,526	89,597	108,657	103,663	102,089	102,243	95,790	101,761	94,385	104,726	94,994	83,507	1,173,938

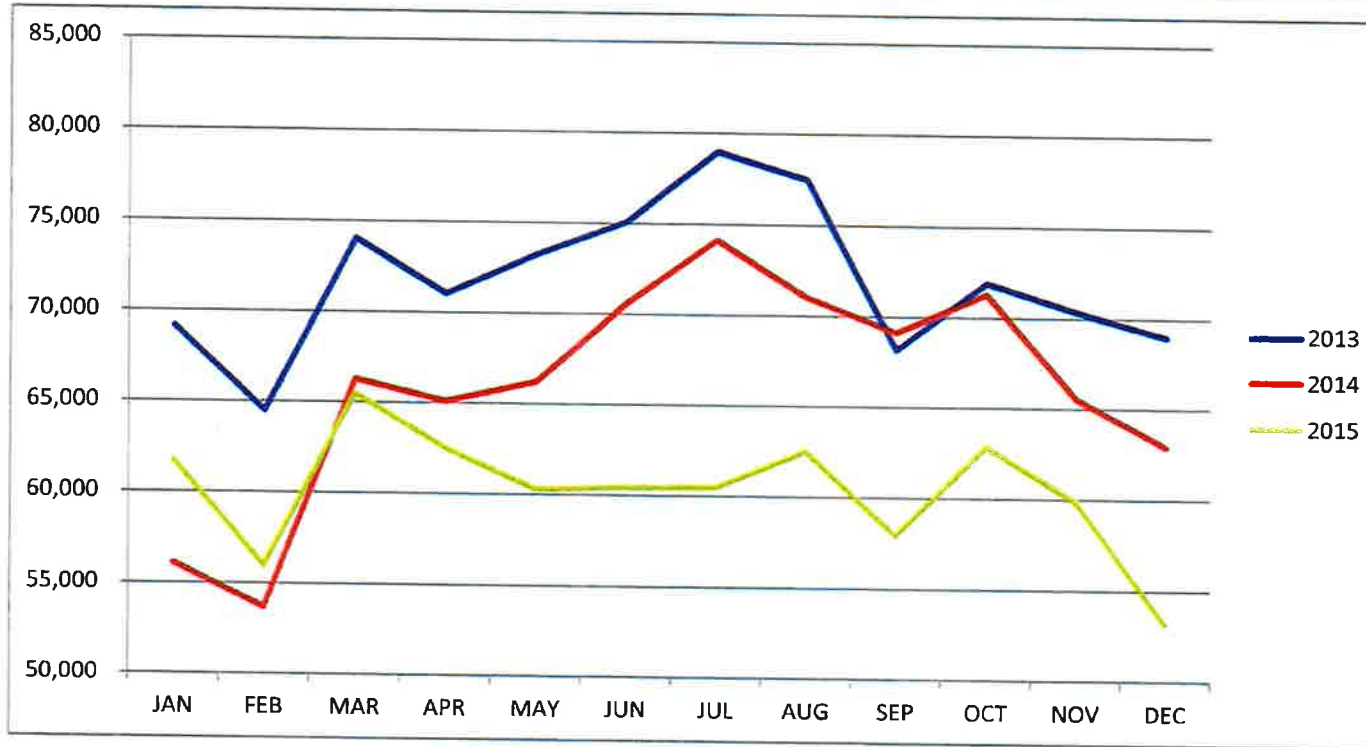


Airline	Dec-15	Dec-14	% Change	2015 Share
US Airways	27,841	31,456	(11.5)	33.3%
United	17,563	18,672	(5.9)	21.0%
Delta Air Lines	22,398	21,901	2.3	26.8%
Frontier	0	8,255	(100.0)	0.0%
American	6,409	7,899	(18.9)	7.7%
Air Canada	864	714	21.0	1.0%
Allegiant	8,140	8,154	(0.2)	9.7%
Subtotal	83,215	97,051	(14.3)	99.7%
Charters	292	0	100.0	0.3%
Total Passengers	83,507	97,051	(14.0)	100.0%
New AA (AA+US)	34,250	39,355	(13.0)	41.0%

2015 YTD	2014 YTD	% Change	15 YTD Share
357,663	391,932	(8.7)	30.5%
260,702	299,986	(13.1)	22.2%
327,198	313,201	4.5	27.9%
21,732	90,063	(75.9)	1.9%
91,757	97,357	(5.8)	7.8%
12,468	11,351	9.8	1.1%
101,381	83,804	21.0	8.6%
1,172,901	1,287,694	(8.9)	99.9%
1,037	1,793	(42.2)	0.1%
1,173,938	1,289,487	(9.0)	100.0%
449,420	489,289	(8.1)	38.3%

MDT Departing Seats

	JAN	FEB	MAR	APR	MAY	JUN	JUL	AUG	SEP	OCT	NOV	DEC	Total
2013	69,176	64,484	74,057	71,048	73,263	75,092	78,986	77,506	68,182	71,935	70,374	69,003	863,106
2014	56,082	53,641	66,247	65,074	66,173	70,575	74,111	70,998	69,121	71,270	65,525	62,871	791,688
2015	61,714	55,968	65,476	62,480	60,274	60,417	60,476	62,495	57,916	62,825	59,883	53,151	723,075



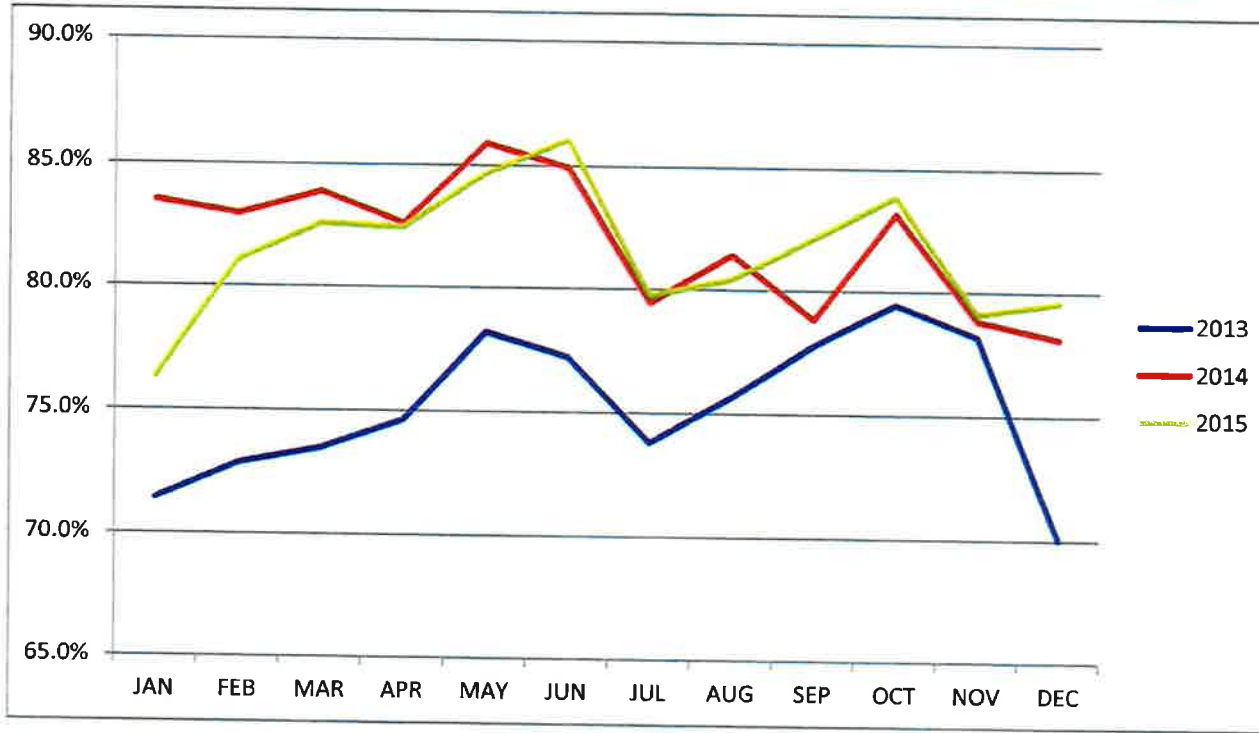
Airline	Dec-15	Dec-14	% Change	2015 Share
US Airways	18,517	19,843	(6.7)	34.8%
United	11,730	13,073	(10.3)	22.1%
Delta Air Lines	13,304	13,416	(0.8)	25.0%
Frontier	0	5,322	(100.0)	0.0%
American	4,094	5,825	(29.7)	7.7%
Air Canada	792	756	4.8	1.5%
Allegiant	4,714	4,636	1.7	8.9%
Total Seats	53,151	62,871	(15.5)	100.0%

	2015 YTD	2014 YTD	% Change	15 YTD Share
US Airways	218,124	238,084	(8.4)	30.2%
United	171,117	193,757	(11.7)	23.7%
Delta Air Lines	193,227	190,084	1.7	26.7%
Frontier	12,006	50,268	(76.1)	1.7%
American	61,083	62,687	(2.6)	8.4%
Air Canada	10,890	10,620	2.5	1.5%
Allegiant	56,628	46,188	22.6	7.8%
Total Seats	723,075	791,688	(8.7)	100.0%

New AA (AA+US)	22,611	25,668	(11.9)	42.5%	279,207	300,771	(7.2)	38.6%
----------------	--------	--------	--------	-------	---------	---------	-------	-------

MDT Departing Load Factors

	JAN	FEB	MAR	APR	MAY	JUN	JUL	AUG	SEP	OCT	NOV	DEC	Total
2013	71.5%	72.9%	73.5%	74.6%	78.2%	77.2%	73.8%	75.7%	77.8%	79.5%	78.2%	70.1%	75.3%
2014	83.5%	82.9%	83.9%	82.6%	85.9%	84.9%	79.4%	81.4%	78.8%	83.2%	79.8%	78.1%	81.9%
2015	76.3%	81.1%	82.6%	82.5%	84.7%	86.1%	79.7%	80.4%	82.2%	83.9%	79.1%	79.6%	81.5%

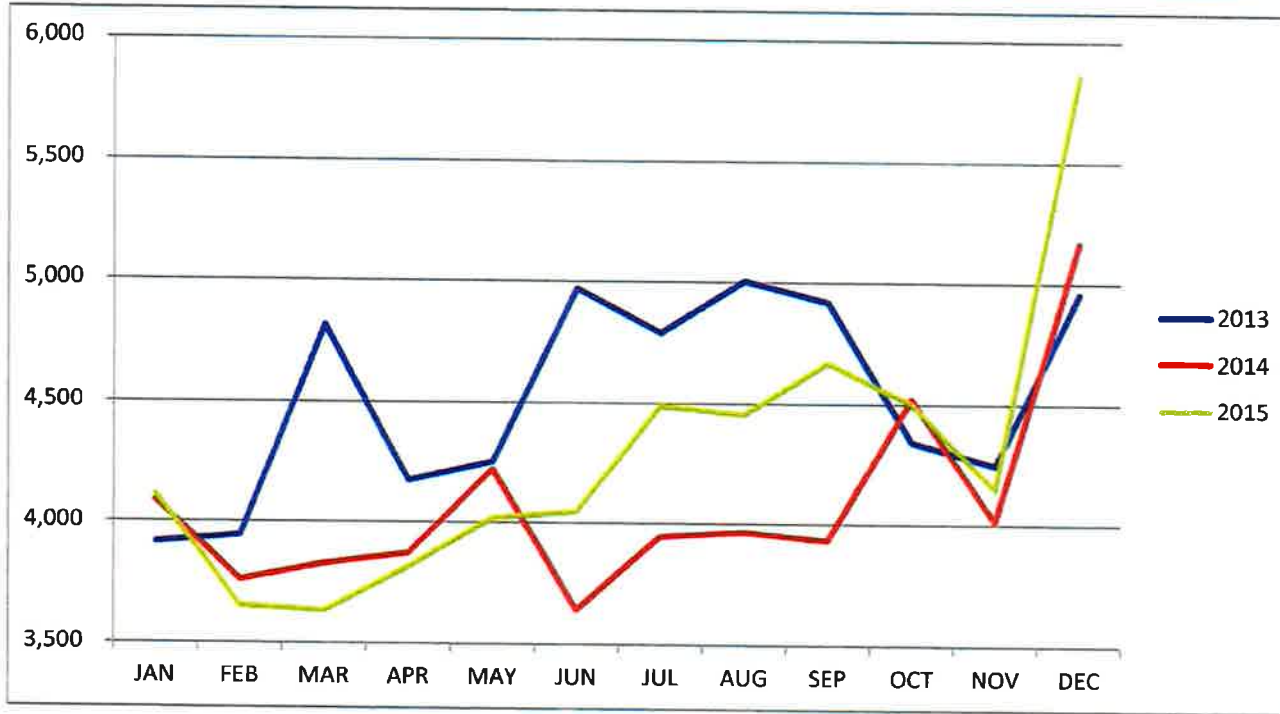


Airline	Dec-15	Dec-14	Change
US Airways	75.9%	78.9%	(3.0)
United	75.1%	74.2%	0.8
Delta Air Lines	85.2%	81.1%	4.0
Frontier	0.0%	79.5%	
American	82.8%	70.8%	12.0
Air Canada	56.4%	45.6%	10.8
Allegiant	90.5%	89.2%	1.3
Total Load Factor	79.6%	78.1%	1.5

	2015 YTD	2014 YTD	Change
	82.2%	83.0%	(0.8)
	76.7%	77.8%	(1.1)
	85.0%	82.9%	2.1
	92.4%	90.3%	2.1
	76.4%	78.9%	(2.5)
	56.4%	55.4%	1.0
	89.6%	90.7%	(1.1)
	81.5%	81.9%	(0.4)
	81.0%	82.2%	(1.5)

MDT Total Cargo Tonnage

	JAN	FEB	MAR	APR	MAY	JUN	JUL	AUG	SEP	OCT	NOV	DEC	Total
2013	3,915	3,944	4,816	4,174	4,255	4,972	4,791	5,007	4,920	4,344	4,248	4,958	54,344
2014	4,086	3,756	3,824	3,869	4,220	3,638	3,942	3,963	3,929	4,520	4,011	5,164	48,922
2015	4,113	3,652	3,634	3,814	4,018	4,048	4,048	4,453	4,670	4,502	4,148	5,861	51,401

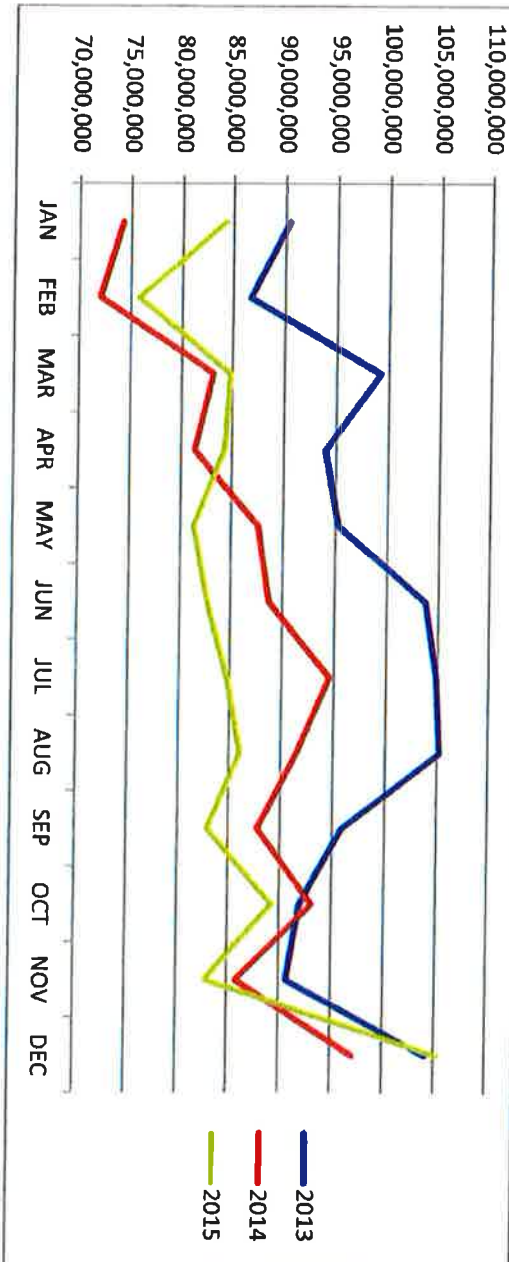


Cargo Tonnage	Dec-15	Dec-14	% Change	2015 Share
Federal Express	2,637.7	2,200.9	19.8	45.0%
UPS	3,061.0	2,738.8	11.8	52.2%
Other cargo	153.8	216.6	(29.0)	2.6%
Commercial	8.5	7.4	14.6	0.1%
Total	5,861.0	5,163.7	13.5	100.0%

	2015 YTD	2014 YTD	% Change	15 YTD Share
Federal Express	26,604.7	23,557.1	12.9	51.8%
UPS	22,964.4	22,893.4	0.3	44.7%
Other cargo	1,767.2	2,371.7	(25.5)	3.4%
Commercial	64.7	99.5	(34.9)	0.1%
Total	51,401.0	48,921.8	5.1	100.0%

MOT Landed Weight

	JAN	FEB	MAR	APR	MAY	JUN	JUL	AUG	SEP	OCT	NOV	DEC	Total
2013	90,417,943	86,734,208	99,207,432	94,024,836	95,330,508	103,783,347	104,904,103	105,258,567	95,911,584	91,970,678	90,747,418	104,163,354	1,162,453,978
2014	74,200,884	71,995,794	83,141,734	81,277,392	87,565,178	88,648,092	94,564,893	91,476,759	87,738,520	93,065,487	85,778,637	97,096,802	1,036,550,172
2015	84,337,238	75,851,453	84,865,406	84,314,200	81,330,950	82,733,259	84,738,850	86,088,340	82,966,504	89,270,206	82,828,092	105,285,841	1,024,610,339



Landed Weight	Dec-15	Dec-14	% Change	2015 Share	2015 YTD	2014 YTD	% Change	15 YTD Share
US Airways	17,763,150	19,002,800	(6.5)	16.9%	207,742,400	226,912,400	(8.4)	20.3%
United	10,868,877	11,746,404	(7.5)	10.3%	161,054,427	179,873,372	(10.5)	15.7%
Delta Air Lines	13,116,900	13,480,700	(2.3)	12.5%	191,058,522	184,305,900	3.7	18.6%
Frontier	0	4,734,398	(100.0)	0.0%	11,699,760	46,054,140	(74.6)	0.0%
Air Canada	730,400	697,200	4.8	0.7%	10,043,000	9,794,000	2.5	1.0%
American	3,576,876	5,802,248	(38.4)	3.4%	61,117,118	62,932,400	(2.9)	6.0%
Allegiant	3,922,188	3,804,272	3.1	3.7%	46,488,264	38,037,544	22.2	4.5%
Comm. Subtotal	50,038,391	59,268,022	(15.6)	47.5%	689,203,491	747,909,756	(7.8)	67.3%
Charters	630,000	0	#DIV/0!	0.6%	1,804,500	2,954,300	(38.9)	0.2%
Diversions	794,190	47,000	1,589.8	0.8%	10,108,488	11,884,708	(14.9)	1.0%
Cargo	53,823,260	37,781,780	42.5	51.1%	323,493,860	273,801,408	18.1	31.6%
Other Subtotal	55,247,450	37,828,780	46.0	52.5%	335,406,848	288,640,416	16.2	32.7%
Total	105,285,841	97,096,802	8.4	100.0%	1,024,610,339	1,036,550,172	(1.2)	100.0%
New AA (AA+US)	21,340,026	24,805,048	(14.0)	20.3%	268,859,518	289,844,800	(7.2)	26.2%