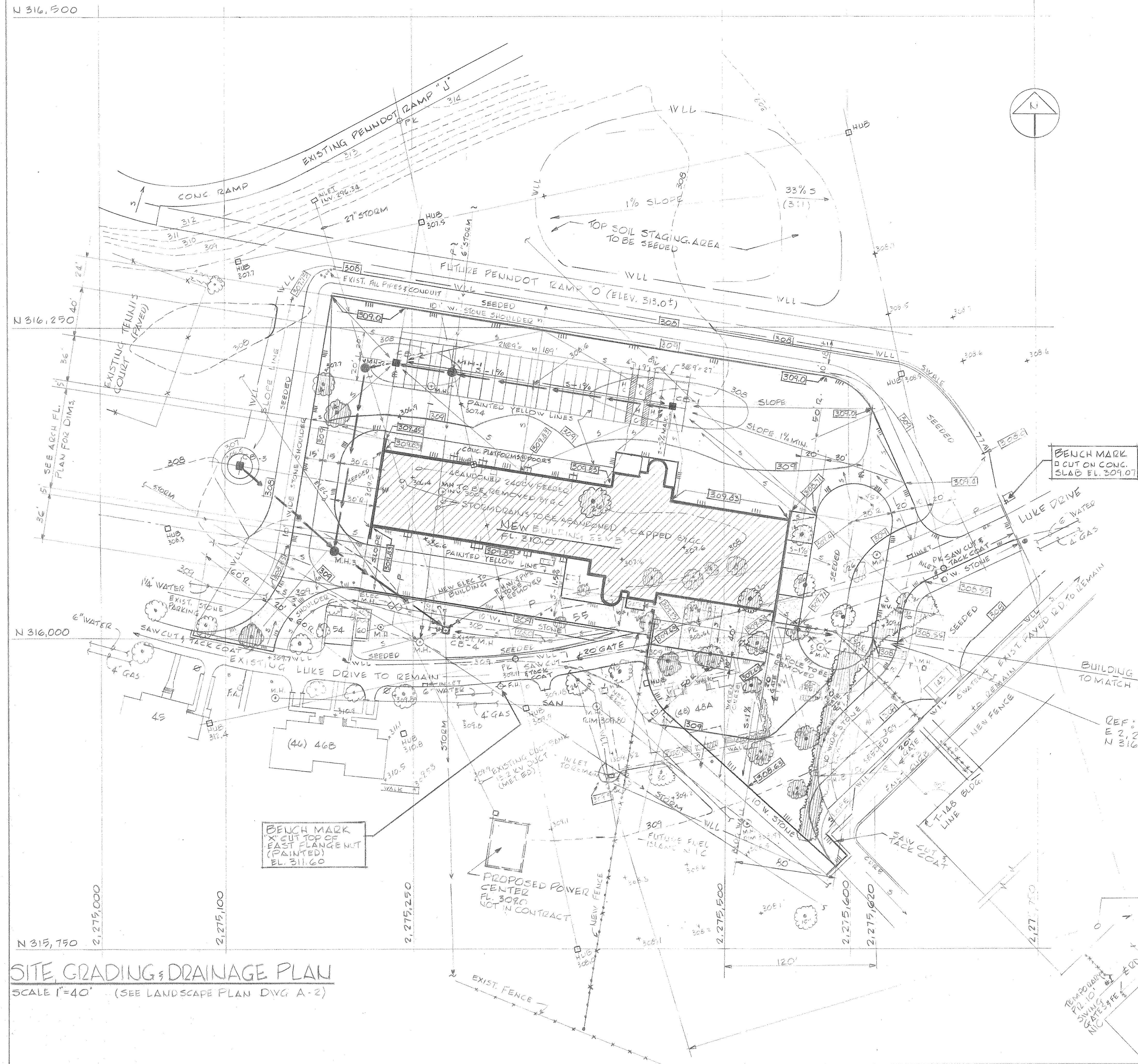


DRAIN LINE NO 1 (PROFILE) VERTICAL 1"=5' HORIZONTAL 1"=40'

DRAIN LINE NO 2 VERTICAL 1"=5' HORIZONTAL 1"=40'

SYMBOL	DESCRIPTION
---	EXISTING GRADE CONTOUR
---	NEW GRADE CONTOUR
+	EXISTING & NEW SPOT ELEVATION
---	EXISTING FENCE
---	NEW FENCE W/GATES
[]	NEW BUILDING
[]	EXISTING BUILDINGS
---	EXISTING ROADS
---	NEW PAVEMENT
---	NEW CONCRETE ON GRADE
[]	TREES & SHRUBS TO BE REMOVED
[]	TREES TO REMAIN
---	SURFACE SLOPE LINE
---	EXISTING STORM DRAIN
---	NEW STORM DRAIN
---	NEW STORM DRAIN MANHOLE
---	NEW STORM DRAIN INLET CB
---	EXISTING PIPE TO BE CAPPED
---	EXISTING GAS LINE
---	EXISTING WATER LINE
---	EXISTING SANITARY DRAIN
---	EXISTING POWER CONDUIT
---	EXISTING TELEPHONE CONDUIT
[]	EXISTING RESIDENCE BLDGS. TO BE REMOVED - SEE SPECS
---	T FITTING TO BE LOCATED TO INTERCEPT BLDG. STORM DRAIN SEE DWG. 2-1
---	EXISTING M.H. TO REMAIN
---	WORK LINE LIMIT (WLL)
---	WATER COURSE (REF DWG. A-2)

REFER TO H.V.A.C., PLUMBING & ELECTRICAL DWGS. FOR UTILITY WORK ABOVE & BELOW GRADE



PA. ACT 281 - USERS OF THE UNDERGROUND	
UTILITY	ADDRESS & CONTACT
GAS	UGI CORPORATION GAS DIVISION 1500 PAXTON ST. P.O. BOX 3565 HARRISBURG, PA. 17105 PROJECT # DGS-960-10 HARRISBURG INTERNATIONAL AIRPORT WILSON HILER 1(717) 234-5931
TELEPHONE	BELL TELEPHONE CO. OF PENNA. 400 S. SECOND STREET HARRISBURG, PA. 17104 E.R. ELICKER 1(717) 255-5159
WATER SEWER STORM ELECTRIC	HARRISBURG INTERNATIONAL AIRPORT AIRPORT FACILITIES DIVISION ANTHONY A. FERRAR 1(717) 944-7694

STORM DRAIN FIXTURE SCHEDULE		
IDENT.	RIM EL.	INVERTS IN AND OUT
CB-1	307.5	18" RCP OUT 304.0
MH-1	307.94	6" EXISTING IN 303.0 *
	* FIELD LOCATE	6" RCP OUT 300.4 *
CB-2	307.5	6" RCP IN 301.0 *
		18" RCP IN 299.5 *
		18" RCP OUT 299.25 *
MH-2	308.25	18" RCP IN 294.75 *
	* FIELD LOCATE	27" EXIST. IN 294.0 *
		30" RCP OUT 294.0 *
CB-3	307.0	18" RCP OUT 304.0
MH-3	309.1	30" RCP IN 293.31 *
		18" RCP IN 302.0 *
		33" RCP OUT 293.31 *
CB-4	307.25	33" RCP IN/OUT 292.63 *
		EXISTING M.H. TO BE REPAIRED FOR NEW INLET FRAME & GRATE

* - FIELD CONDITION

DEMOLITION WORK INCLUDES: EXISTING BUILDING #55 (ONE STORY BK), BUILDING #48/49A (2 1/2 STORY), WALKS, SHRUBS TREES INCLUDING STUMP/ROOT SYSTEM, 2" LOOP DRAIN AROUND BLDG #48/49A. PORTION OF LUKE DRIVE WALK & CURBS GUTTER/INLETS TO BE REMOVED TO SUIT NEW WORK WITHIN WORK LINE LIMIT (WLL). REFER TO PLUMBING & ELECTRICAL DWGS. FOR UTILITY ABOVE & BELOW GROUND. CONTRACTOR SHALL FIELD VERIFY UTILITY LOCATIONS PRIOR TO ANY EXCAVATION.

SURVEY INFO TAKEN FROM DWG. PREPARED BY BUREAU OF ENG. & ARCH. DEPT. OF GENERAL SERVICES HARRISBURG, PENNA. DRAWN 1"=40' DATED 5-14-80 AND COMMONWEALTH OF PENNA. DEPT. OF TRANSPORTATION, BUREAU OF AVIATION - HARRISBURG INTERNATIONAL AIRPORT CUMSTEAD FIELD, MAPPING & ROAD DATA.

REFER TO LANDSCAPE PLAN DWG. A-2 FOR PLANTING AREAS

DESCRIPTION		DESCRIPTION	
AS BUILT REVISIONS			
SUBMITTED	ARCHITECT		
SUBMITTED	ENGINEER		
APPROVED	DEPARTMENT OF TRANSPORTATION		
APPROVED			
CHECKED BY DEPARTMENT OF GENERAL SERVICES			
ARCH.	STRUCT.	H.V.A.C.	PLBG. ELECT. MISC.
COMMONWEALTH OF PENNSYLVANIA DEPARTMENT OF GENERAL SERVICES HARRISBURG, PENNSYLVANIA			
PROJECT NO. D.G.S. 960-10			
EMERGENCY EQUIPMENT & MAINTENANCE BUILDING HARRISBURG INTERNATIONAL AIRPORT MIDDLETOWN, DAUPHIN COUNTY, PENNSYLVANIA			
GERALD F. DE MARCO REGISTERED ARCHITECT 276 EAST GROVE AVE. CLARKS-SUMMIT, PENNA.		BURKAVAGE-EVANS ASSOCIATES CONSULTING ENGINEERS 709 NORTH STATE ST. CLARKS-SUMMIT, PENNA.	
SITE, GRADING & DRAINAGE PLAN			
DRAWN BY V.A.S.	DATE 11 AUG 80	DRAWING NO. A-1	
CHECKED BY G.H.E.	SCALE AS NOTED		