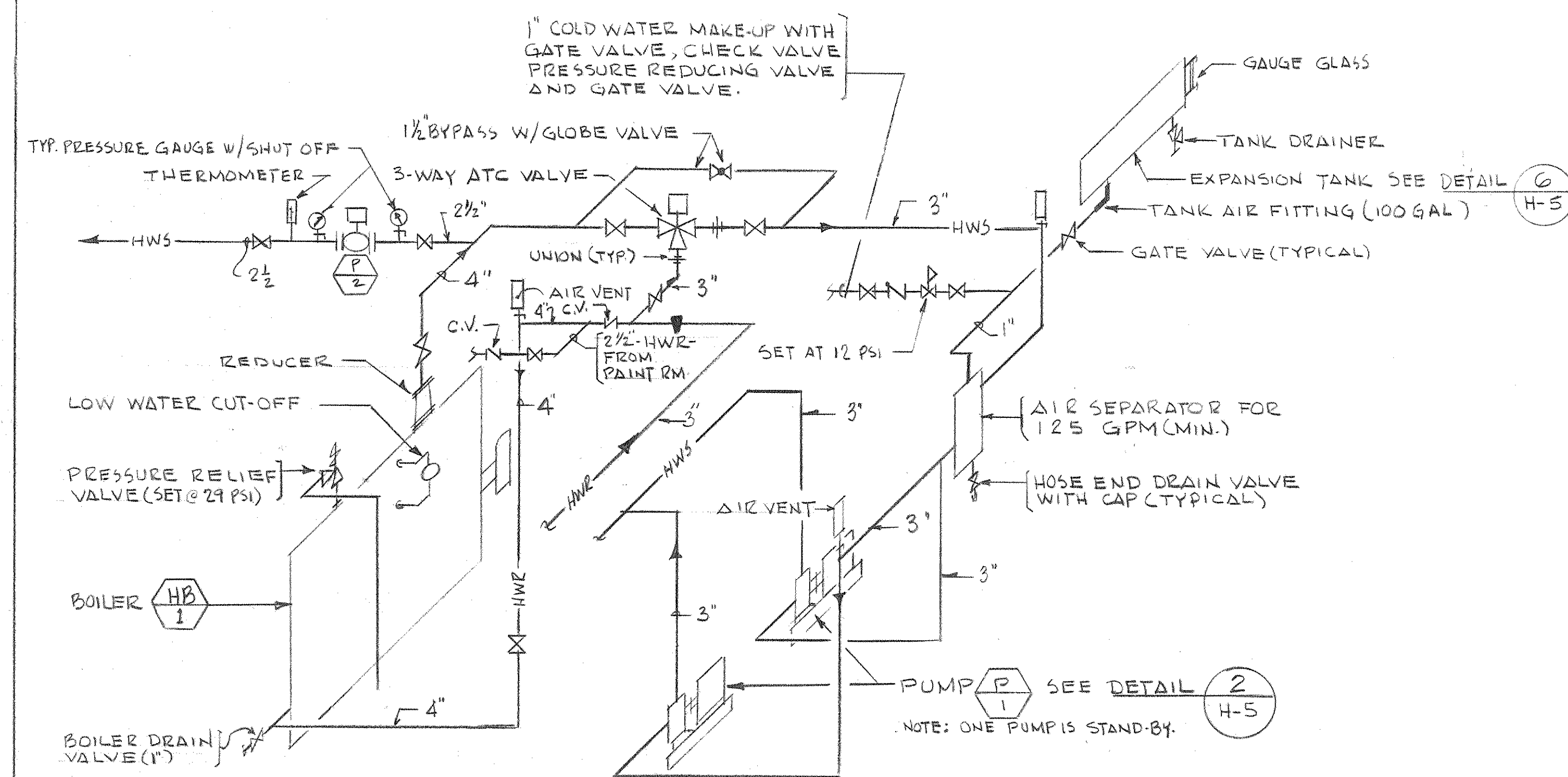


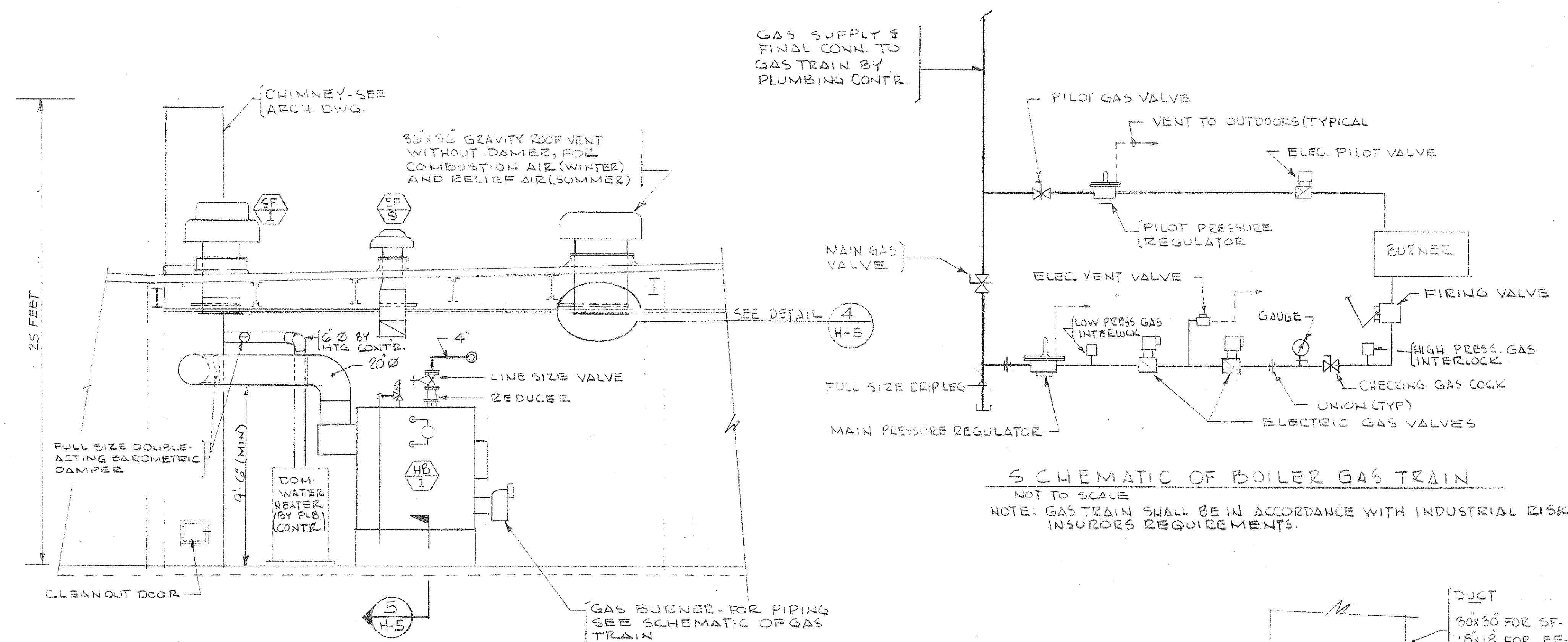
MECHANICAL EQUIPMENT ROOM PLAN

1/4" = 1'-0" NOTE: FOR CONTINUATION OF PIPING SEE DWG. H-2



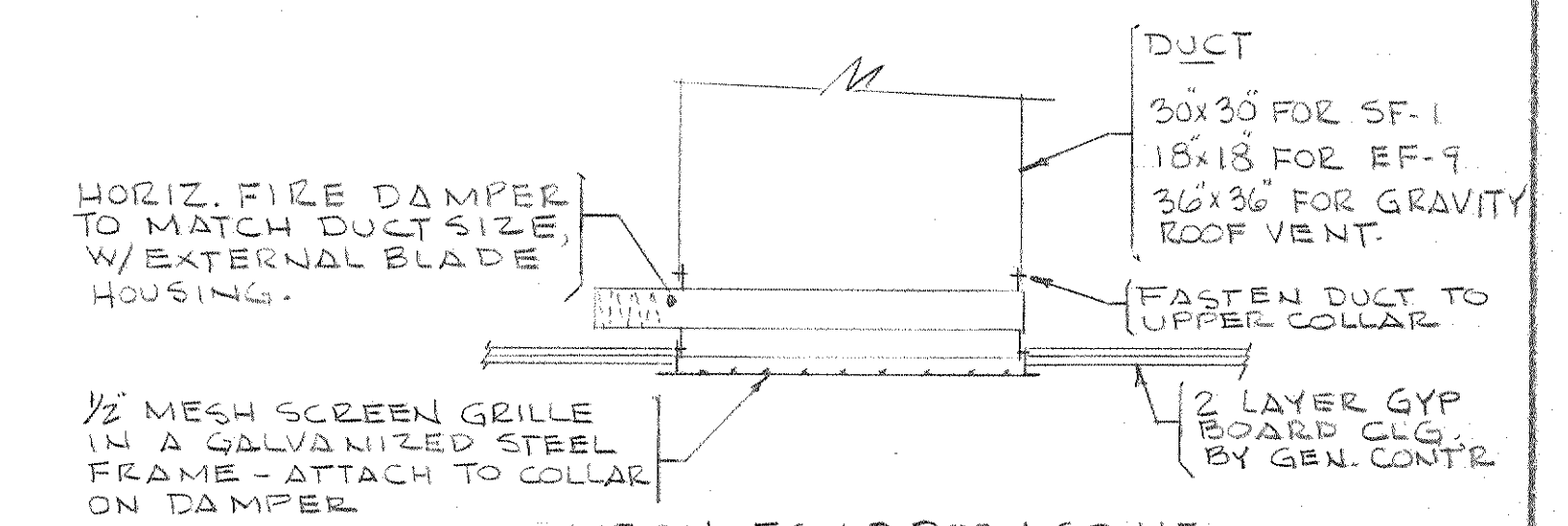
SCHEMATIC OF PIPING AT BOILER

NOT TO SCALE

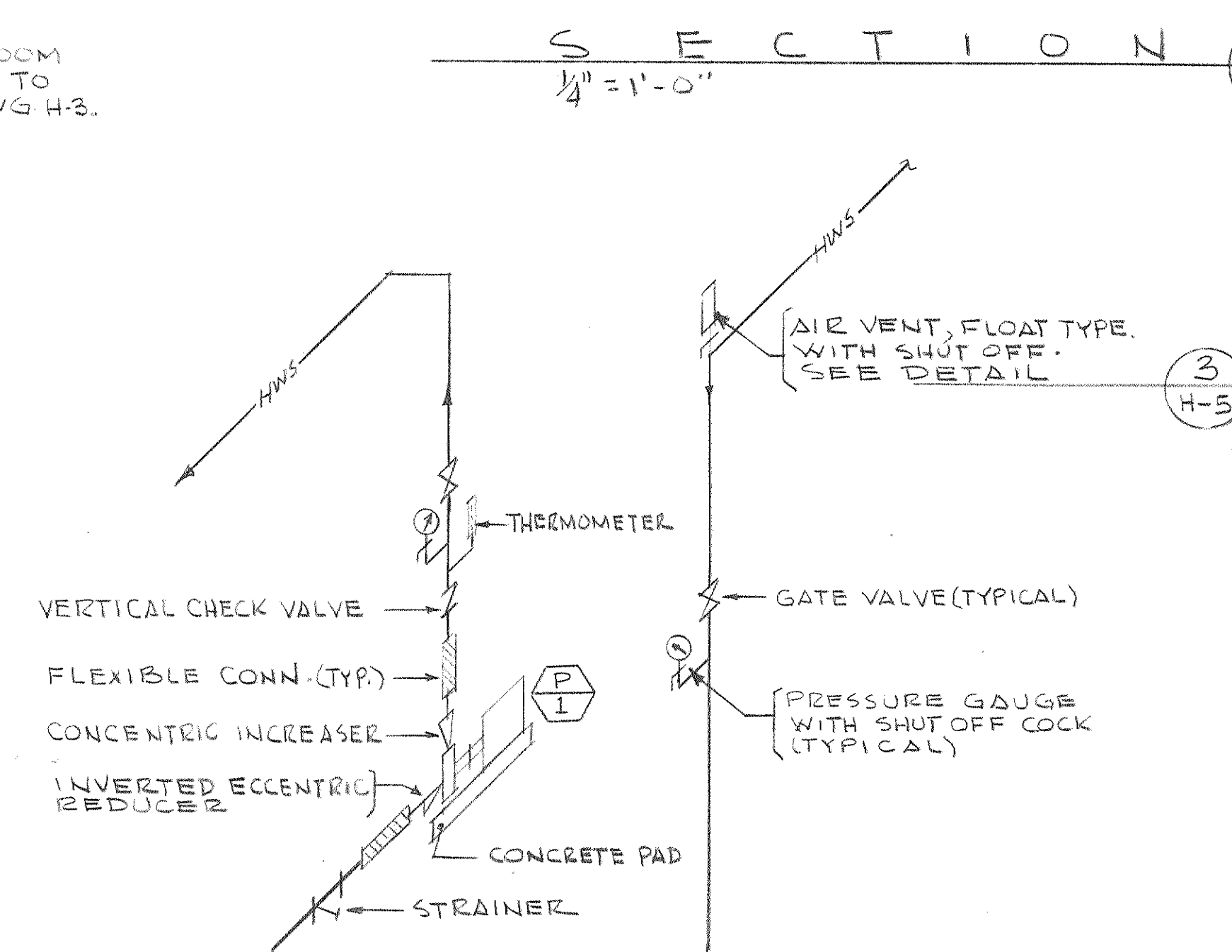


SCHEMATIC OF BOILER GAS TRAIN

NOT TO SCALE
NOTE: GAS TRAIN SHALL BE IN ACCORDANCE WITH INDUSTRIAL RISK INSURORS REQUIREMENTS.

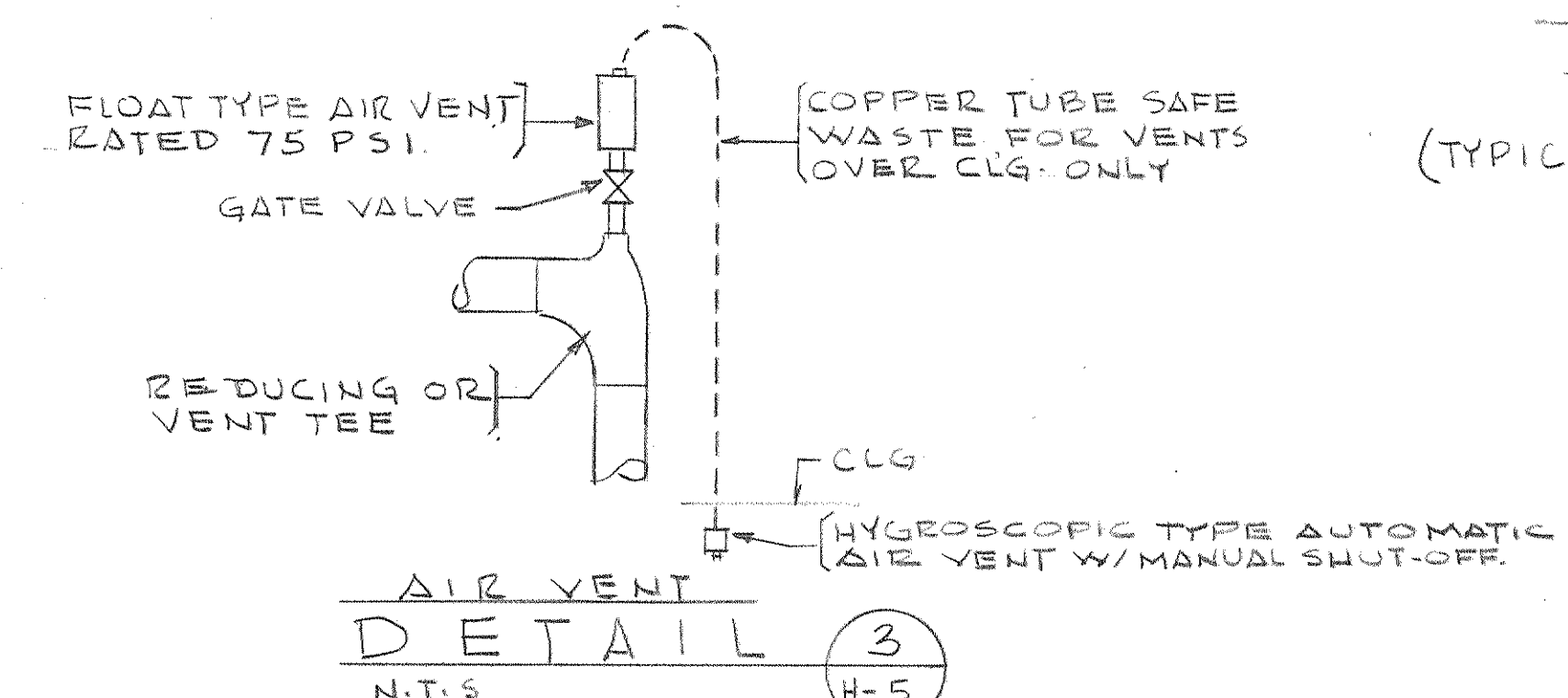


MECH. EQUIP. ROOM GRILLE
DETAIL 4
NOT TO SCALE
(TYPICAL FOR G.R.V., EF-9, & SF-1)

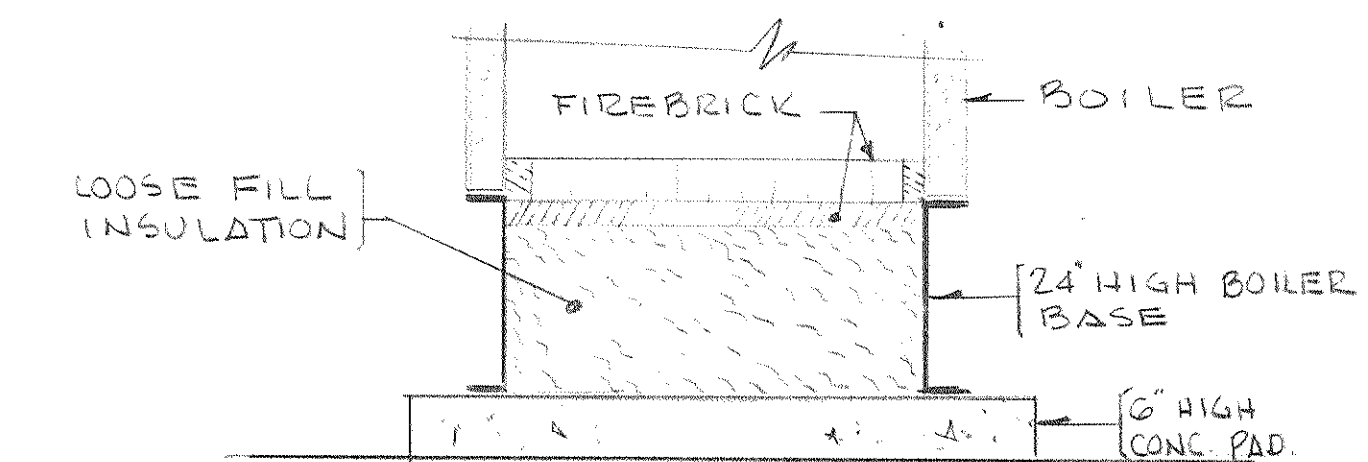


BASE MOUNTED PUMP

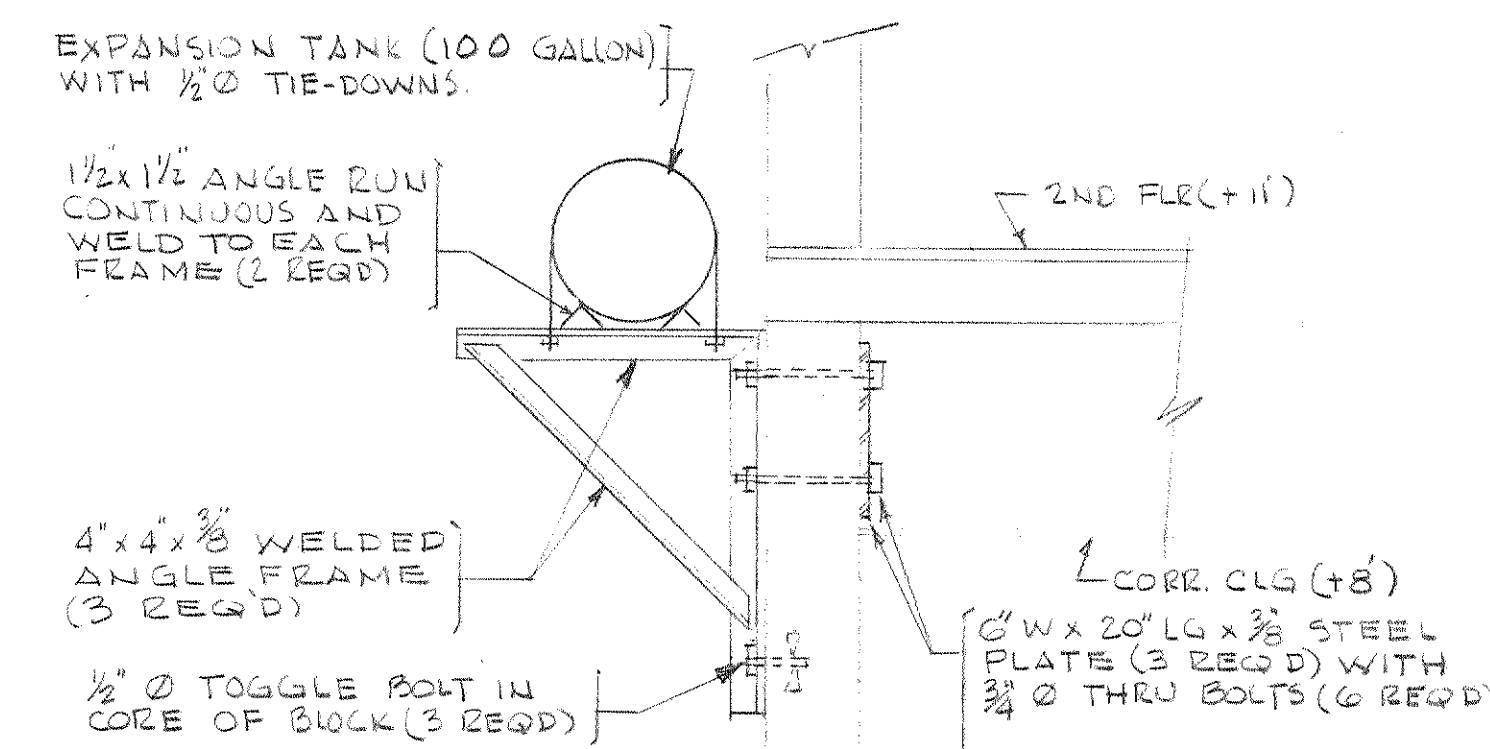
DETAIL 2
N.T.S.



AIR VENT
DETAIL 3
N.T.S.



BOILER BASE
DETAIL 5
1/2" = 1'-0"



EXPANSION TANK MOUNTING

DETAIL 6
1/2" = 1'-0"

DESCRIPTION	DESCRIPTION
AS BUILT REVISIONS	
SUBMITTED <i>Gerald F. DeMarco</i>	ARCHITECT
SUBMITTED <i>William J. Burkavage</i>	ENGINEER
APPROVED <i>William J. Burkavage</i>	DEPARTMENT OF TRANSPORTATION
APPROVED	
CHECKED BY DEPARTMENT OF GENERAL SERVICES	
ARCH. STRUCT. H.V.A.C. PLBS. ELECT. MISC.	
COMMONWEALTH OF PENNSYLVANIA DEPARTMENT OF GENERAL SERVICES HARRISBURG PENNSYLVANIA	
PROJECT NO. D.G.S. 960-10	
EMERGENCY EQUIPMENT & MAINTENANCE BUILDING HARRISBURG INTERNATIONAL AIRPORT MIDDLETOWN DAUPHIN COUNTY PENNSYLVANIA	
GERALD F. DE MARCO REGISTERED ARCHITECT 276 EAST GROVE AVE. CLARKS-SUMMIT, PENNA.	BURKAVAGE-EVANS ASSOCIATES CONSULTING ENGINEERS 709 NORTH STATE ST. CLARKS-SUMMIT, PENNA.
HVAC - MECH. EQUIP. ROOM, PLAN & DETAILS	
DRAWN BY PJG	DATE 8-11-80
CHECKED BY JCH	SCALE NOTED
DRAWING NO. H-5	