

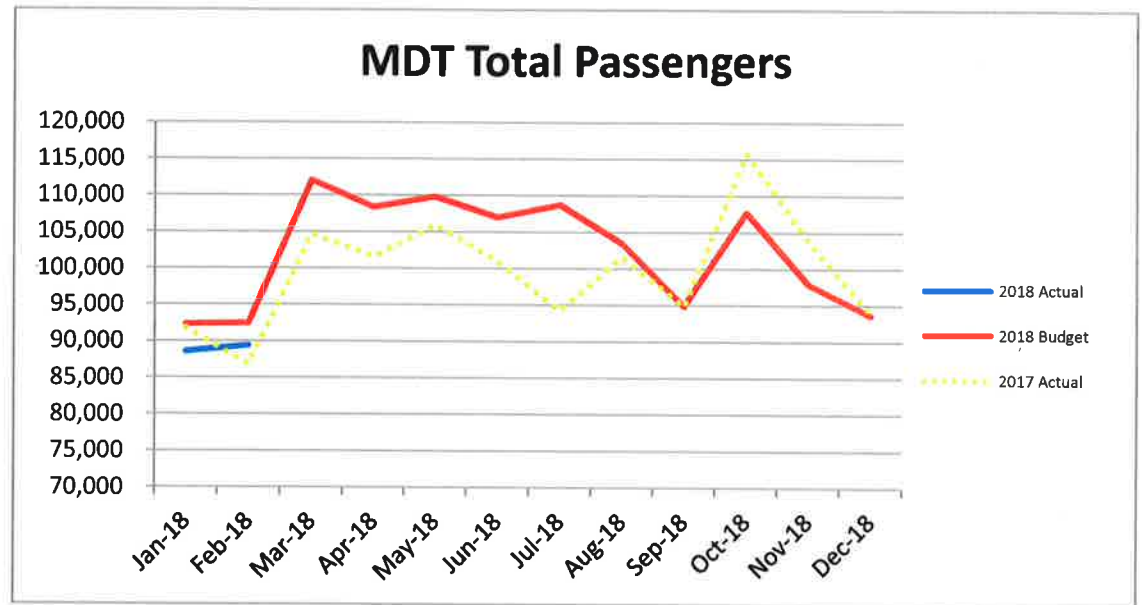
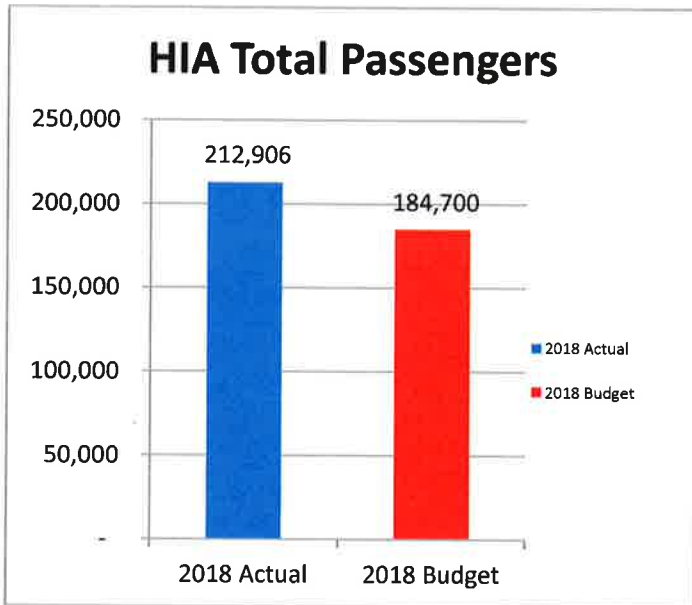
**Harrisburg International Airport Passenger Statistics
February-18**

Harrisburg Int'l Airport	Feb-18 Actual	Feb-18 Budget	% Change
Enplaned Passengers	45,470	46,212	-1.6%
Total Passengers	89,474	92,425	-3.2%
Departing Load Factor	80.4%	78.8%	1.6%
Departing Seat Capacity	56,535	58,611	-3.5%
Total Cargo Tonnage	4,174		
Commercial Landed Weight	85,197,108	83,984,050	1.4%

2018 Actual YTD	2018 Budget YTD	% Change
108,263	92,350	17.2%
212,906	184,700	15.3%
78.1%	77.8%	0.3%
138,659	118,692	16.8%
12,989		
232,111,607	171,498,605	35.3%

2018 Actual YTD	2017 Actual YTD	% Change
108,263	142,024	-23.8%
212,906	283,248	-24.8%
78.1%	84.1%	-6.0%
138,659	168,870	-17.9%
12,989	12,007	8.2%
232,111,607	252,708,898	-8.2%

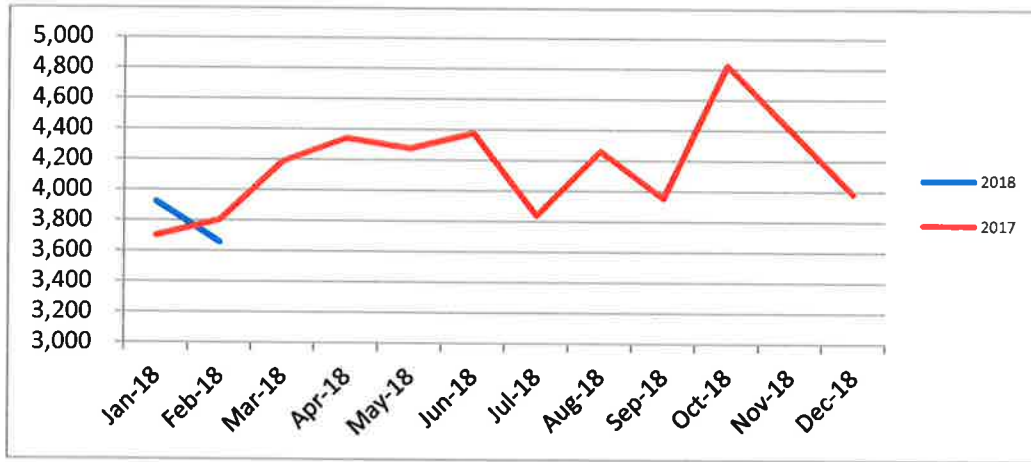
CY 2018 Projection
613,908
1,227,816
80.6%
761,788
1,126,266,906



**MDT and CXY Operations
February-18**

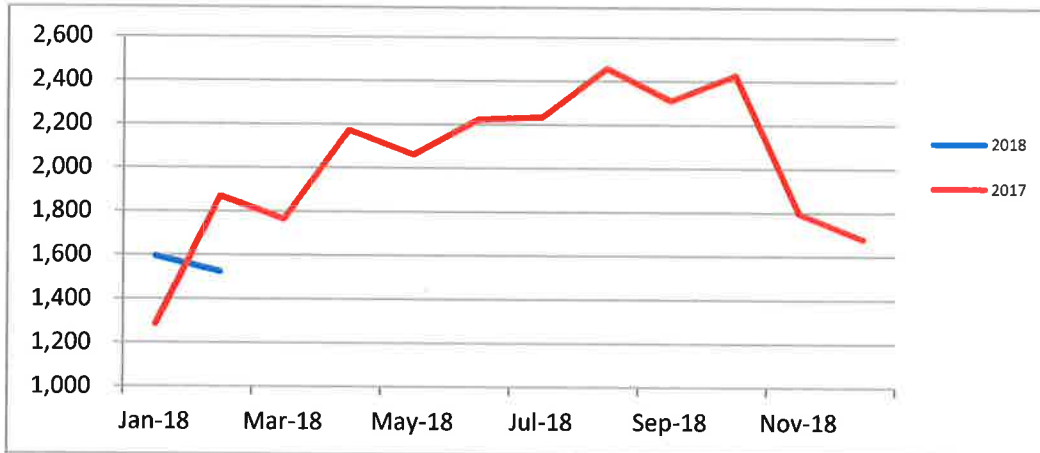
MDT Operations	Feb-18	Feb-17	Change
Commercial Air Carriers	2,213	2,125	4.1%
General Aviation	889	899	-1.1%
Military	558	781	-28.6%
Total MDT operations	3,660	3,805	-3.8%

2018 YTD	2017 YTD	Change
4,629	4,418	4.8%
1,856	1,671	11.1%
1,100	1,418	-22.4%
7,585	7,507	1.0%



CXY Operations	Feb-18	Feb-17	Change
General Aviation	1,375	1,508	-8.8%
Military	118	299	-60.5%
Air Taxi	32	62	-48.4%
Total CXY Operations	1,525	1,869	-18.4%

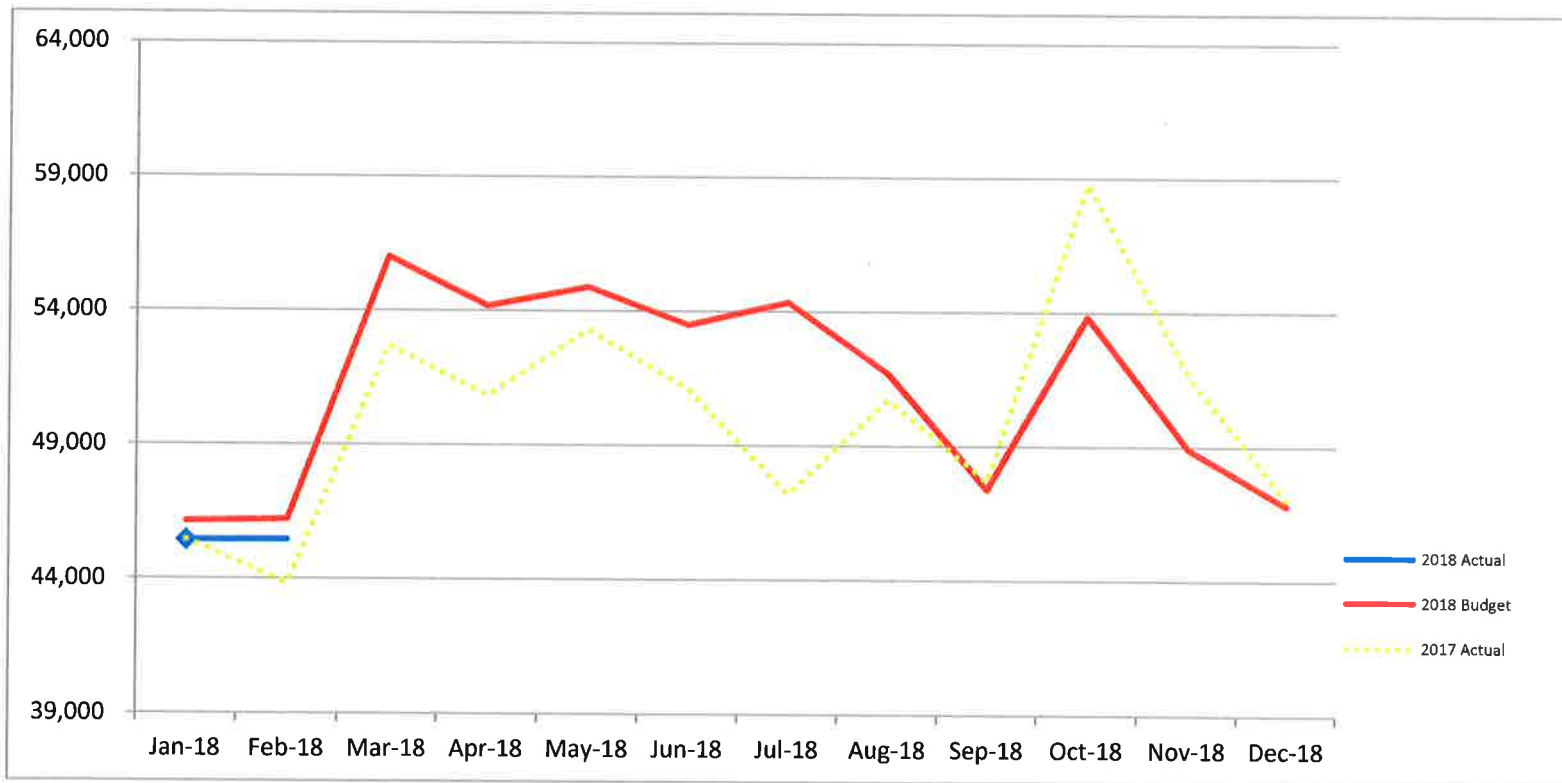
2018 YTD	2017 YTD	Change
2,782	2,596	7.2%
264	455	-42.0%
75	101	-25.7%
3,121	3,152	-1.0%





Passenger Enplanement Report February-18

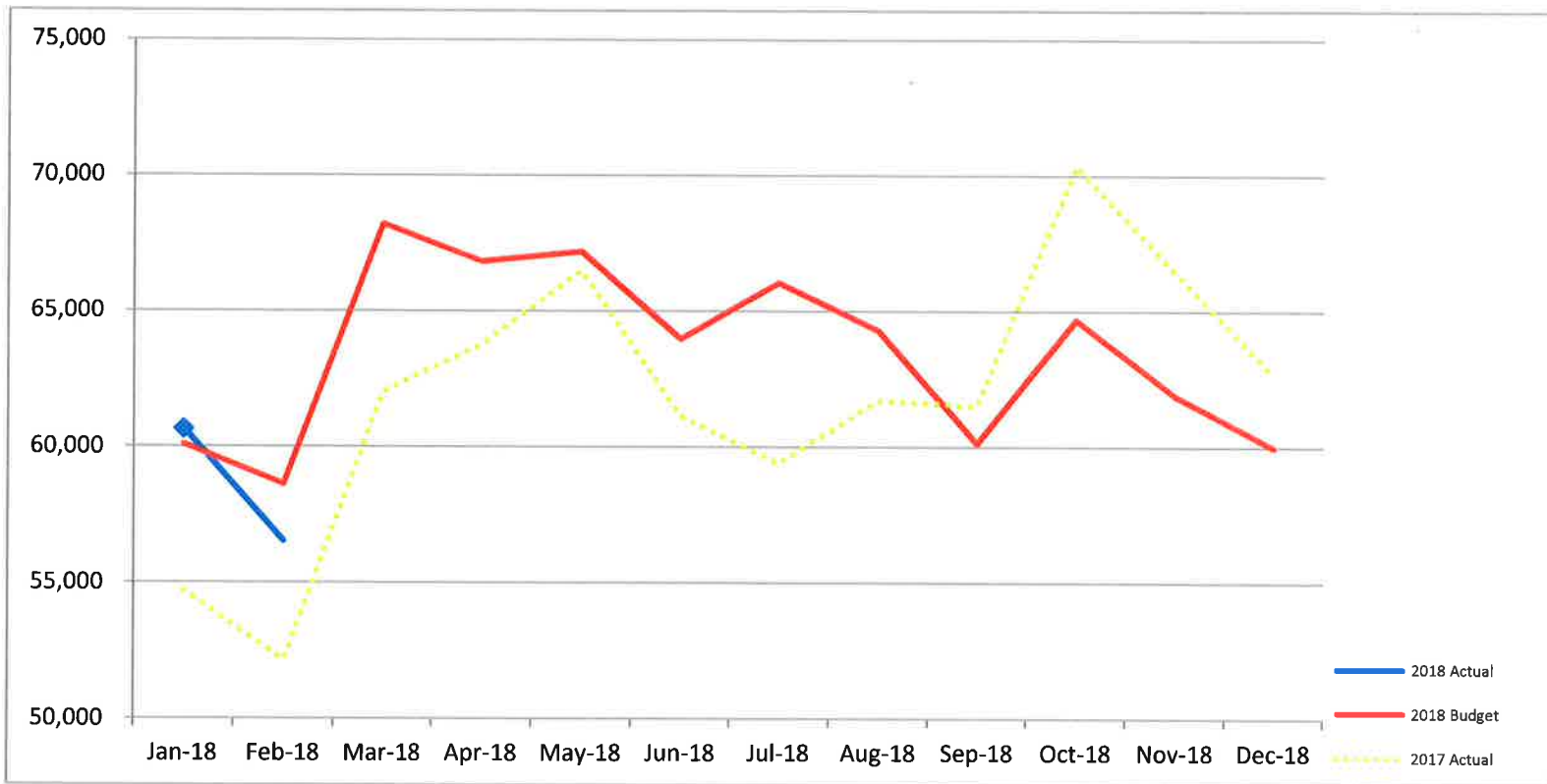
Enplaned	Actual	Budget	% Diff	Actual	Budget	% Diff	Actual	% Diff	Budget	Working	% Diff
	Feb.	Feb.		YTD 2018	YTD 2018		YTD 2017		CY 2018	Projection	
AA	19,811	20,059	-1.2%	39,703	40,801	-2.7%	59,794	-33.6%	258,241	256,809	-0.6%
DL	10,814	10,429	3.7%	21,383	21,065	1.5%	39,147	-45.4%	144,867	152,220	5.1%
UA	8,080	9,321	-13.3%	25,823	18,261	41.4%	24,762	4.3%	127,587	123,117	-3.5%
G4	6,244	5,672	10.1%	19,417	10,772	80.3%	17,038	14.0%	74,217	75,386	1.6%
AC	477	654	-27.0%	1,478	1,299	13.7%	1,251	18.1%	7,998	16,760	109.5%
SO	44	78	-43.6%	78	152	-48.6%	32	143.8%	997	11,307	#####
Total	45,470	46,212	-1.6%	107,882	92,350	16.8%	142,024	-24.0%	613,908	635,598	3.5%





Airline Departing Seat Report February-18

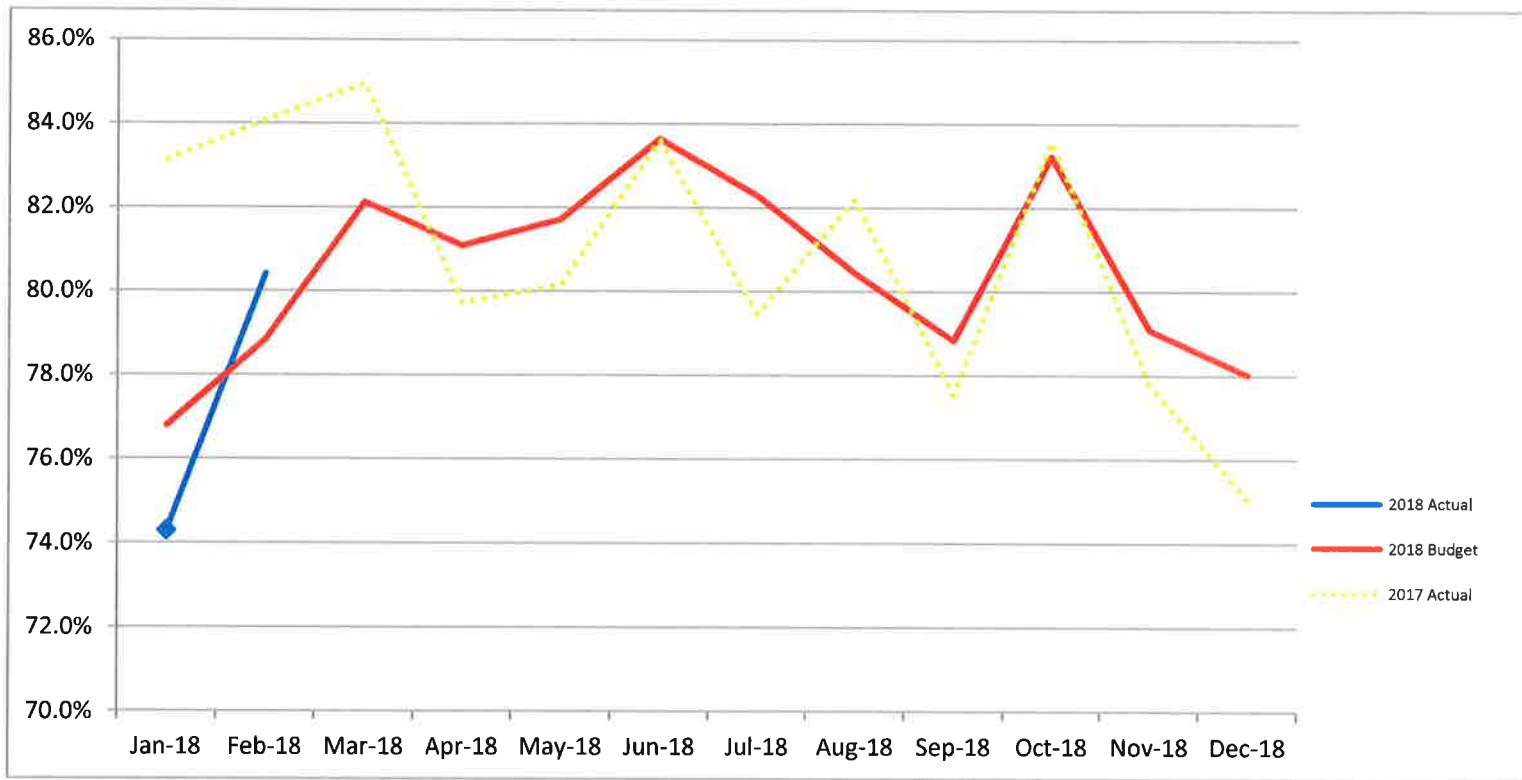
Dep. Seats	Actual			Actual			Actual		Working		
	Feb.	Budget Feb.	% Diff	YTD 2018	Budget YTD 2018	% Diff	YTD 2017	% Diff	Budget CY 2018	Projection CY 2018	% Diff
AA	24,292	25,256	-3.8%	50,870	52,221	-2.6%	72,270	-29.6%	322,775	Total	#####
DL	13,301	12,850	3.5%	27,278	26,033	4.8%	45,808	-40.5%	172,664	319,728	85.2%
UA	10,858	12,574	-13.6%	34,882	24,990	39.6%	28,722	21.4%	162,914	182,410	12.0%
G4	6,724	6,442	4.4%	21,219	12,389	71.3%	19,508	8.8%	86,931	157,600	81.3%
AC	1,136	1,334	-14.8%	3,946	2,738	44.1%	2,466	60.0%	14,531	88,322	507.8%
SO	224	156	43.6%	464	320	45.1%	96	383.3%	1,973	19,165	871.1%
Total	56,535	58,611	-3.5%	138,659	118,692	16.8%	168,870	-17.9%	761,788	767,226	0.7%





Airline Departing Load Factor Report February-18

Dep. LF	Actual	Budget	% Diff	Actual	Budget	% Diff	Actual	% Diff	Working	Budget	Projection	% Diff
	Feb.	Feb.		YTD 2018	YTD 2018		YTD 2017		CY 2018	CY 2018		
AA	81.6%	79.4%	2.1%	78.0%	78.1%	-0.1%	82.7%	-4.7%	80.0%	#VALUE!	#####	
DL	81.3%	81.2%	0.1%	78.4%	80.9%	-2.5%	85.5%	-7.1%	83.9%	47.6%	-36.3%	
UA	74.4%	74.1%	0.3%	74.0%	73.1%	1.0%	86.2%	-12.2%	78.3%	67.5%	-10.8%	
G4	92.9%	88.1%	4.8%	91.5%	86.9%	4.6%	87.3%	4.2%	85.4%	47.8%	-37.5%	
AC	42.0%	49.0%	-7.0%	37.5%	47.5%	-10.0%	50.7%	-13.3%	55.0%	19.0%	-36.1%	
SO	19.6%	50.0%	-30.4%	16.8%	47.4%	-30.6%	33.3%	-16.5%	50.5%	59.0%	8.5%	
Total	80.4%	78.8%	1.6%	77.8%	77.8%	0.0%	84.1%	-6.3%	80.6%	82.8%	2.3%	





Airline Landed Weight Report February-18

Landed Weight	Actual			Actual			Actual		Working		
	Feb.	Budget Feb.	% Diff	YTD 2018	Budget YTD 2018	% Diff	YTD 2017	% Diff	Budget CY 2018	Projection CY 2018	% Diff
AA	23,886,990	24,709,523	-3.3%	50,029,890	51,154,838	-2.2%	69,890,200	-28.4%	307,829,974	-	#####
DL	13,573,000	12,284,194	10.5%	27,948,900	24,980,803	11.9%	44,776,500	-37.6%	166,578,814	-	#####
UA	10,620,323	12,006,170	-11.5%	34,100,241	23,683,844	44.0%	27,427,539	24.3%	154,226,193	Total	#####
G4	5,412,195	5,234,974	3.4%	17,173,516	10,054,754	70.8%	16,145,024	6.4%	69,945,921	310,583,723	#####
AC	1,051,200	1,230,060	-14.5%	3,654,200	2,524,860	44.7%	2,274,200	60.7%	13,401,180	178,578,766	#####
SO	238,000	165,750	43.6%	493,000	339,788	45.1%	102,000	383.3%	2,096,738	148,257,726	#####
Charters	-	-	-	431,281	-	100.0%	2,714,481	-84.1%	-	-	-
Diversions	782,600	-	-	2,082,300	-	100.0%	4,714,914	-55.8%	-	-	-
Cargo	29,632,800	28,353,380	4.5%	96,198,279	58,759,720	63.7%	84,664,040	13.6%	412,188,087	71,790,376	-82.6%
Total	85,197,108	83,984,050	1.4%	232,111,607	171,498,605	35.3%	252,708,898	-8.2%	1,126,266,906	709,210,591	-37.0%

