

**Passenger and Operational Statistics
June-17**



Harrisburg International Airport	Jun-17	Jun-16	% Change	2017 YTD	2016 YTD	% Change
Enplaned Passengers	51,113	57,209	(10.7)	297,298	288,204	3.2
Total Passengers	101,005	111,429	(9.4)	591,775	572,263	3.4
Departing Load Factor	83.6	87.1	(3.5)	79.9	80.6	(0.7)
Departing Seat Capacity	61,135	65,675	(6.9)	360,480	357,420	0.9
Total Cargo Tonnage	4,500.3	4,506.7	(0.1)	24,497	24,955	(1.8)
Commercial Landed Weight	89,494,055	91,182,766	(1.9)	523,610,446	501,863,206	4.3

MDT Operations	Jun-17	Jun-16	% Change	2017 YTD	2016 YTD	% Change
Commercial Air Carriers	2,552	2,566	(0.5)	14,285	14,539	(1.7)
General Aviation	1,266	990	27.9	6,243	5,047	23.7
Military	559	807	(30.7)	4,164	4,469	(6.8)
Total MDT operations	4,377	4,363	0.3	24,692	24,055	2.6

CXY Operations	Jun-17	Jun-16	% Change	2017 YTD	2016 YTD	% Change
General Aviation	2,085	1,901	9.7	9,752	8,676	12.4
Military	86	289	(70.2)	1,287	1,622	(20.7)
Air Taxi	50	46	8.7	330	175	88.6
Total CXY Operations	2,221	2,236	(0.7)	11,369	10,473	8.6

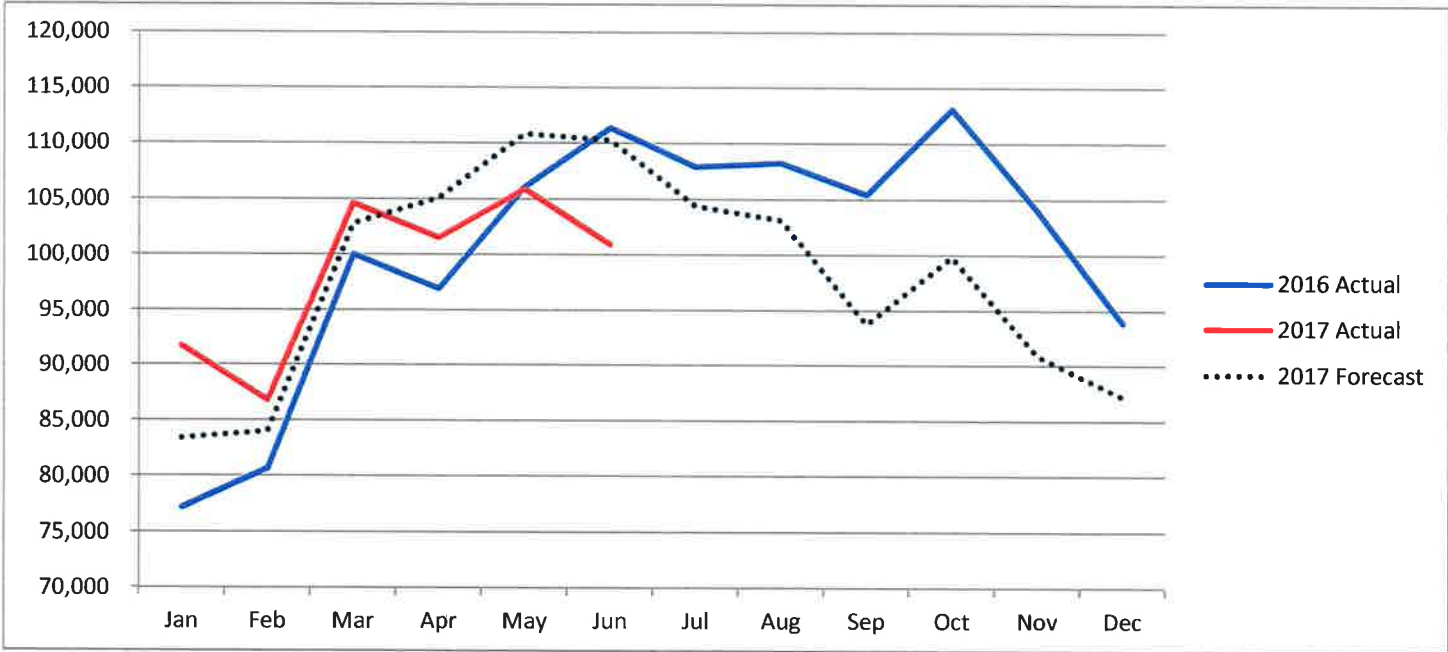


MDT Total Passengers

2017	Jan-17	Feb-17	Mar-17	Apr-17	May-17	Jun-17	Jul-17	Aug-17	Sep-17	Oct-17	Nov-17	Dec-17	2017 Total
American	39,656	37,584	41,971	41,010	42,502	40,286	0	0	0	0	0	0	243,009
Delta	23,738	24,608	29,673	26,670	28,151	28,324	0	0	0	0	0	0	161,164
United	14,797	13,511	19,255	20,203	21,565	18,253	0	0	0	0	0	0	107,584
Allegiant	10,498	10,266	12,894	12,742	12,592	12,297	0	0	0	0	0	0	71,289
Air Canada	831	841	868	915	1,113	1,845	0	0	0	0	0	0	6,413
Southern	29	13	26	29	30	0	0	0	0	0	0	0	127
Charters	2,189	0	0	0	0	0	0	0	0	0	0	0	2,189
Total	91,738	86,823	104,687	101,569	105,953	101,005	0	0	0	0	0	0	591,775
vs. 2016	18.8%	7.6%	4.6%	4.7%	-0.2%	-9.4%							

2016	Jan-16	Feb-16	Mar-16	Apr-16	May-16	Jun-16	Jul-16	Aug-16	Sep-16	Oct-16	Nov-16	Dec-16	2016 Total
American	32,485	33,796	38,794	37,917	42,004	43,374	42,697	44,212	42,602	43,423	40,764	37,052	479,120
Delta	20,748	21,275	27,731	27,772	27,462	28,123	25,645	27,569	27,882	33,569	28,607	23,292	319,675
United	14,682	15,069	17,057	19,322	23,219	24,363	22,371	22,835	24,164	24,626	23,176	19,194	250,078
Allegiant	8,344	9,798	15,688	10,897	12,012	14,059	15,543	12,100	9,494	10,031	10,272	10,500	138,738
Air Canada	649	769	805	961	1,360	1,510	1,687	1,579	1,347	1,307	1,083	967	14,024
Southern	0	0	0	0	0	0	0	0	0	27	188	8	3,603
Charters	283	0	0	128	90	0	0	0	0	172	0	2,930	0
Total	77,191	80,707	100,075	96,997	106,147	111,429	107,943	108,295	105,489	113,155	104,090	93,943	1,205,461

	Jan	Feb	Mar	Apr	May	Jun	Jul	Aug	Sep	Oct	Nov	Dec	Totals
2016 Actual	77,191	80,707	100,075	96,997	106,147	111,429	107,943	108,295	105,489	113,155	104,090	93,943	1,205,461
2017 Actual	91,738	86,823	104,687	101,569	105,953	101,005							591,775
2017 Forecast	83,398	84,044	102,852	105,139	110,838	110,263	104,436	103,163	93,753	99,875	90,912	87,196	1,175,869
vs. Forecast	10.0%	3.3%	1.8%	-3.4%	-4.4%	-8.4%							

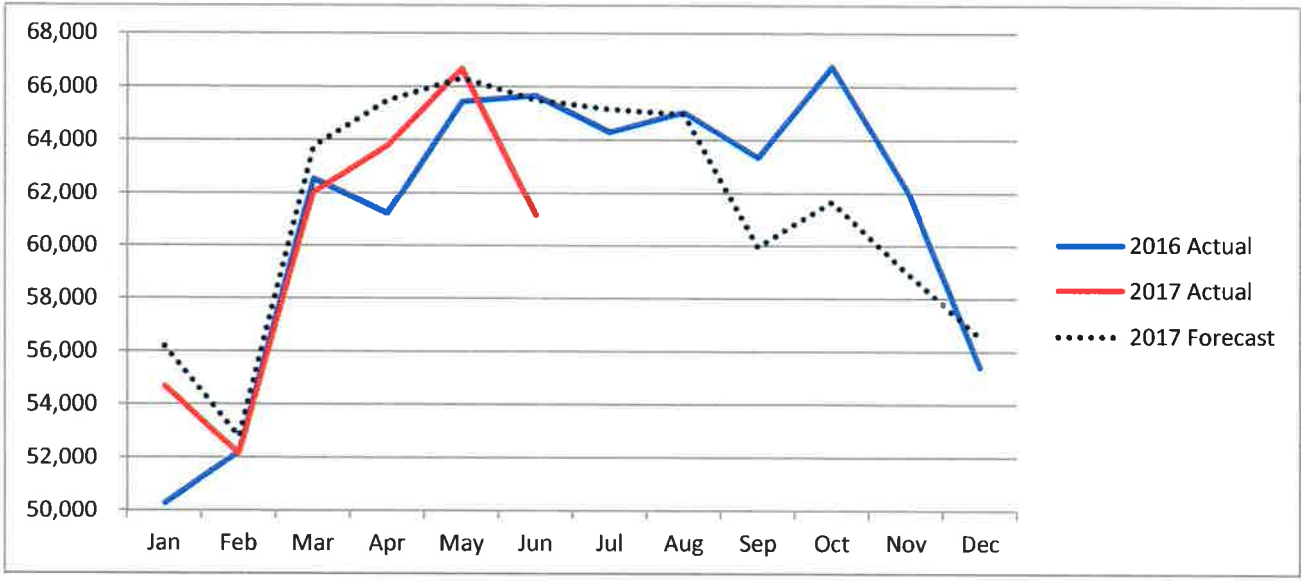


MDT Departing Seats

2017	Jan-17	Feb-17	Mar-17	Apr-17	May-17	Jun-17	Jul-17	Aug-17	Sep-17	Oct-17	Nov-17	Dec-17	2017 Total
American	24,542	22,831	24,897	26,289	27,502	25,019	0	0	0	0	0	0	151,080
Delta	13,764	14,268	17,776	16,070	16,420	15,576	0	0	0	0	0	0	93,874
United	9,361	8,516	10,845	13,143	14,277	12,011	0	0	0	0	0	0	68,153
Allegiant	6,141	5,754	7,613	7,391	7,508	7,035	0	0	0	0	0	0	41,442
Air Canada	846	756	864	828	918	1,494	0	0	0	0	0	0	5,706
Southern	45	27	36	63	54	0	0	0	0	0	0	0	225
Total	54,699	52,152	62,031	63,784	66,679	61,135	0	0	0	0	0	0	360,480
vs. 2016	8.8%	-0.1%	-0.8%	4.2%	1.9%	-6.9%							

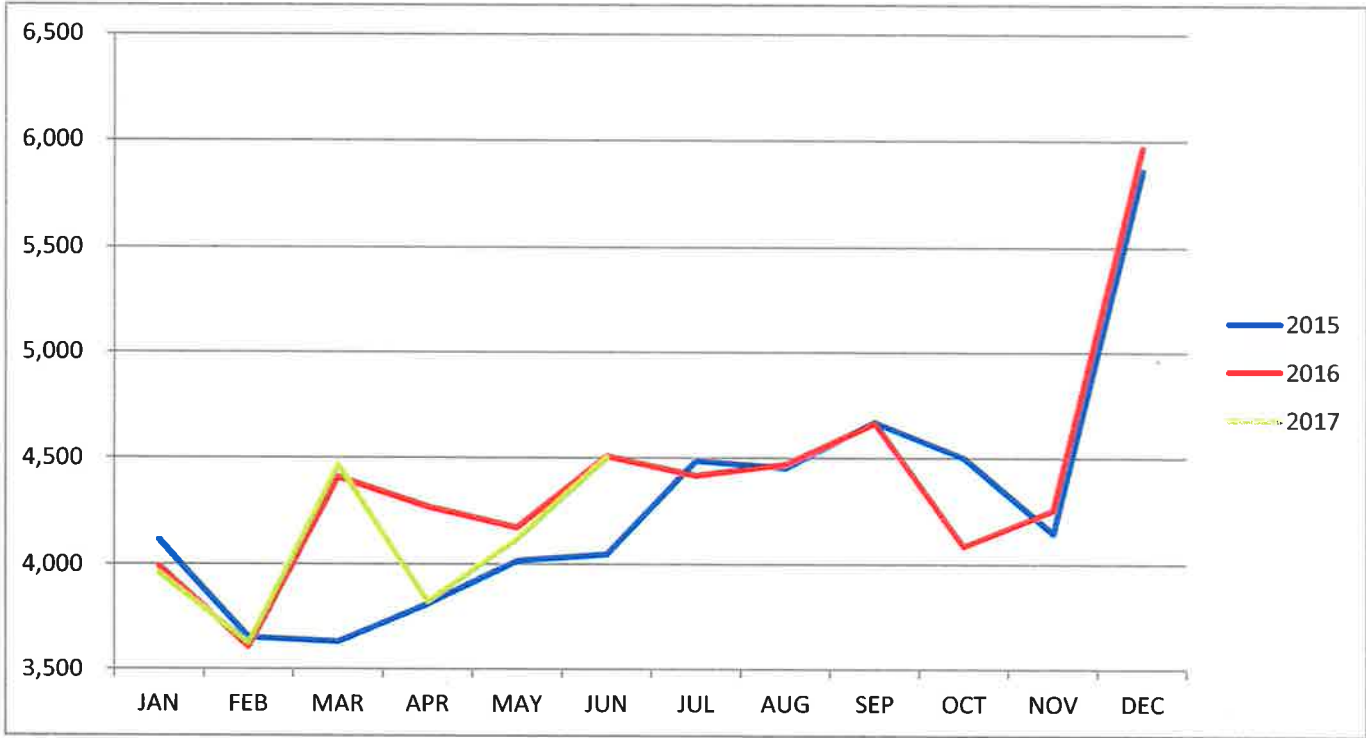
2016	Jan-16	Feb-16	Mar-16	Apr-16	May-16	Jun-16	Jul-16	Aug-16	Sep-16	Oct-16	Nov-16	Dec-16	2016 Total
American	22,034	22,497	25,515	24,854	26,164	25,180	25,443	26,325	25,858	26,345	25,261	23,751	299,227
Delta	13,023	13,489	17,012	17,241	16,370	16,793	15,592	15,941	15,871	18,728	16,295	13,027	189,382
United	9,760	10,020	10,900	12,120	14,933	14,814	13,839	14,292	15,045	14,954	13,609	11,450	155,736
Allegiant	4,758	5,444	8,332	6,163	6,904	7,844	8,331	7,424	5,577	5,665	5,842	6,398	78,682
Air Canada	702	774	792	864	1,080	1,044	1,116	1,080	1,008	1,062	900	792	11,214
Southern	0	0	0	0	0	0	0	0	0	18	297	18	333
Total	50,277	52,224	62,551	61,242	65,451	65,675	64,321	65,062	63,359	66,772	62,204	55,436	734,574

	Jan	Feb	Mar	Apr	May	Jun	Jul	Aug	Sep	Oct	Nov	Dec	Totals
2016 Actual	50,277	52,224	62,551	61,242	65,451	65,675	64,321	65,062	63,359	66,772	62,204	55,436	734,574
2017 Actual	54,699	52,152	62,031	63,784	66,679	61,135							360,480
2017 Forecast	56,189	52,788	63,758	65,503	66,346	65,505	65,178	64,981	59,968	61,676	59,024	56,557	737,474
vs. Forecast	-2.7%	-1.2%	-2.7%	-2.6%	0.5%	-6.7%							



MDT Total Cargo Tonnage

	JAN	FEB	MAR	APR	MAY	JUN	JUL	AUG	SEP	OCT	NOV	DEC	Total
2015	4,113	3,652	3,634	3,814	4,018	4,048	4,487	4,453	4,670	4,502	4,148	5,861	51,401
2016	3,992	3,607	4,408	4,268	4,173	4,507	4,415	4,469	4,663	4,085	4,253	5,966	52,807
2017	3,959	3,627	4,466	3,825	4,120	4,500							24,497



Cargo Tonnage	Jun-17	Jun-16	% Change	2017 Share	2017 YTD	2016 YTD	% Change	16 YTD Share
Federal Express	2,456.5	2,556.6	(3.9)	54.6%	13,440.1	14,111.8	(4.8)	54.9%
UPS	1,926.8	1,812.8	6.3	42.8%	10,391.5	9,985.0	4.1	42.4%
Other cargo	112.3	133.0	(15.6)	2.5%	635.8	823.0	(22.7)	2.6%
Commercial	4.7	4.3	9.7	0.1%	29.7	35.6	(16.5)	0.1%
Total	4,500.3	4,506.7	(0.1)	100.0%	24,497.1	24,955.4	(1.8)	100.0%

MDT Landed Weight

2017	Jan-17	Feb-17	Mar-17	Apr-17	May-17	Jun-17	Jul-17	Aug-17	Sep-17	Oct-17	Nov-17	Dec-17	2017 Total
American	23,700,400	22,025,400	24,164,400	25,378,950	26,612,850	24,076,700	0	0	0	0	0	0	145,958,700
Delta	13,578,000	13,959,800	17,238,700	15,841,100	16,230,100	15,404,000	0	0	0	0	0	0	92,251,700
United	8,944,302	8,086,238	10,396,999	13,010,174	14,233,410	11,716,563	0	0	0	0	0	0	66,387,686
Allegiant	5,062,470	4,769,980	6,312,574	6,060,554	6,184,080	5,853,922	0	0	0	0	0	0	34,243,580
Air Canada	780,200	697,200	796,800	763,600	846,600	1,377,800	0	0	0	0	0	0	5,262,200
Southern	42,500	25,500	34,000	59,500	51,000	0	0	0	0	0	0	0	212,500
Charters	2,714,481	0	0	0	0	536,000	0	0	0	0	0	0	3,250,481
Diversions	1,563,607	1,921,857	1,229,450	584,300	1,286,275	1,877,250	0	0	0	0	0	0	8,462,739
Cargo	28,265,600	26,397,580	30,000,860	25,885,080	28,379,920	28,651,820	0	0	0	0	0	0	167,580,860
Total	84,651,560	77,883,555	90,173,783	87,583,258	93,824,235	89,494,055	0	0	0	0	0	0	523,610,446
vs. 2016	14.3%	4.6%	3.3%	1.3%	6.1%	-1.9%							

2016	Jan-16	Feb-16	Mar-16	Apr-16	May-16	Jun-16	Jul-16	Aug-16	Sep-16	Oct-16	Nov-16	Dec-16	2016 Total
American	20,859,576	21,382,576	24,255,300	24,070,500	25,448,050	24,470,200	24,721,300	25,914,000	25,395,950	25,884,800	24,214,100	22,361,400	288,977,752
Delta	12,743,368	13,287,137	16,702,949	17,209,200	16,136,225	16,327,343	15,287,788	15,568,335	15,388,200	17,607,100	15,788,800	12,857,700	184,904,145
United	8,701,254	8,986,275	9,846,738	10,888,744	13,837,345	13,938,699	13,122,801	13,716,282	13,965,384	14,178,954	13,473,679	11,124,194	145,780,349
Allegiant	3,932,980	4,496,376	6,884,064	5,067,866	5,644,752	6,369,232	6,785,034	6,068,648	4,627,782	4,649,366	4,791,564	5,317,942	64,635,606
Air Canada	647,400	713,800	730,400	796,800	996,000	962,800	1,029,200	996,000	929,600	979,400	830,000	730,400	10,341,800
Southern	0	0	0	0	0	0	0	0	0	17,000	331,500	17,000	365,500
Charters	630,000	0	0	252,000	252,000	0	0	146,000	320,000	279,000	0	2,714,481	4,593,481
Diversions	587,797	2,469,500	770,200	1,054,998	74,950	1,449,452	3,378,711	706,650	110,000	522,057	349,000	356,450	11,829,765
Cargo	25,942,940	23,112,080	28,124,960	27,101,240	26,042,100	27,665,040	28,869,240	28,636,540	29,820,980	27,687,500	28,773,080	61,539,640	363,315,340
Total	74,045,315	74,447,744	87,314,611	86,441,348	88,431,422	91,182,766	93,194,074	91,752,455	90,557,896	91,805,177	88,551,723	117,019,207	1,074,743,738

	Jan	Feb	Mar	Apr	May	Jun	Jul	Aug	Sep	Oct	Nov	Dec	Totals
2016 Actual	74,045,315	74,447,744	87,314,611	86,441,348	88,431,422	91,182,766	93,194,074	91,752,455	90,557,896	91,805,177	88,551,723	117,019,207	1,074,743,738
2017 Actual	84,651,560	77,883,555	90,173,783	87,583,258	93,824,235	89,494,055							523,610,446
2017 Forecast	77,207,641	72,070,498	83,668,449	85,411,903	86,821,351	85,394,973	86,546,516	86,279,422	82,002,428	87,501,296	82,065,349	98,076,807	1,013,046,633
vs. Forecast	9.6%	8.1%	7.8%	2.5%	8.1%	4.8%							

