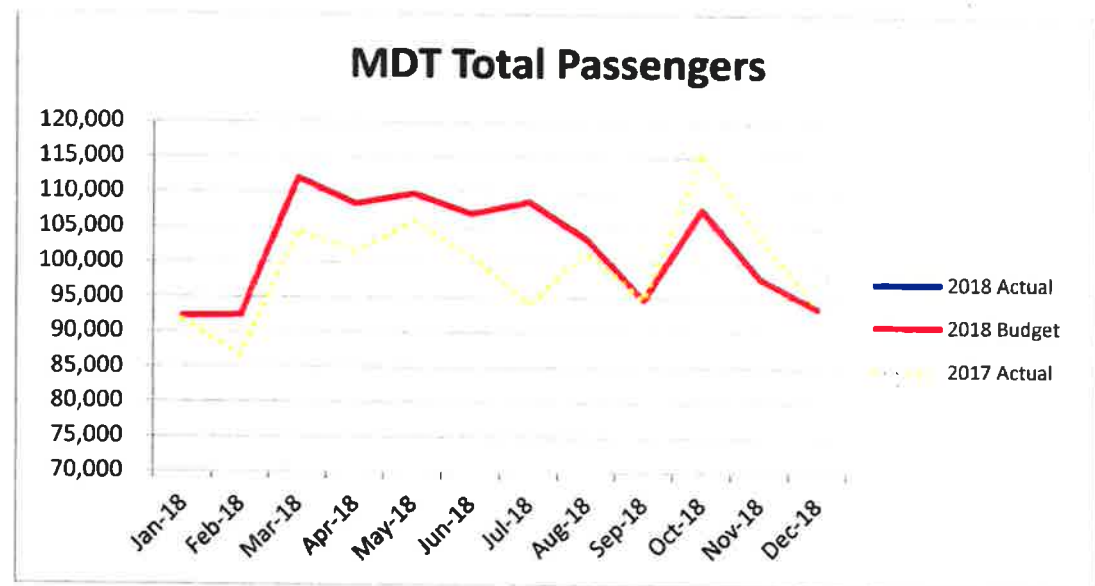
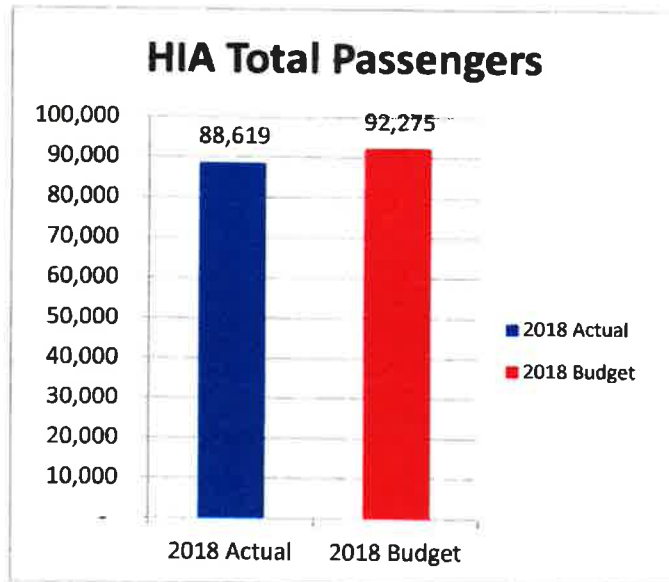


**Harrisburg International Airport Passenger Statistics
January-18**

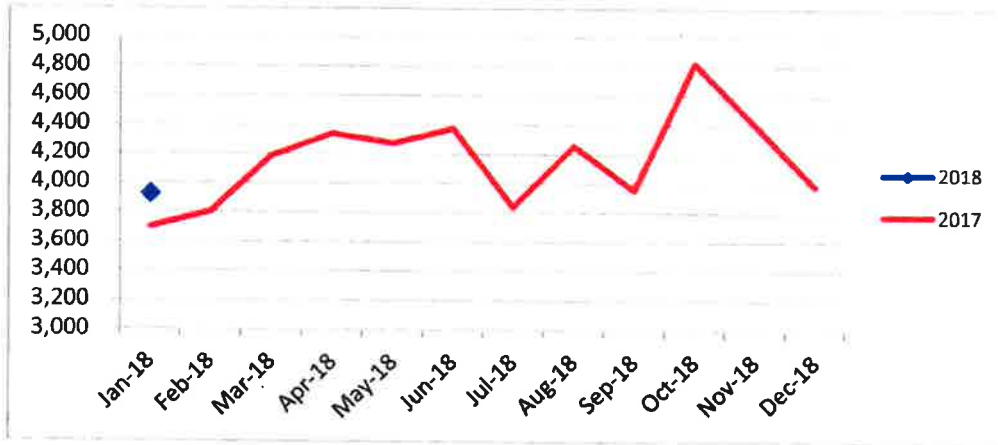
Harrisburg Int'l Airport	Jan. 2018 Actual	Jan. 2018 Budget	% Change	2018 Actual YTD	2018 Budget YTD	% Change	2018 Actual YTD	2017 Actual YTD	% Change	CY 2018 Projection
Enplaned Passengers	45,449	46,138	-1.5%	45,449	46,138	-1.5%	45,449	45,470	0.0%	613,908
Total Passengers	88,619	92,275	-4.0%	88,619	92,275	-4.0%	88,619	91,738	-3.4%	1,227,816
Departing Load Factor	74.9%	76.8%	-1.9%	74.9%	76.8%	-1.9%	74.9%	83.1%	-8.2%	80.6%
Departing Seat Capacity	60,658	60,080	1.0%	60,658	60,080	1.0%	60,658	54,694	10.9%	761,788
Total Cargo Tonnage	4,407			4,407			4,407	3,992	10.4%	
Commercial Landed Weight	94,182,902	87,514,556	7.6%	94,182,902	87,514,556	7.6%	94,182,902	84,651,560	11.3%	1,126,266,906



**MDT and CXY Operations
January-18**

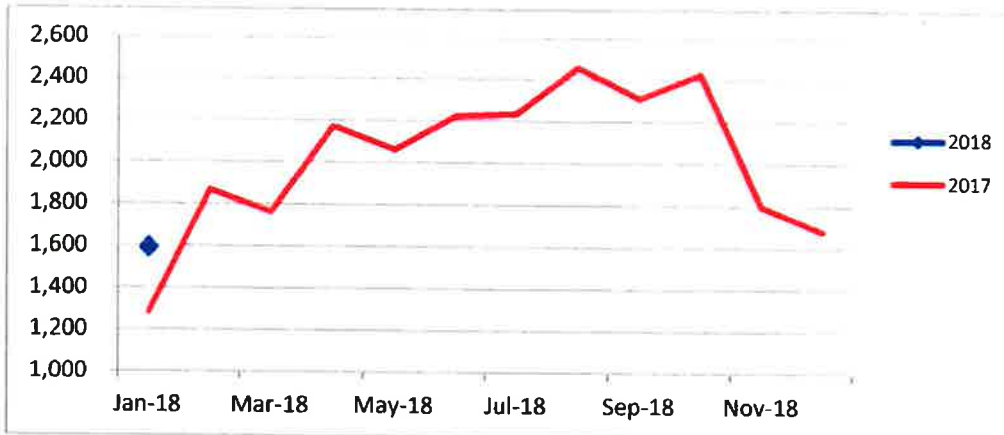
MDT Operations	Jan-18	Jan-17	Change
Commercial Air Carriers	2,416	2,293	5.4%
General Aviation	967	772	25.3%
Military	542	637	-14.9%
Total MDT operations	3,925	3,702	6.0%

2018 YTD	2017 YTD	Change
2,416	2,293	5.4%
967	772	25.3%
542	637	-14.9%
3,925	3,702	6.0%



CXY Operations	Jan-18	Jan-17	Change
General Aviation	1,407	1,088	29.3%
Military	146	156	-6.4%
Air Taxi	43	39	10.3%
Total CXY Operations	1,596	1,283	24.4%

2018 YTD	2017 YTD	Change
1,407	1,088	29.3%
146	156	-6.4%
43	39	10.3%
1,596	1,283	24.4%





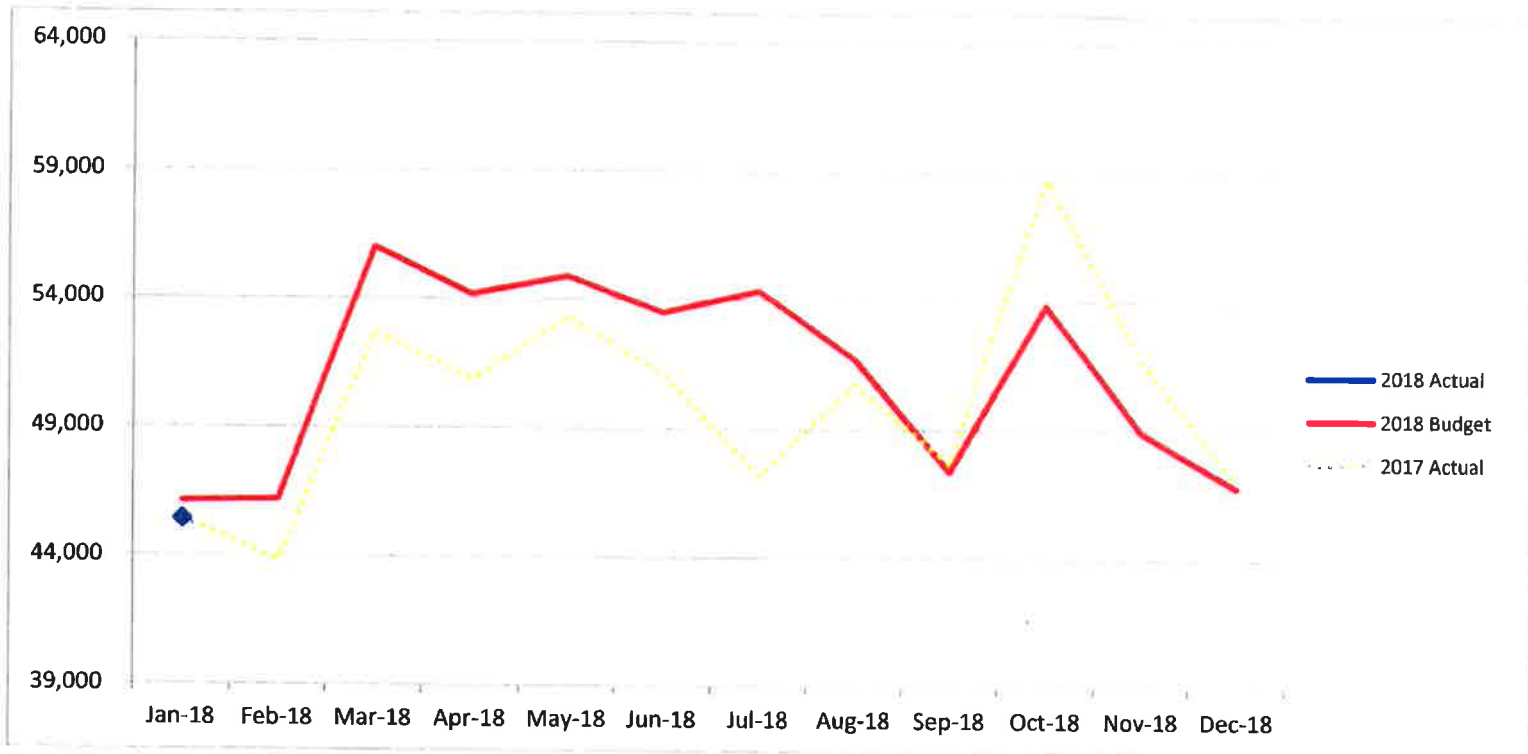
**Passenger Enplanement Report
January-18**

Enplaned	Actual Jan.	Budget Jan.	% Diff
AA	19,892	20,742	-4.1%
DL	10,569	10,636	-0.6%
UA	8,510	8,940	-4.8%
G4	5,596	5,100	9.7%
AC	467	646	-27.7%
SO	34	74	-53.9%
Total	45,068	46,138	-2.3%

Actual YTD 2018	Budget YTD 2018	% Diff
19,892	20,742	-4.1%
10,569	10,636	-0.6%
8,510	8,940	-4.8%
5,596	5,100	9.7%
467	646	-27.7%
34	74	-53.9%
45,068	46,138	-2.3%

Actual YTD 2017	% Diff
20,107	-1.1%
11,989	-11.8%
7,568	12.4%
5,410	3.4%
385	21.3%
11	209.1%
45,470	-0.9%

Budget CY 2018	Working Projection CY 2018
258,241	258,235
144,867	146,147
127,587	125,464
74,217	74,007
7,998	8,462
997	957
613,908	613,273





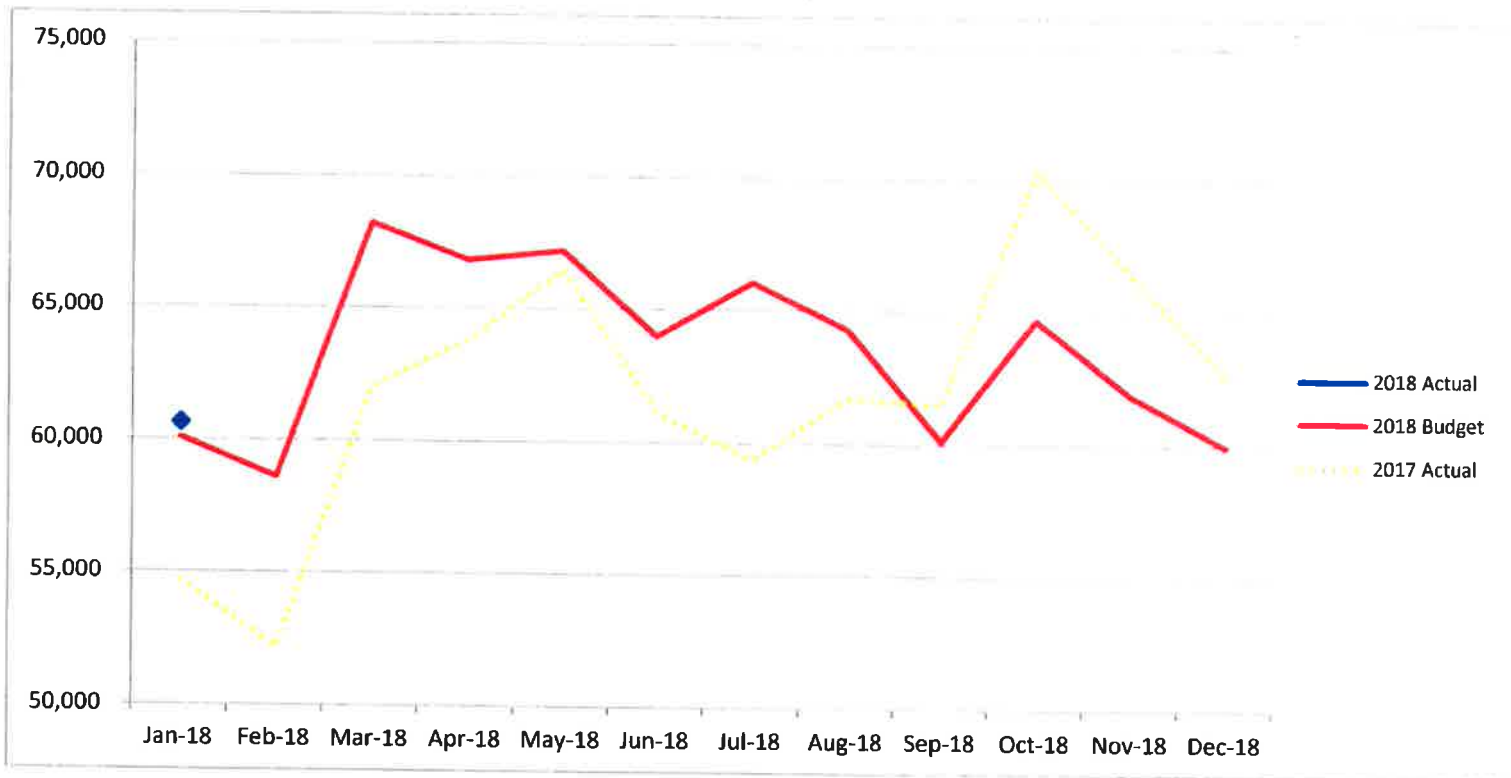
Airline Departing Seat Report January-18

Dep. Seats	Actual Jan.	Budget Jan.	% Diff
AA	26,578	26,965	-1.4%
DL	13,977	13,184	6.0%
UA	12,208	12,417	-1.7%
G4	6,187	5,948	4.0%
AC	1,468	1,404	4.6%
SO	240	164	46.5%
Total	60,658	60,080	1.0%

Actual YTD 2018	Budget YTD 2018	% Diff
26,578	26,965	-1.4%
13,977	13,184	6.0%
12,208	12,417	-1.7%
6,187	5,948	4.0%
1,468	1,404	4.6%
240	164	46.5%
60,658	60,080	1.0%

Actual YTD 2017	% Diff
24,542	8.3%
13,764	1.5%
9,361	30.4%
6,141	0.7%
846	73.5%
40	500.0%
54,694	10.9%

Budget CY 2018	Working Projection CY 2018	% Diff
322,775	322,391	-0.1%
172,664	175,179	1.5%
162,914	160,511	-1.5%
86,931	86,428	-0.6%
14,531	15,684	7.9%
1,973	2,050	3.9%
761,788	762,242	0.1%





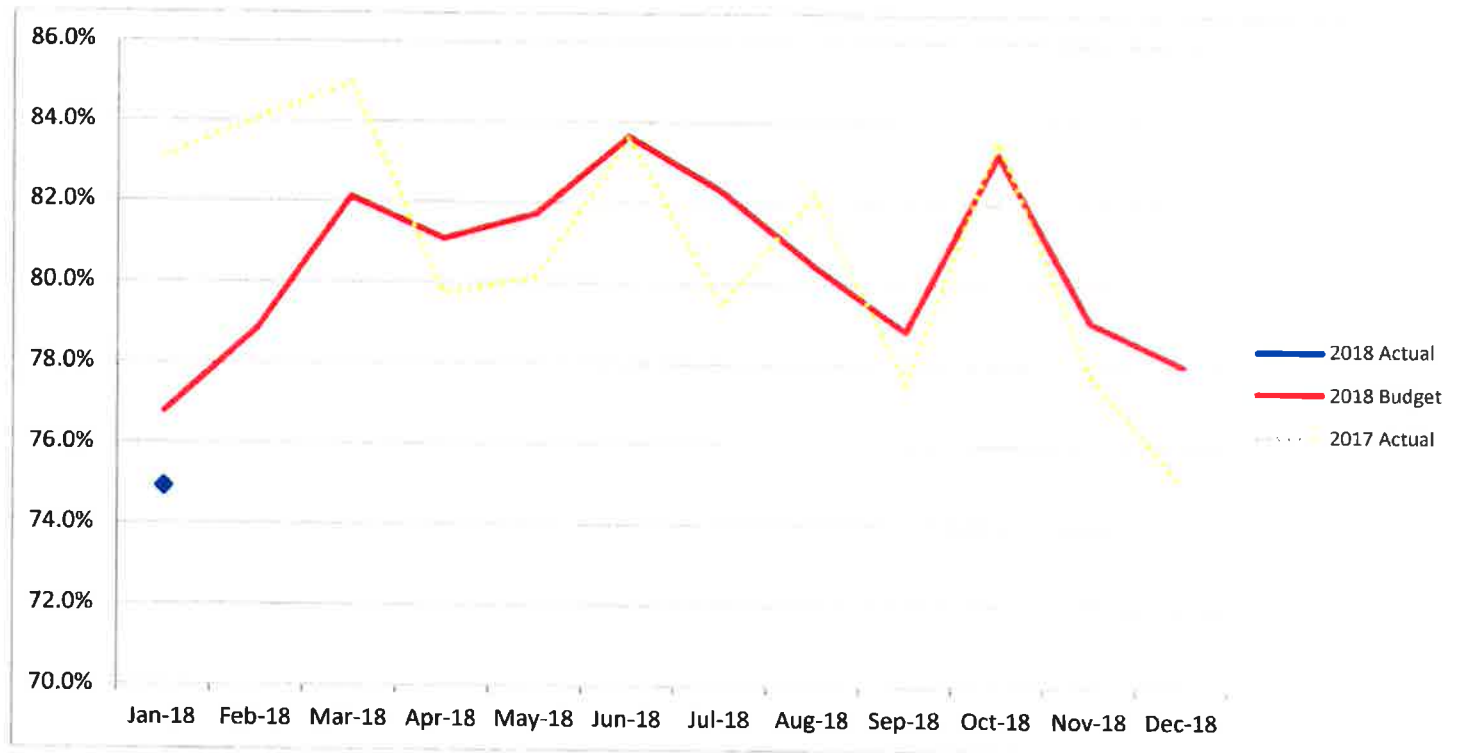
Airline Departing Load Factor Report January-18

Dep. LF	Actual	Budget	% Diff
	Jan.	Jan.	
AA	74.8%	76.9%	-2.1%
DL	75.6%	80.7%	-5.1%
UA	69.7%	72.0%	-2.3%
G4	90.4%	85.8%	4.7%
AC	31.8%	46.0%	-14.2%
SO	14.2%	45.0%	-30.8%
Total	74.3%	76.8%	-2.5%

Actual	Budget	% Diff
74.8%	76.9%	-2.1%
75.6%	80.7%	-5.1%
69.7%	72.0%	-2.3%
90.4%	85.8%	4.7%
31.8%	46.0%	-14.2%
14.2%	45.0%	-30.8%
74.3%	76.8%	-2.5%

Actual	% Diff
81.9%	-7.1%
87.1%	-11.5%
80.8%	-11.1%
88.1%	2.4%
45.5%	-13.7%
27.5%	-13.3%
83.1%	-8.8%

Budget	Working	% Diff
CY 2018	CY 2018	
80.0%	80.1%	0.1%
83.9%	83.4%	-0.5%
78.3%	78.2%	-0.2%
85.4%	85.6%	0.3%
55.0%	54.0%	-1.1%
50.5%	46.7%	-3.8%
80.6%	80.5%	-0.1%





Airline Landed Weight Report January-18

Landed Weight	Actual	Budget	% Diff	Actual	Budget	% Diff	Actual	% Diff	Budget	Working	% Diff
	Jan.	Jan.		YTD 2018	YTD 2018		YTD 2017		CY 2018	Projection	
AA	26,142,900	26,445,315	-1.1%	26,142,900	26,445,315	-1.1%	23,700,400	10.3%	307,829,974	311,292,814	1.1%
DL	14,375,900	12,696,609	13.2%	14,375,900	12,696,609	13.2%	13,578,000	5.9%	166,578,814	169,582,997	1.8%
UA	11,922,710	11,677,674	2.1%	11,922,710	11,677,674	2.1%	8,944,302	33.3%	154,226,193	152,048,027	-1.4%
G4	4,975,331	4,819,780	3.2%	4,975,331	4,819,780	3.2%	5,062,470	-1.7%	69,945,921	70,096,864	0.2%
AC	1,363,600	1,294,800	5.3%	1,363,600	1,294,800	5.3%	780,200	74.8%	13,401,180	14,473,450	8.0%
SO	255,000	174,038	46.5%	255,000	174,038	46.5%	42,500	500.0%	2,096,738	2,177,700	3.9%
Charters	431,281	-		431,281	-	100.0%	2,714,481	-84.1%	-	-	
Diversions	1,157,500	-		1,157,500	-	100.0%	1,563,607	-26.0%	-	-	
Cargo	33,558,680	30,406,340	10.4%	33,558,680	30,406,340	10.4%	28,265,600	18.7%	412,188,087	415,340,427	0.8%
Total	94,182,902	87,514,556	7.6%	94,182,902	87,514,556	7.6%	84,651,560	11.3%	1,126,266,906	1,135,012,279	0.8%

