

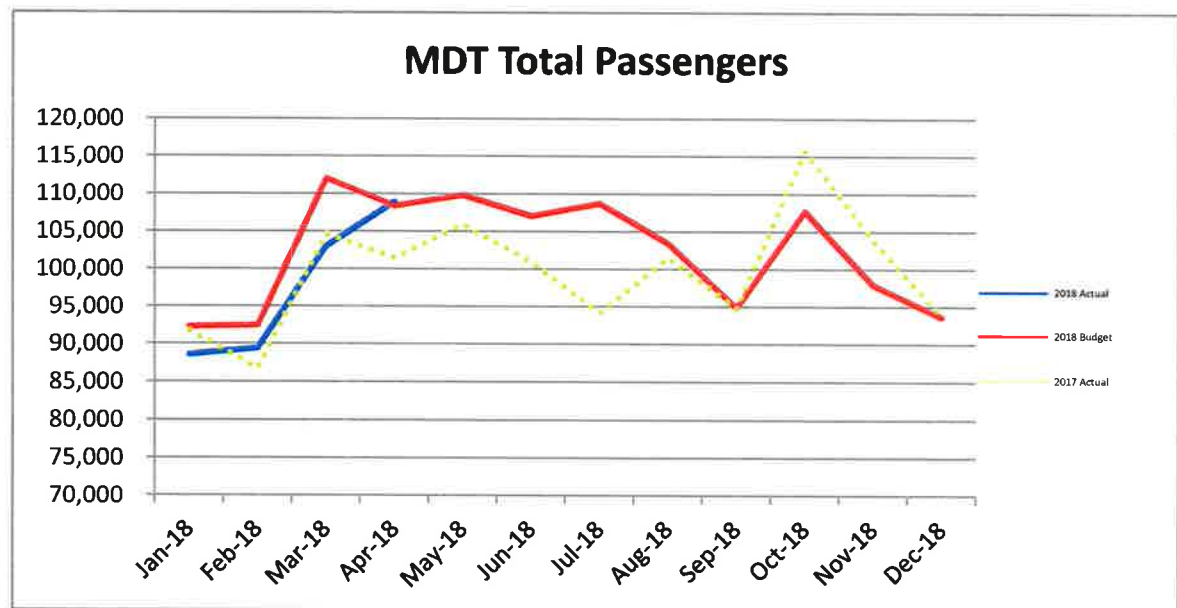
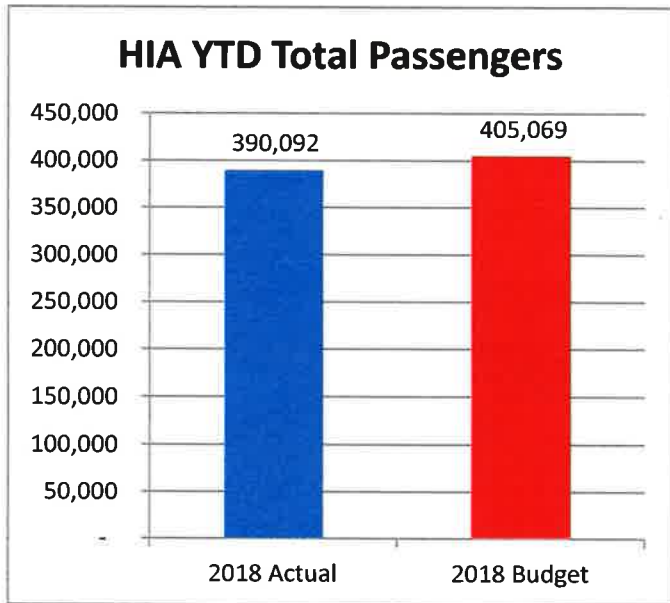
**Harrisburg International Airport Passenger Statistics
April-18**

Harrisburg Int'l Airport	Apr-18 Actual	Apr-18 Budget	% Change
Departures	925	963	-4.0%
Enplaned Passengers	54,122	54,175	-0.1%
Total Passengers	108,924	108,351	0.5%
Departing Load Factor	81.1%	81.1%	0.0%
Departing Seat Capacity	66,761	66,811	-0.1%
Total Cargo Tonnage	4,123		
Landed Weight	98,784,349	94,274,010	4.8%

2018 Actual YTD	2018 Budget YTD	% Change
3,508	3,682	-4.7%
196,405	202,535	-3.0%
390,092	405,069	-3.7%
80.0%	79.8%	0.1%
246,779	253,709	-2.7%
17,148		
372,729,622	360,689,292	3.3%

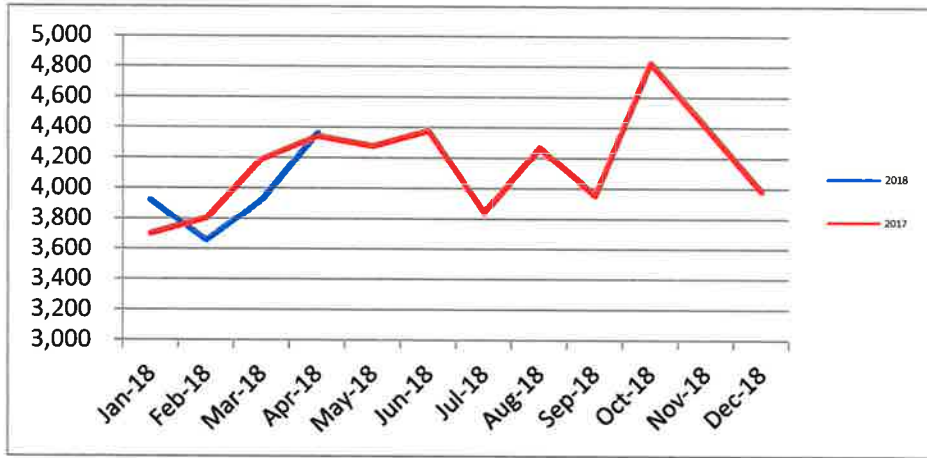
2018 Actual YTD	2017 Actual YTD	% Change
3,508	3,339	5.1%
196,405	192,876	1.8%
390,092	384,817	1.4%
80.0%	82.9%	-2.9%
246,779	232,647	6.1%
17,148	16,276	5.4%
372,729,622	340,292,156	9.5%

CY 2018 Budget	CY 2018 Projection
11,215	11,131
613,908	636,676
1,227,816	1,273,352
80.6%	80.3%
761,788	792,586
1,126,266,906	1,182,543,159

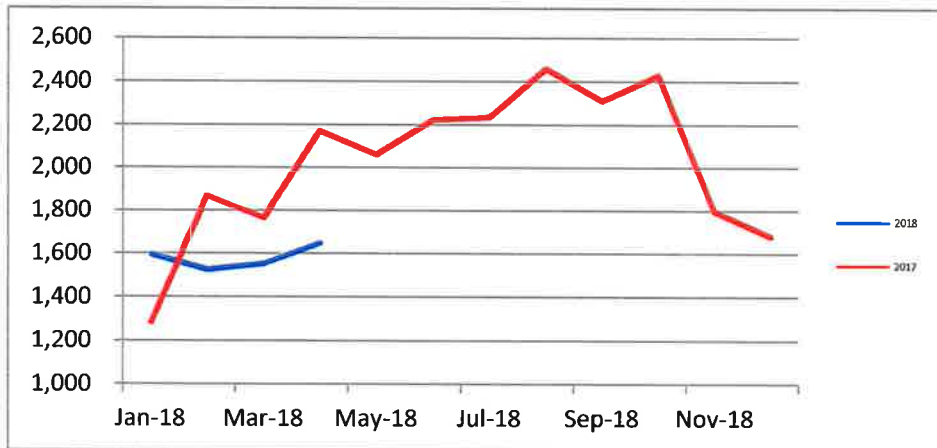


**MDT and CXY Operations
April-18**

MDT Operations	Apr-18	Apr-17	Change	2018 YTD	2017 YTD	Change
Commercial Air Carriers	2,540	2,365	7.4%	12,341	11,733	5.2%
General Aviation	1,081	1,263	-14.4%	5,120	4,977	2.9%
Military	743	714	4.1%	3,040	3,605	-15.7%
Total MDT operations	4,364	4,342	0.5%	20,501	20,315	0.9%



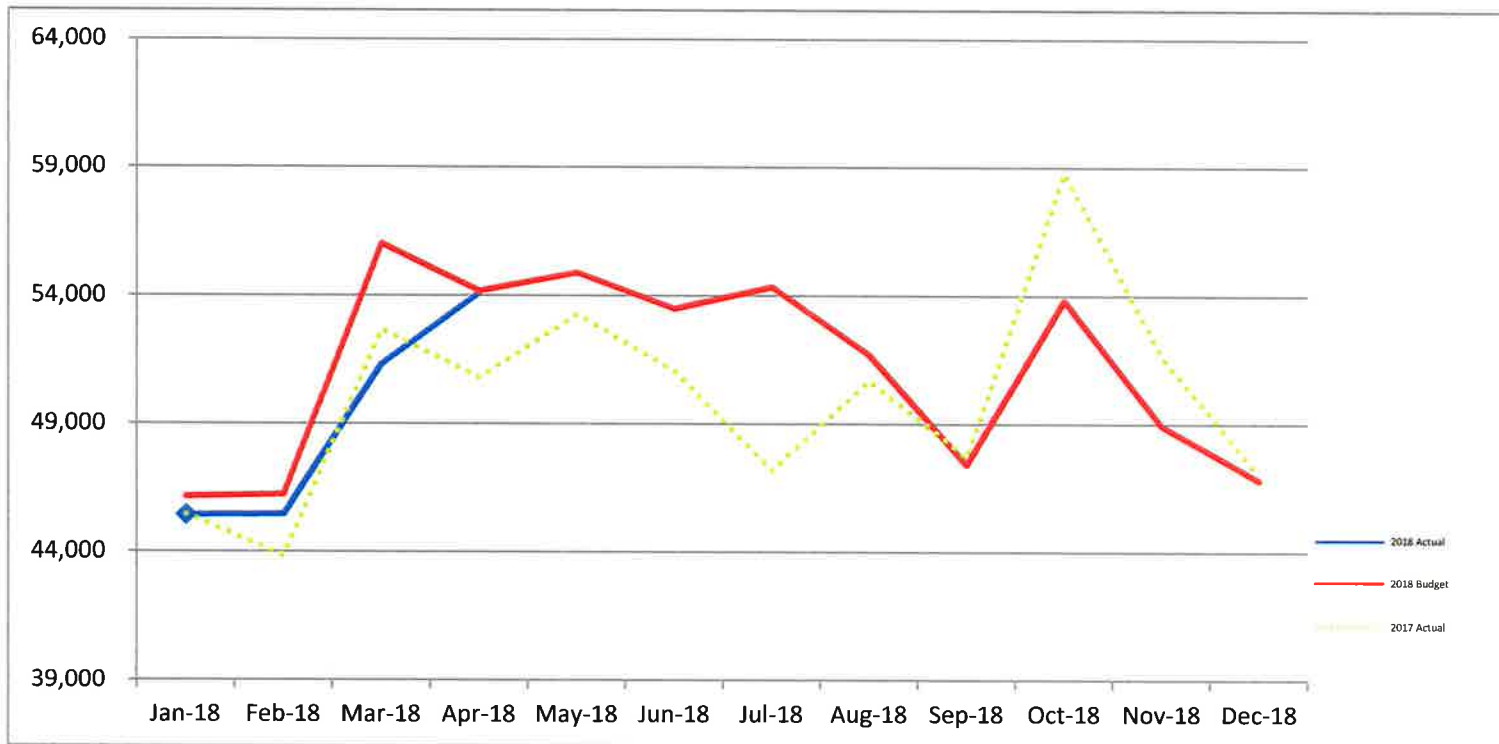
CXY Operations	Apr-18	Apr-17	Change	2018 YTD	2017 YTD	Change
General Aviation	1,519	1,902	-20.1%	7,225	7,667	-5.8%
Military	83	198	-58.1%	762	1,201	-36.6%
Air Taxi	47	71	-33.8%	208	280	-25.7%
Total CXY Operations	1,649	2,171	-24.0%	8,195	9,148	-10.4%





Passenger Enplanement Report April-18

Enplaned	Actual	Budget	% Diff	Actual	Budget	% Diff	Actual	% Diff	Working	Budget	Projection	% Diff
	Apr.	Apr.			YTD 2018							
AA	22,345	22,188	0.7%	82,816	86,213	-3.9%	80,187	3.3%	258,241	258,052	-0.1%	
DL	13,412	12,780	4.9%	47,982	46,502	3.2%	52,528	-8.7%	144,867	147,940	2.1%	
UA	10,433	11,411	-8.6%	36,256	41,806	-13.3%	35,096	3.3%	127,587	125,472	-1.7%	
G4	7,332	6,932	5.8%	26,749	24,864	7.6%	23,343	14.6%	74,217	76,299	2.8%	
F9	-	-	-	-	-	-	-	-	-	16,229	100.0%	
AC	536	782	-31.4%	2,014	2,830	-28.8%	1,679	20.0%	7,998	10,981	37.3%	
SO	64	82	-21.9%	207	319	-35.2%	43	381.4%	997	1,702	70.8%	
Total	54,122	54,175	-0.1%	196,024	202,535	-3.2%	192,876	1.6%	613,908	636,676	3.7%	





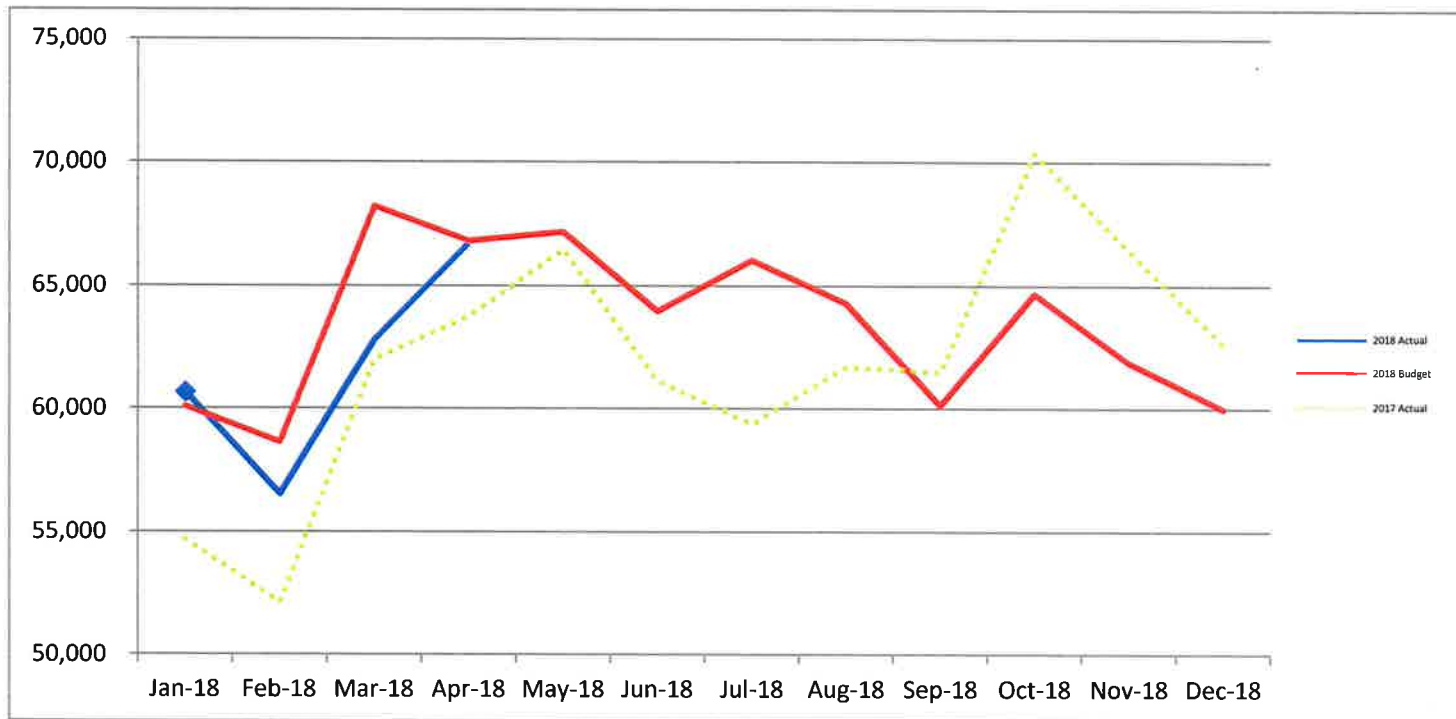
Airline Departing Seat Report April-18

Dep. Seats	Actual	Budget	% Diff
	Apr.	Apr.	
AA	27,052	26,963	0.3%
DL	16,403	15,473	6.0%
UA	13,232	14,506	-8.8%
G4	8,744	8,284	5.6%
F9	-	-	0.0%
AC	1,130	1,422	-20.5%
SO	200	164	22.1%
Total	66,761	66,811	-0.1%

Actual	Budget	% Diff
103,030	107,541	-4.2%
59,668	56,502	5.6%
48,114	54,466	-11.7%
29,963	28,946	3.5%
-	-	0.0%
5,076	5,598	-9.3%
928	655	41.6%
246,779	253,709	-2.7%

Actual	% Diff
98,559	4.5%
61,878	-3.6%
41,865	14.9%
26,899	11.4%
0	0.0%
3,294	54.1%
152	510.5%
232,647	6.1%

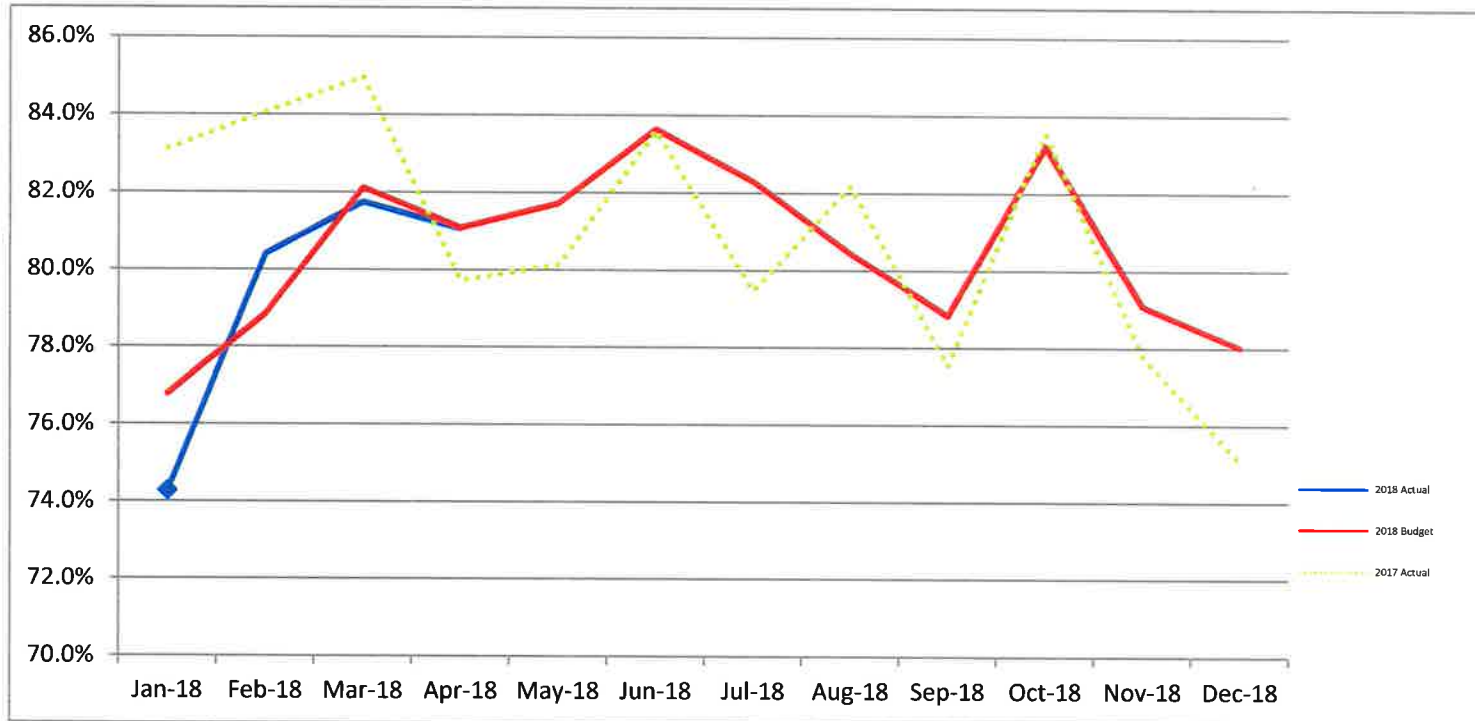
Budget	Working Projection	% Diff
322,775	321,930	-0.3%
172,664	177,524	2.8%
162,914	160,738	-1.3%
86,931	88,789	2.1%
-	19,165	100.0%
14,531	20,678	42.3%
1,973	3,762	90.6%
761,788	792,586	4.0%





Airline Departing Load Factor Report April-18

Dep. LF	Actual			Actual			Actual		Working		
	Apr.	Budget Apr.	% Diff	YTD 2018	Budget YTD 2018	% Diff	YTD 2017	% Diff	Budget CY 2018	Projection CY 2018	% Diff
AA	82.7%	81.9%	0.8%	81.5%	80.7%	0.8%	80.8%	0.8%	80.0%	80.3%	0.3%
DL	82.5%	84.4%	-1.9%	82.1%	82.9%	-0.8%	84.8%	-2.7%	83.9%	83.4%	-0.5%
UA	78.1%	81.1%	-2.9%	75.2%	77.0%	-1.8%	82.6%	-7.4%	78.3%	77.4%	-0.9%
G4	91.2%	86.5%	4.7%	87.5%	85.5%	2.0%	85.6%	1.9%	85.4%	85.9%	0.5%
F9										84.7%	
AC	39.8%	52.0%	-12.2%	41.7%	52.1%	-10.4%	53.7%	-12.0%	55.0%	53.4%	-1.6%
SO	24.6%	50.0%	-25.4%	22.2%	49.0%	-26.8%	28.0%	-5.8%	50.5%	40.1%	-10.4%
Total	81.8%	82.1%	-0.4%	80.0%	80.2%	-0.2%	82.3%	-2.3%	80.6%	80.3%	-0.2%





Airline Landed Weight Report April-18

Landed Weight	Actual			Budget			Actual		Working Projection		
	Apr.	Apr.	% Diff	YTD 2018	YTD 2018	% Diff	YTD 2017	% Diff	CY 2018	CY 2018	% Diff
AA	26,604,120	25,707,630	3.5%	101,326,476	104,128,781	-2.7%	95,269,150	6.4%	307,829,974	313,051,139	1.7%
DL	16,790,100	15,157,196	10.8%	60,473,000	54,305,320	11.4%	60,617,600	-0.2%	166,578,814	177,209,652	6.4%
UA	13,183,034	13,992,542	-5.8%	47,283,275	52,127,224	-9.3%	40,437,713	16.9%	154,226,193	155,104,003	0.6%
G4	7,174,983	6,654,866	7.8%	24,348,499	23,361,856	4.2%	22,205,578	9.7%	69,945,921	72,358,272	3.4%
F9	-	-	-	-	-	-	0	-	-	19,085,665	#DIV/0!
AC	1,043,000	1,310,985	-20.4%	4,697,200	5,163,015	-9.0%	3,037,800	54.6%	13,401,180	16,221,237	21.0%
SO	212,500	174,038	22.1%	986,000	696,150	41.6%	161,500	510.5%	2,096,738	3,997,338	90.6%
Charters	-	-	-	431,281	-	100.0%	2,714,481	-84.1%	-	-	-
Diversions	977,492	-	-	3,871,992	-	100.0%	5,299,214	-26.9%	-	-	-
Cargo	32,799,120	31,276,753	4.9%	129,311,899	120,906,947	7.0%	110,549,120	17.0%	412,188,087	425,515,854	3.2%
Total	98,784,349	94,274,010	4.8%	372,729,622	360,689,292	3.3%	340,292,156	9.5%	1,126,266,906	1,182,543,159	5.0%

