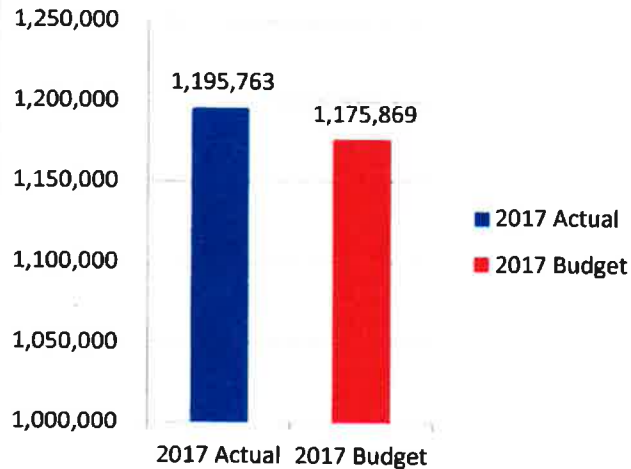


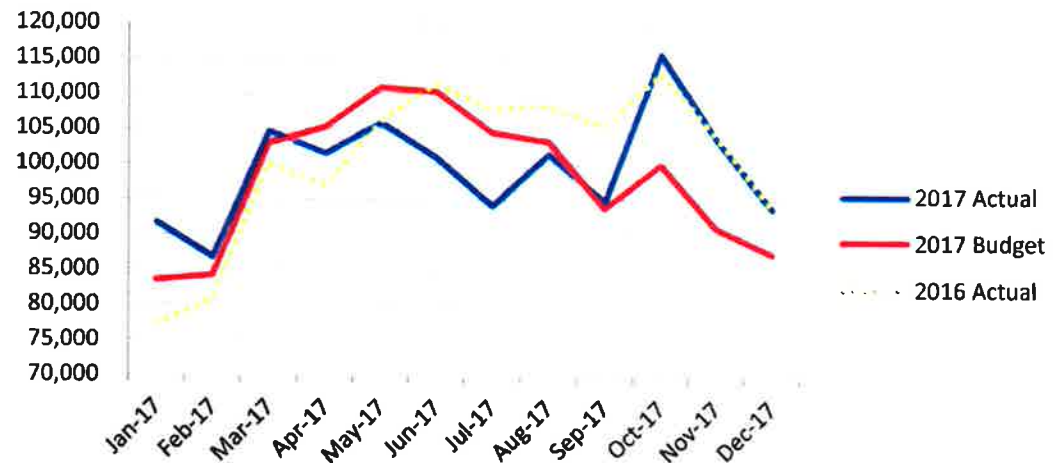
**Harrisburg International Airport Passenger Statistics
December-17**

Harrisburg Int'l Airport	Dec. 2017 Actual	Dec. 2017 Budget	% Change	2017 Actual YTD	2017 Budget YTD	% Change	2017 Actual YTD	2016 Actual YTD	% Change	CY 2017 Projection
Enplaned Passengers	47,025	43,598	7.9%	600,443	587,934	2.1%	600,443	607,335	-1.1%	598,259
Total Passengers	93,829	87,196	7.6%	1,195,763	1,175,869	1.7%	1,195,763	1,205,461	-0.8%	1,196,518
Departing Load Factor	75.1%	77.1%	-2.0%	80.9%	79.7%	1.2%	80.9%	82.7%	-1.8%	81.0%
Departing Seat Capacity	62,635	56,557	10.7%	742,318	737,474	0.7%	742,318	734,574	1.1%	738,461
Total Cargo Tonnage	5,662			51,886			51,886	52,807	-1.7%	
Commercial Landed Weight	114,976,377	98,076,807	17.2%	1,095,441,034	1,013,046,633	8.1%	1,095,441,034	1,074,743,738	1.9%	1,062,204,728

HIA Total Passengers



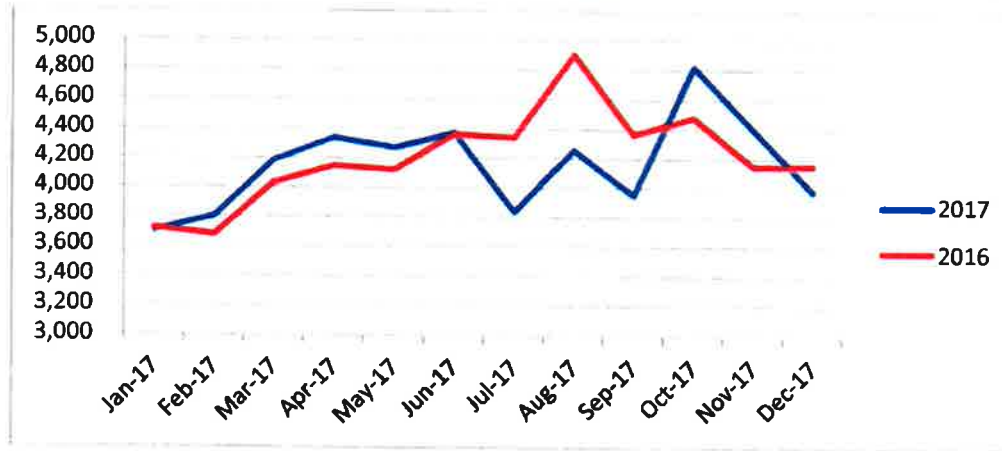
MDT Total Passengers



**MDT and CXY Operations
December-17**

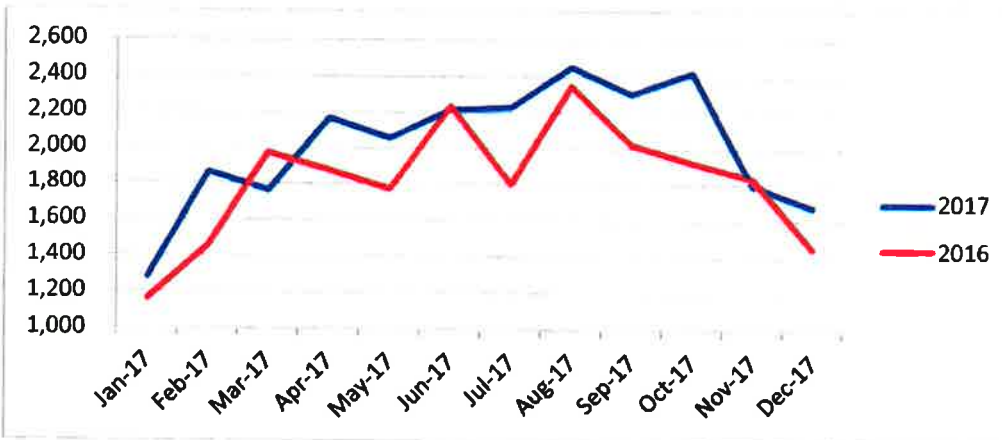
MDT Operations	Dec-17	Dec-16	Change
Commercial Air Carriers	2,577	2,530	1.9%
General Aviation	879	810	8.5%
Military	528	808	-34.7%
Total MDT operations	3,984	4,148	-4.0%

2017 YTD	2016 YTD	Change
29,323	29,741	-1.4%
12,987	11,348	14.4%
7,649	9,341	-18.1%
49,959	50,430	-0.9%



CXY Operations	Dec-17	Dec-16	Change
General Aviation	1,508	1,203	25.4%
Military	110	185	-40.5%
Air Taxi	61	57	7.0%
Total CXY Operations	1,679	1,445	16.2%

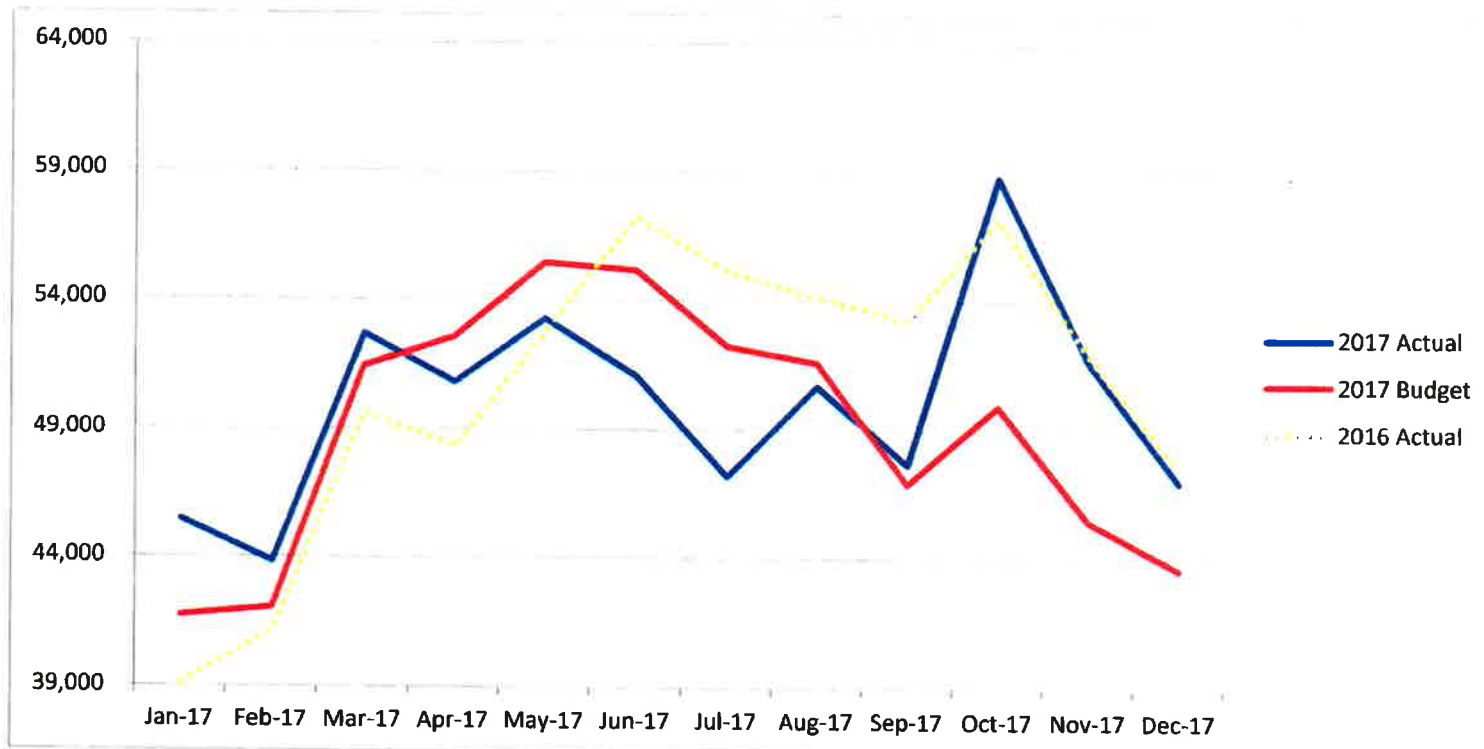
2017 YTD	2016 YTD	Change
21,307	18,271	16.6%
2,264	3,083	-26.6%
701	484	44.8%
24,272	21,838	11.1%





**Passenger Enplanement Report
December-17**

Enplaned	Actual	Budget	% Diff	Actual	Budget	% Diff	Actual	% Diff	Budget	Working	% Diff
	Dec.	Dec.		YTD 2017	YTD 2017		YTD 2016		CY 2017	Projection CY 2017	
AA	19,687	17,802	10.6%	244,325	245,529	-0.5%	239,983	1.8%	245,529	245,455	0.0%
DL	10,913	11,224	-2.8%	161,768	150,233	7.7%	161,233	0.3%	150,233	162,139	7.9%
UA	8,820	8,444	4.5%	116,261	117,221	-0.8%	127,259	-8.6%	117,221	114,064	-2.7%
G4	5,801	5,614	3.3%	68,761	66,099	4.0%	69,552	-1.1%	66,099	68,580	3.8%
AC	555	343	61.7%	7,900	6,429	22.9%	6,809	16.0%	6,429	7,899	22.9%
SO	58	171	-66.1%	180	2,424	-92.6%	101	78.2%	2,424	122	-95.0%
Total	45,834	43,598	5.1%	599,195	587,934	1.9%	604,937	-0.9%	587,934	598,259	1.8%





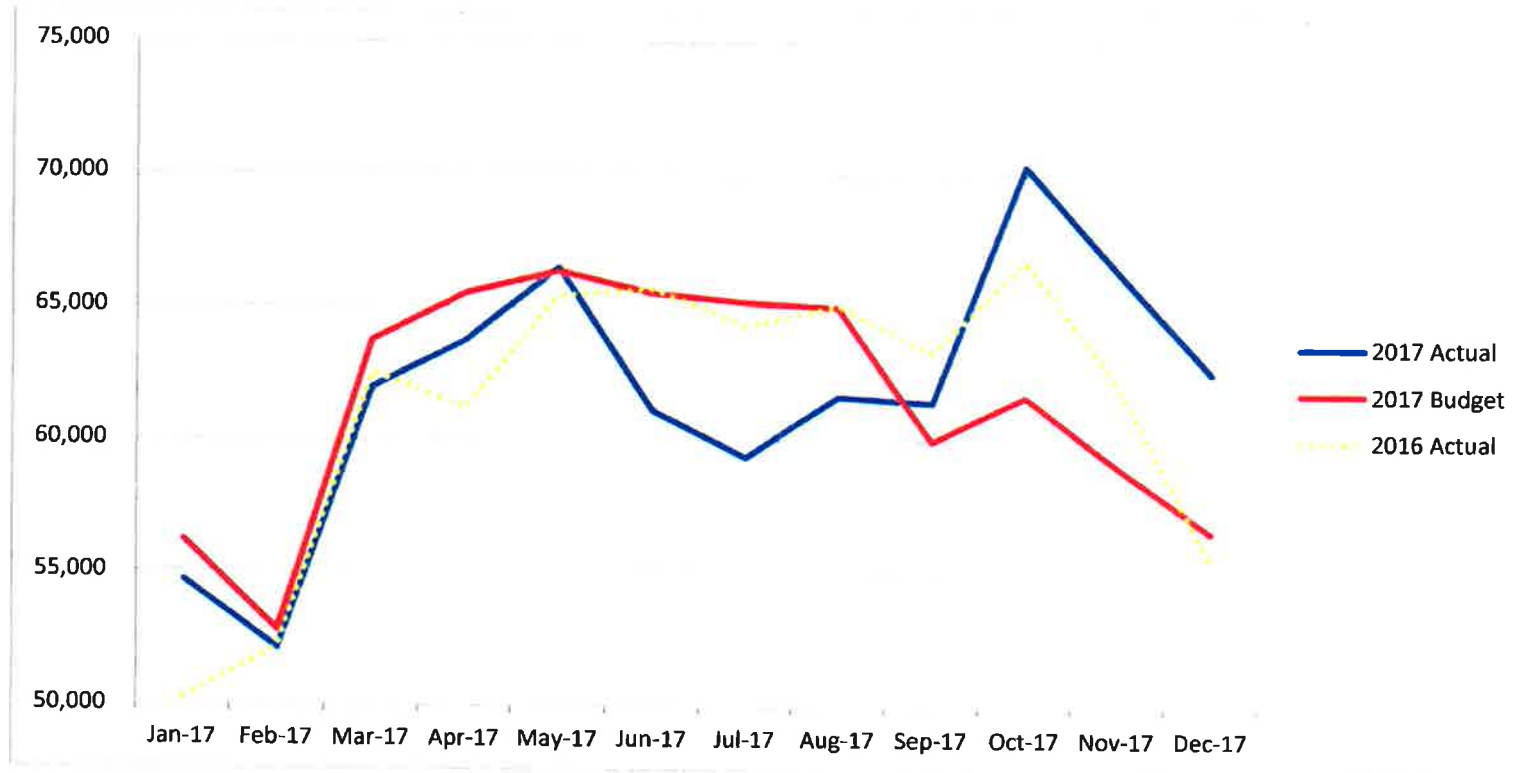
Airline Departing Seat Report December-17

Dep. Seats	Actual Dec.	Budget Dec.	% Diff
AA	28,018	23,459	19.4%
DL	13,366	13,914	-3.9%
UA	12,852	11,616	10.6%
G4	6,751	6,354	6.2%
AC	1,432	780	83.6%
SO	216	433	-50.2%
Total	62,635	56,557	10.7%

Actual YTD 2017	Budget YTD 2017	% Diff
310,130	303,321	2.2%
189,907	182,191	4.2%
146,097	157,399	-7.2%
80,874	77,610	4.2%
14,430	11,808	22.2%
880	5,146	-82.9%
742,318	737,474	0.7%

Actual YTD 2016	% Diff
299,227	3.6%
189,382	0.3%
155,736	-6.2%
78,682	2.8%
11,214	28.7%
333	164.3%
734,574	1.1%

Budget CY 2017	Working Projection CY 2017	% Diff
303,321	309,311	2.0%
182,191	190,539	4.6%
157,399	143,203	-9.0%
77,610	80,487	3.7%
11,808	14,257	20.7%
5,146	664	-87.1%
737,474	738,461	0.1%





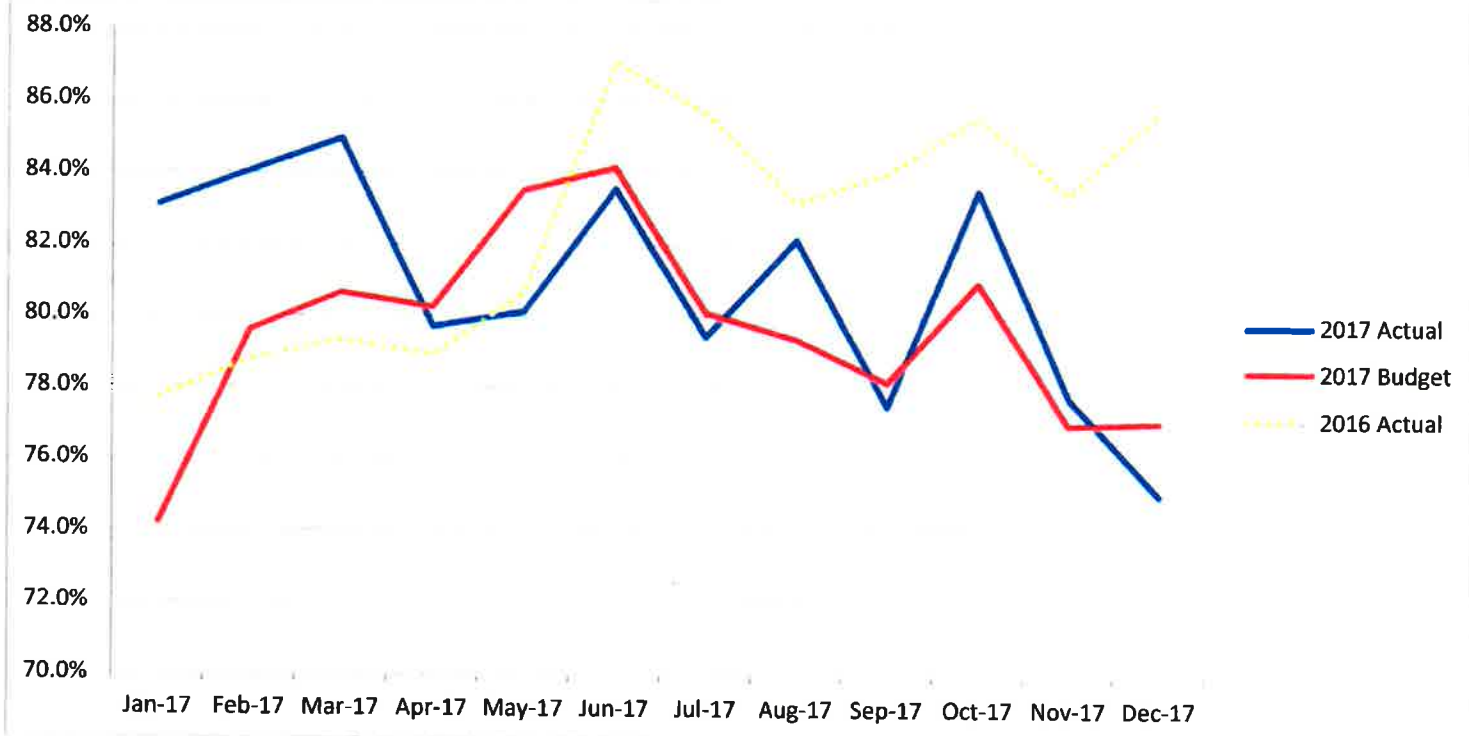
Airline Departing Load Factor Report December-17

Dep. LF	Actual Dec.	Budget Dec.	% Diff
AA	70.3%	75.9%	-5.6%
DL	81.6%	80.7%	1.0%
UA	68.6%	72.7%	-4.1%
G4	85.9%	88.3%	-2.4%
AC	38.8%	44.0%	-5.2%
SO	26.9%	39.5%	-12.7%
Total	73.2%	77.1%	-3.9%

Actual YTD 2017	Budget YTD 2017	% Diff
78.8%	80.9%	-2.2%
85.2%	82.5%	2.7%
79.6%	74.5%	5.1%
85.0%	85.2%	-0.1%
54.7%	54.4%	0.3%
20.5%	47.1%	-26.6%
80.7%	79.7%	1.0%

Actual YTD 2016	% Diff
80.2%	-1.4%
85.1%	0.0%
81.7%	-2.1%
88.4%	-3.4%
60.7%	-6.0%
30.3%	-9.9%
82.4%	-1.6%

Budget CY 2017	Working Projection CY 2017	% Diff
80.9%	79.4%	-1.6%
82.5%	85.1%	2.6%
74.5%	79.7%	5.2%
85.2%	85.2%	0.0%
54.4%	55.4%	1.0%
47.1%	18.4%	-28.7%
79.7%	81.0%	1.3%





Airline Landed Weight Report December-17

Landed Weight	Actual	Budget	% Diff	Actual	Budget	% Diff	Actual	% Diff	Budget	Working	% Diff
	Dec.	Dec.		YTD 2017	YTD 2017		YTD 2016		CY 2017	Projection	
AA	27,572,194	22,493,608	22.6%	300,584,090	292,940,084	2.6%	288,977,752	4.0%	292,940,084	299,675,304	2.3%
DL	13,340,200	13,696,031	-2.6%	185,014,800	179,958,220	2.8%	184,904,145	0.1%	179,958,220	185,550,886	3.1%
UA	12,504,554	11,091,671	12.7%	142,906,599	145,326,145	-1.7%	145,780,349	-2.0%	145,326,145	139,596,627	-3.9%
G4	5,426,149	5,256,033	3.2%	66,511,200	63,892,309	4.1%	64,635,606	2.9%	63,892,309	66,246,197	3.7%
AC	1,330,400	719,444	84.9%	13,329,000	10,889,766	22.4%	10,341,800	28.9%	10,889,766	13,159,521	20.8%
SO	229,500	460,488	-50.2%	935,000	5,467,243	-82.9%	365,500	155.8%	5,467,243	705,500	-87.1%
Charters	2,828,000			6,217,981		100.0%	4,593,481	35.4%			
Diversions	566,500			16,510,324		100.0%	11,829,765	39.6%			
Cargo	51,178,880	44,359,533	15.4%	363,432,040	314,572,867	15.5%	363,315,340	0.0%	314,572,867	356,612,693	13.4%
Total	114,976,377	98,076,807	17.2%	1,095,441,034	1,013,046,633	8.1%	1,074,743,738	1.9%	1,013,046,633	1,061,546,728	4.8%

