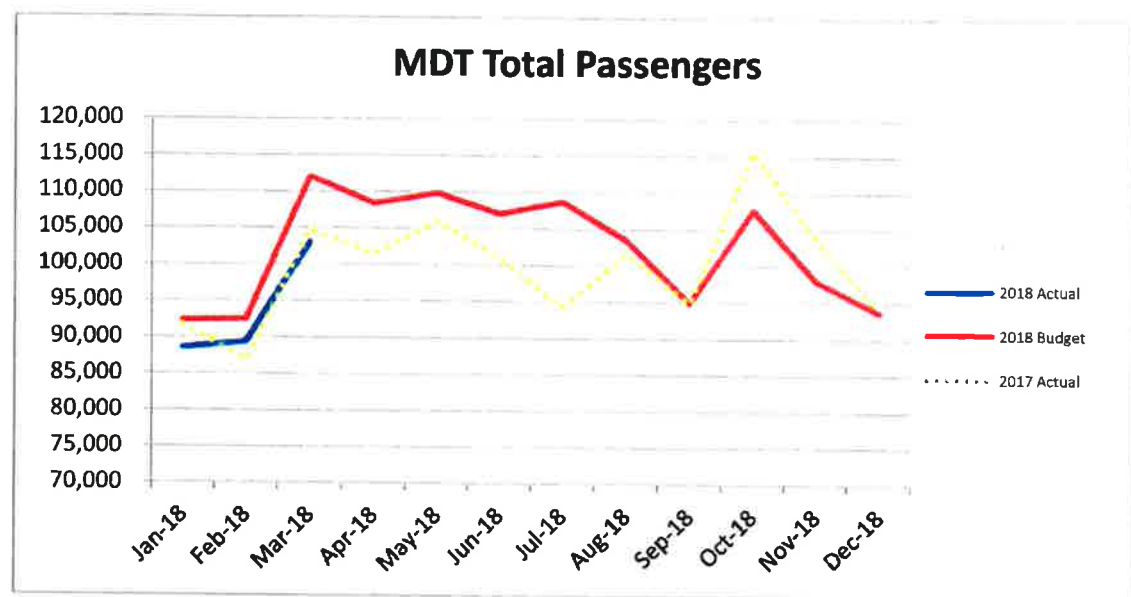
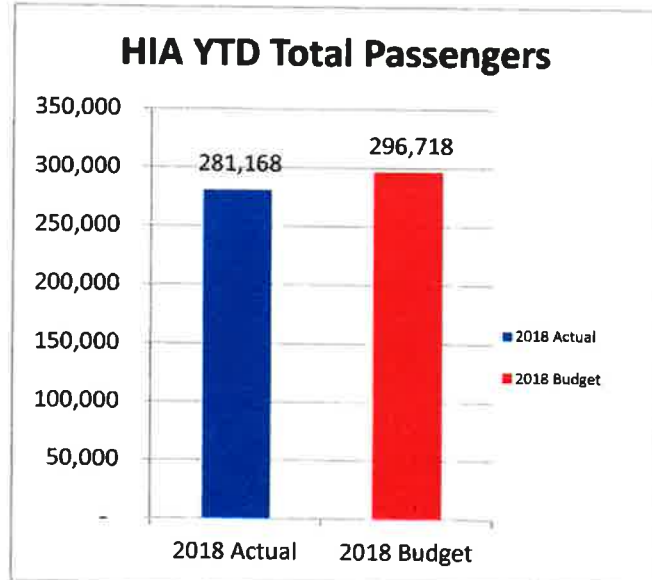


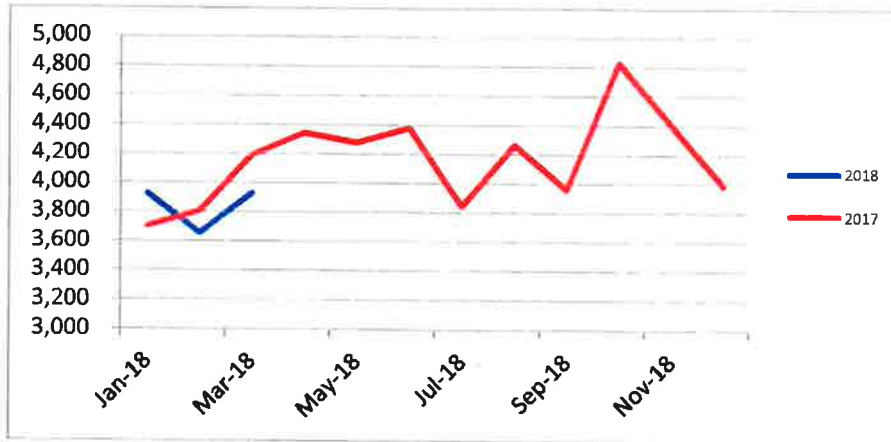
**Harrisburg International Airport Passenger Statistics
March-18**

Harrisburg Int'l Airport	Mar-18 Actual	Mar-18 Budget	% Change	2018 Actual YTD	2018 Budget YTD	% Change	2018 Actual YTD	2017 Actual YTD	% Change	CY 2018 Budget	CY 2018 Projection
Departures	901	989	-8.9%	2,583	2,718	-5.0%	2,583	2,453	5.3%	11,215	11,457
Enplaned Passengers	51,364	56,009	-8.3%	142,283	148,359	-4.1%	142,283	142,024	0.2%	613,908	636,991
Total Passengers	103,075	112,018	-8.0%	281,168	296,718	-5.2%	281,168	283,248	-0.7%	1,227,816	1,273,982
Departing Load Factor	81.8%	82.1%	-0.4%	78.8%	79.4%	-0.6%	78.8%	84.1%	-5.3%	80.6%	80.5%
Departing Seat Capacity	62,825	68,206	-7.9%	180,018	186,898	-3.7%	180,018	168,870	6.6%	761,788	791,488
Total Cargo Tonnage	4,416			12,996			12,996	12,007	8.2%		
Landed Weight	94,250,764	94,916,677	-0.7%	273,630,773	266,415,282	2.7%	273,630,773	252,708,898	8.3%	1,126,266,906	1,174,595,369

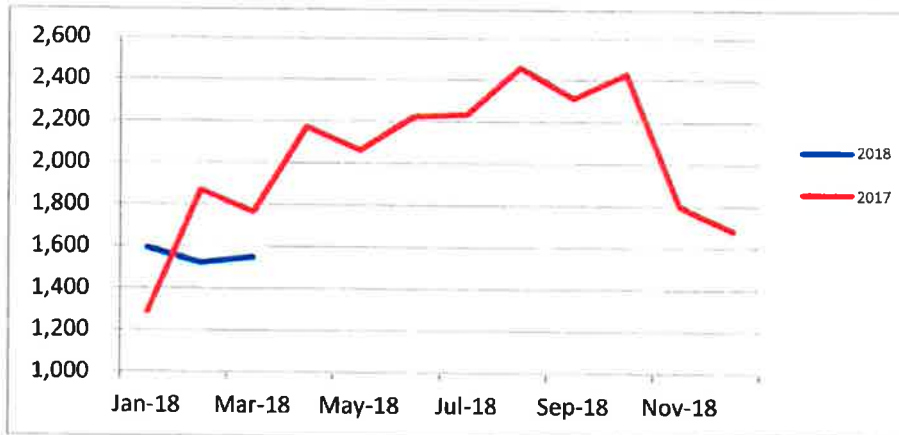


**MDT and CXY Operations
February-18**

MDT Operations	Mar-18	Mar-17	Change	2018 YTD	2017 YTD	Change
Commercial Air Carriers	2,453	2,391	2.6%	7,082	6,809	4.0%
General Aviation	1,020	1,027	-0.7%	2,876	2,698	6.6%
Military	458	772	-40.7%	1,558	2,190	-28.9%
Total MDT operations	3,931	4,190	-6.2%	11,516	11,697	-1.5%



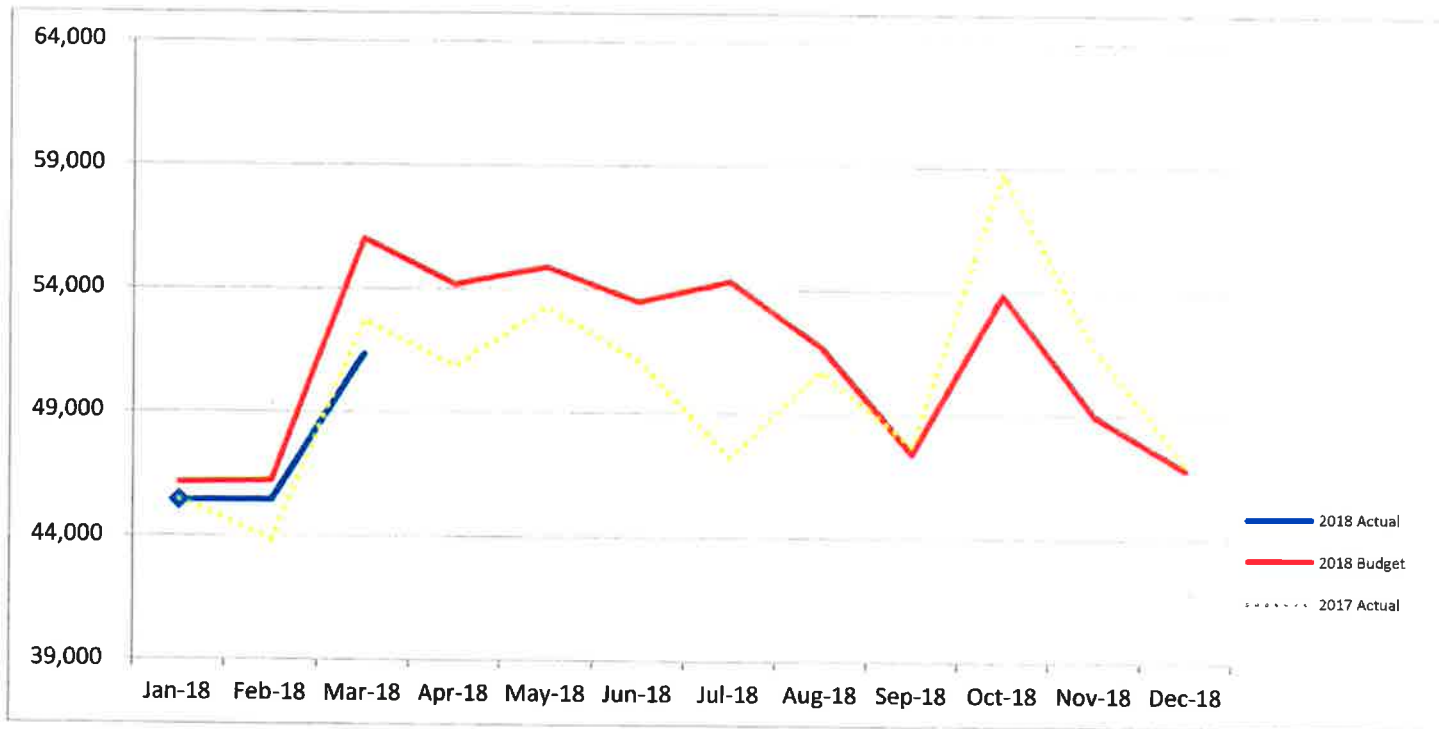
CXY Operations	Mar-18	Mar-17	Change	2018 YTD	2017 YTD	Change
General Aviation	1,328	1,380	-3.8%	4,110	3,976	3.4%
Military	186	325	-42.8%	450	780	-42.3%
Air Taxi	39	59	-33.9%	114	160	-28.8%
Total CXY Operations	1,553	1,764	-12.0%	4,674	4,916	-4.9%





Passenger Enplanement Report March-18

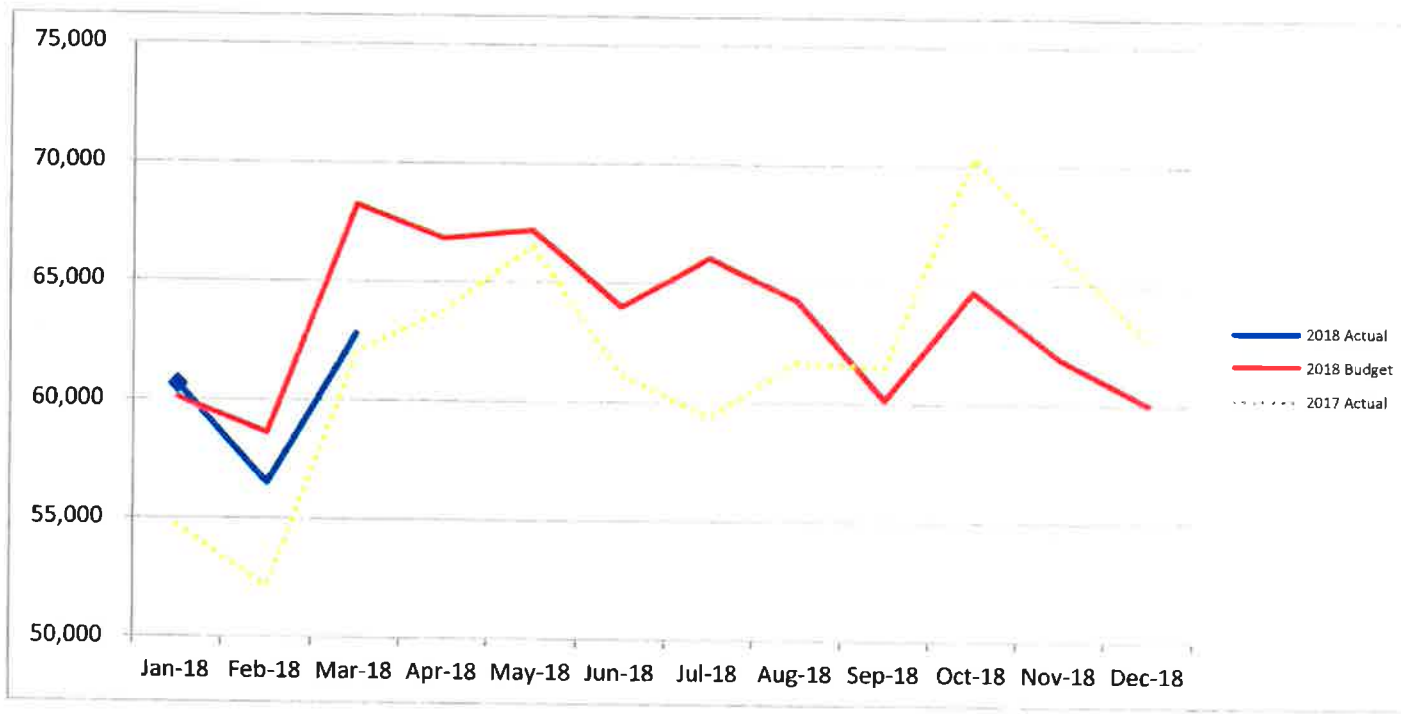
Enplaned	Actual	Budget	% Diff	Actual	Budget	% Diff	Actual	% Diff	Budget	Working	% Diff
	Mar.	Mar.		YTD 2018	YTD 2018		YTD 2017		CY 2018	Projection	
AA	20,768	23,223	-10.6%	60,471	64,025	-5.6%	59,794	1.1%	258,241	256,564	-0.6%
DL	13,187	12,657	4.2%	34,570	33,722	2.5%	39,147	-11.7%	144,867	151,042	4.3%
UA	9,233	12,135	-23.9%	25,823	30,396	-15.0%	24,762	4.3%	127,587	124,145	-2.7%
G4	7,577	7,160	5.8%	19,417	17,932	8.3%	17,038	14.0%	74,217	77,086	3.9%
F9	-	-	-	-	-	-	-	-	-	16,229	100.0%
AC	534	748	-28.6%	1,478	2,048	-27.8%	1,251	18.1%	7,998	11,024	37.8%
SO	65	86	-24.2%	143	238	-39.8%	32	346.9%	997	902	-9.5%
Total	51,364	56,009	-8.3%	141,902	148,359	-4.4%	142,024	-0.1%	613,908	636,991	3.8%





Airline Departing Seat Report March-18

Dep. Seats	Actual			Budget			Actual		Working		
	Mar.	Mar.	% Diff	YTD 2018	YTD 2018	% Diff	YTD 2017	% Diff	Budget CY 2018	Projection CY 2018	% Diff
AA	25,108	28,357	-11.5%	75,978	80,578	-5.7%	72,270	5.1%	322,775	319,322	-1.1%
DL	15,987	14,996	6.6%	43,265	41,029	5.4%	45,808	-5.6%	172,664	181,323	5.0%
UA	11,816	14,970	-21.1%	34,882	39,960	-12.7%	28,722	21.4%	162,914	159,181	-2.3%
G4	8,308	8,273	0.4%	21,219	20,662	2.7%	19,508	8.8%	86,931	89,827	3.3%
F9	-	-	0.0%	-	-	0.0%	0	0.0%	-	19,165	100.0%
AC	1,342	1,439	-6.7%	3,946	4,177	-5.5%	2,466	60.0%	14,531	20,461	40.8%
SO	264	172	53.8%	728	491	48.1%	96	658.3%	1,973	2,210	12.0%
Total	62,825	68,206	-7.9%	180,018	186,898	-3.7%	168,870	6.6%	761,788	791,488	3.9%





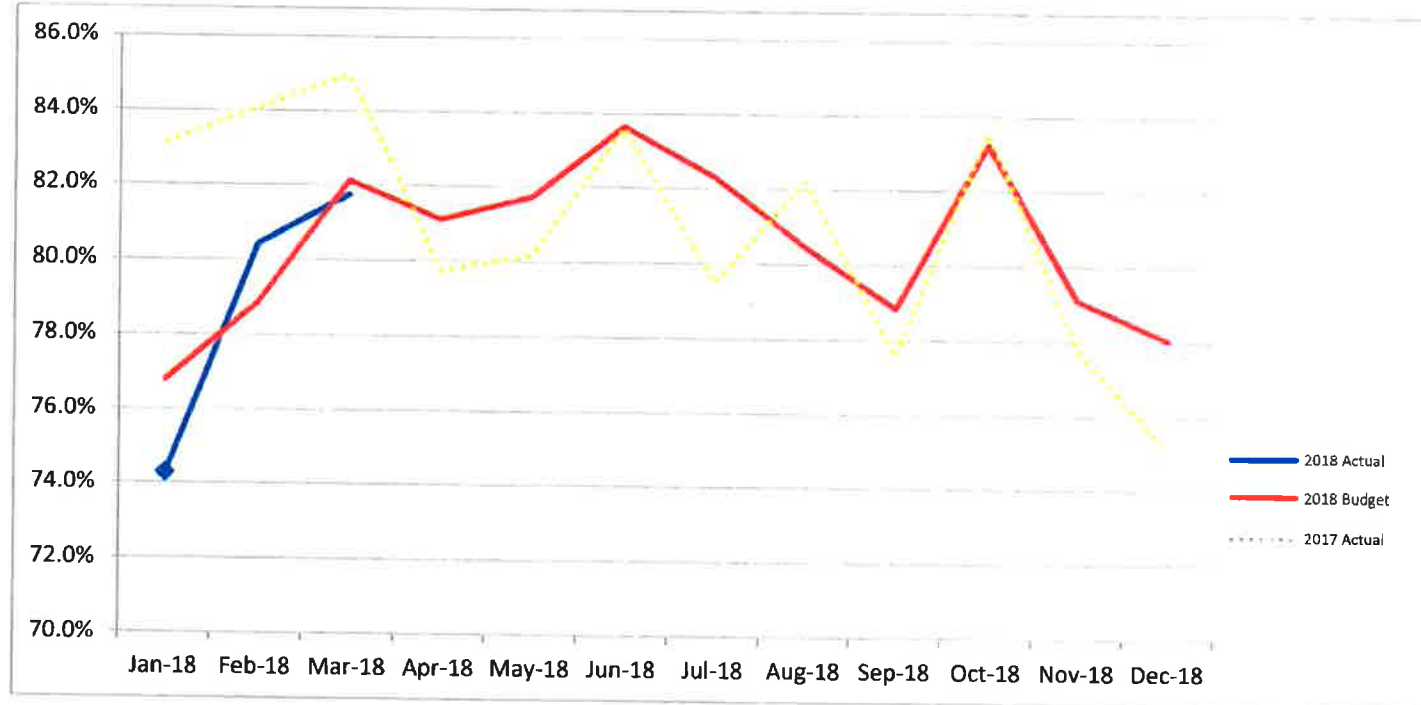
Airline Departing Load Factor Report March-18

Dep. LF	Actual		% Diff
	Mar.	Mar.	
AA	82.7%	81.9%	0.8%
DL	82.5%	84.4%	-1.9%
UA	78.1%	81.1%	-2.9%
G4	91.2%	86.5%	4.7%
F9			
AC	39.8%	52.0%	-12.2%
SO	24.6%	50.0%	-25.4%
Total	81.8%	82.1%	-0.4%

Actual	Budget	% Diff
79.6%	79.5%	0.1%
79.9%	82.2%	-2.3%
74.0%	76.1%	-2.0%
91.5%	86.8%	4.7%
37.5%	49.0%	-11.6%
19.6%	48.3%	-28.7%
78.8%	79.4%	-0.6%

Actual	% Diff
82.7%	-3.1%
85.5%	-5.6%
86.2%	-12.2%
87.3%	4.2%
50.7%	-13.3%
33.3%	-13.7%
84.1%	-5.3%

Budget	Working Projection	% Diff
80.0%	80.3%	0.3%
83.9%	83.3%	-0.6%
78.3%	78.0%	-0.3%
85.4%	85.8%	0.4%
	84.7%	
55.0%	53.9%	-1.2%
50.5%	40.8%	-9.7%
80.6%	80.5%	-0.1%





Airline Landed Weight Report March-18

Landed Weight	Actual Mar.			Budget Mar.			Actual YTD 2018		Budget YTD 2018		Actual YTD 2017		Budget CY 2018		Working Projection CY 2018	
	Actual Mar.	Budget Mar.	% Diff	Actual YTD 2018	Budget YTD 2018	% Diff	Actual YTD 2017	% Diff	Budget CY 2018	Working Projection CY 2018	% Diff					
AA	24,692,466	27,266,314	-9.4%	74,722,356	78,421,151	-4.7%	69,890,200	6.9%	307,829,974	310,789,844	1.0%					
DL	15,734,000	14,167,321	11.1%	43,682,900	39,148,124	11.6%	44,776,500	-2.4%	166,578,814	177,702,204	6.7%					
UA	11,557,208	14,450,838	-20.0%	34,100,241	38,134,682	-10.6%	27,427,539	24.3%	154,226,193	152,269,399	-1.3%					
G4	6,785,990	6,652,236	2.0%	17,173,916	16,706,990	2.8%	16,145,024	6.4%	69,945,921	73,146,347	4.6%					
F9	-	-	-	-	-	-	0	-	-	18,884,285	100.0%					
AC	1,239,400	1,327,170	-6.6%	3,654,200	3,852,030	-5.1%	2,274,200	60.7%	13,401,180	16,221,237	21.0%					
SO	280,500	182,325	53.8%	773,500	522,113	48.1%	102,000	658.3%	2,096,738	2,348,125	12.0%					
Charters	-	-	-	431,281	-	100.0%	2,714,481	-84.1%	-	-	-					
Diversions	954,400	-	-	2,894,500	-	100.0%	4,714,914	-38.6%	-	-	-					
Cargo	33,006,800	30,870,473	6.9%	96,198,279	89,630,193	7.3%	84,664,040	13.6%	412,188,087	423,233,929	2.7%					
Total	94,250,764	94,916,677	-0.7%	273,630,773	266,415,282	2.7%	252,708,898	8.3%	1,126,266,906	1,174,595,369	4.3%					

