

**Passenger and Operational Statistics  
March-17**



Harrisburg International Airport	Mar-17	Mar-16	% Change	2017 YTD	2016 YTD	% Change
Enplaned Passengers	52,694	49,639	6.2	141,992	129,867	9.3
Total Passengers	104,661	100,075	4.6	283,180	257,690	9.9
Departing Load Factor	85.0%	79.4%	5.6%	84.1%	78.7%	5.4%
Departing Seat Capacity	61,995	62,551	(0.9)	168,774	165,052	2.3
Total Cargo Tonnage	4,466	4,408	1.3	12,052	12,007	0.4
Commercial Landed Weight	90,139,783	87,314,611	3.2	252,606,898	235,807,670	7.1

MDT Operations	Mar-17	Mar-16	% Change	2017 YTD	2016 YTD	% Change
Commercial Air Carriers	2,391	2,494	(4.1)	6,809	7,025	(3.1)
General Aviation	1,027	859	19.6	2,698	2,302	17.2
Military	772	679	13.7	2,190	2,099	4.3
<b>Total MDT operations</b>	<b>4,190</b>	<b>4,032</b>	<b>3.9</b>	<b>11,697</b>	<b>11,426</b>	<b>2.4</b>

CXY Operations	Mar-17	Mar-16	% Change	2017 YTD	2016 YTD	% Change
General Aviation	1,380	1,519	(9.2)	3,976	3,607	10.2
Military	325	420	(22.6)	780	911	(14.4)
Air Taxi	59	34	73.5	160	73	119.2
<b>Total CXY Operations</b>	<b>1,764</b>	<b>1,973</b>	<b>(10.6)</b>	<b>4,916</b>	<b>4,591</b>	<b>7.1</b>

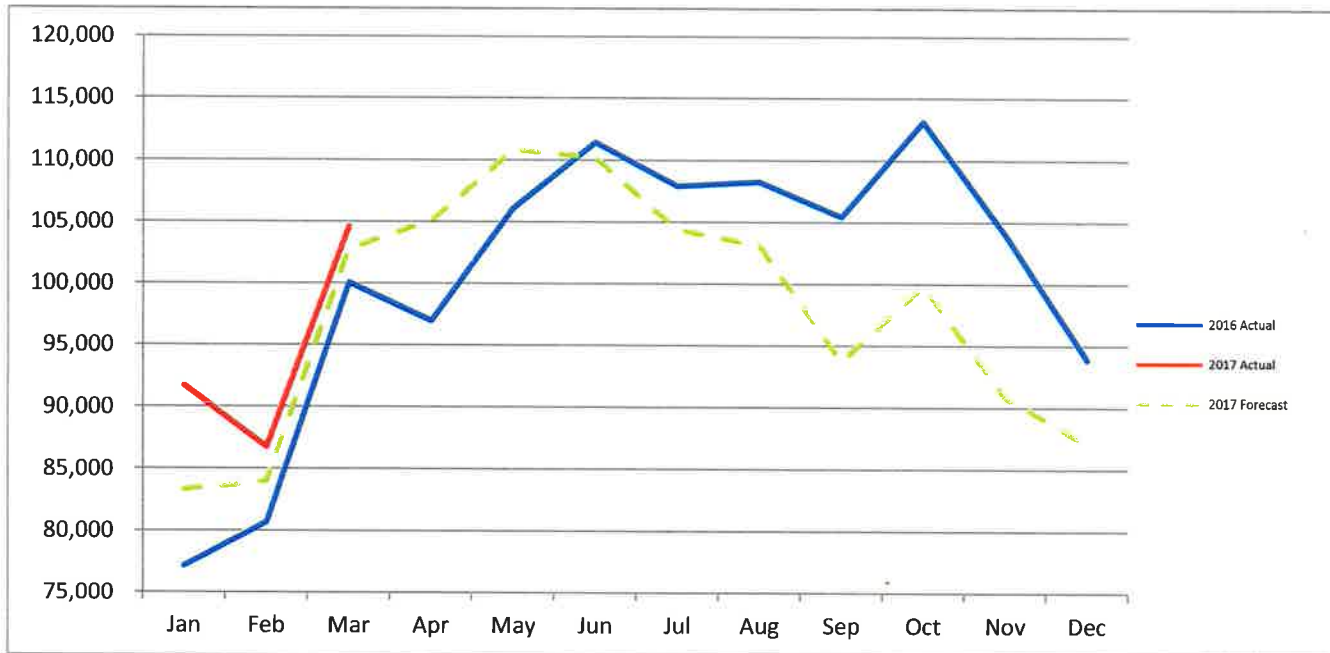


**MDT Total Passengers**

2017	Jan-17	Feb-17	Mar-17	Apr-17	May-17	Jun-17	Jul-17	Aug-17	Sep-17	Oct-17	Nov-17	Dec-17	2017 Total
American	39,656	37,584	41,971	0	0	0	0	0	0	0	0	0	119,211
Delta	23,738	24,608	29,673	0	0	0	0	0	0	0	0	0	78,019
United	14,797	13,511	19,255	0	0	0	0	0	0	0	0	0	47,563
Allegiant	10,498	10,266	12,894	0	0	0	0	0	0	0	0	0	33,658
Air Canada	831	841	868	0	0	0	0	0	0	0	0	0	2,540
Southern	0	0	0	0	0	0	0	0	0	0	0	0	0
Charters	2,189	0	0	0	0	0	0	0	0	0	0	0	2,189
<b>Total</b>	<b>91,709</b>	<b>86,810</b>	<b>104,661</b>	<b>0</b>	<b>0</b>	<b>0</b>	<b>0</b>	<b>0</b>	<b>0</b>	<b>0</b>	<b>0</b>	<b>0</b>	<b>283,180</b>
vs. 2016	18.8%	7.6%	4.6%										

2016	Jan-16	Feb-16	Mar-16	Apr-16	May-16	Jun-16	Jul-16	Aug-16	Sep-16	Oct-16	Nov-16	Dec-16	2016 Total
American	32,485	33,796	38,794	37,917	42,004	43,374	42,697	44,212	42,602	43,423	40,764	37,052	479,120
Delta	20,748	21,275	27,731	27,772	27,462	28,123	25,645	27,569	27,882	33,569	28,607	23,292	319,675
United	14,682	15,069	17,057	19,322	23,219	24,363	22,371	22,835	24,164	24,626	23,176	19,194	250,078
Allegiant	8,344	9,798	15,688	10,897	12,012	14,059	15,543	12,100	9,494	10,031	10,272	10,500	138,738
Air Canada	649	769	805	961	1,360	1,510	1,687	1,579	1,347	1,307	1,083	967	14,024
Southern	0	0	0	0	0	0	0	0	0	22	182	0	3,603
Charters	283	0	0	128	90	0	0	0	0	172	0	2,930	0
<b>Total</b>	<b>77,191</b>	<b>80,707</b>	<b>100,075</b>	<b>96,997</b>	<b>106,147</b>	<b>111,429</b>	<b>107,943</b>	<b>108,295</b>	<b>105,489</b>	<b>113,150</b>	<b>104,084</b>	<b>93,935</b>	<b>1,205,442</b>

	Jan	Feb	Mar	Apr	May	Jun	Jul	Aug	Sep	Oct	Nov	Dec	Totals
2016 Actual	77,191	80,707	100,075	96,997	106,147	111,429	107,943	108,295	105,489	113,150	104,084	93,935	1,205,442
2017 Actual	91,709	86,810	104,661										283,180
2017 Forecast	83,398	84,044	102,852	105,139	110,838	110,263	104,436	103,163	93,753	99,875	90,912	87,196	1,175,869
vs. Forecast	10.0%	3.3%	1.8%										

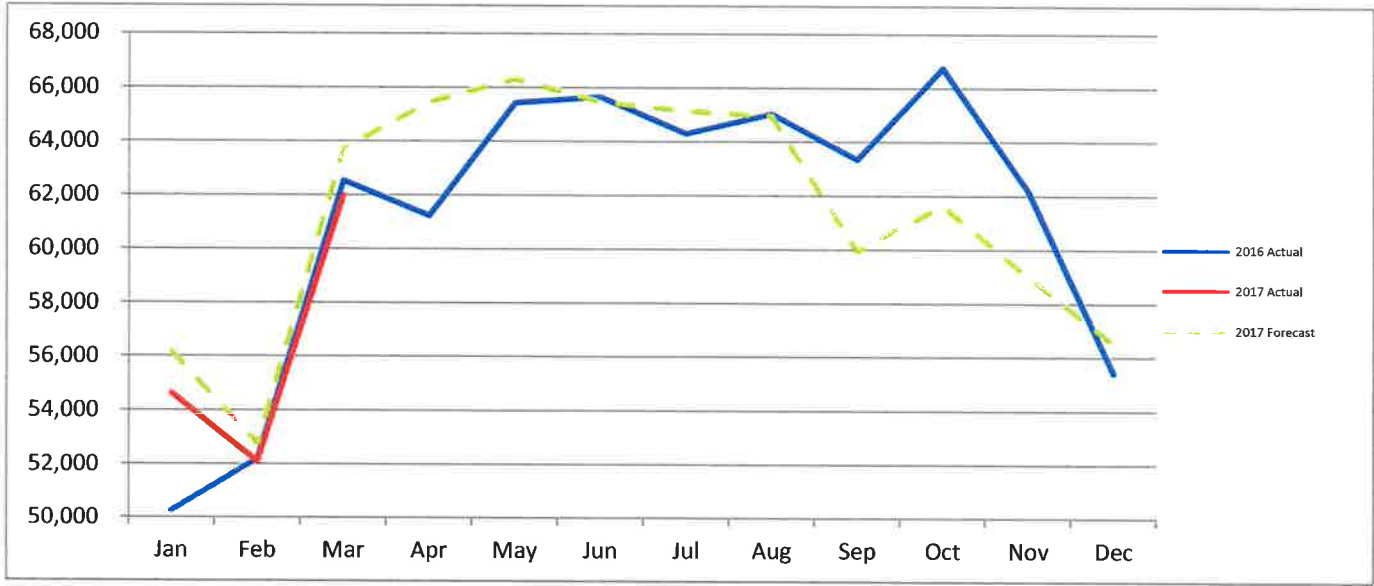


**MDT Departing Seats**

2017	Jan-17	Feb-17	Mar-17	Apr-17	May-17	Jun-17	Jul-17	Aug-17	Sep-17	Oct-17	Nov-17	Dec-17	2017 Total
American	24,542	22,831	24,897	0	0	0	0	0	0	0	0	0	72,270
Delta	13,764	14,268	17,776	0	0	0	0	0	0	0	0	0	45,808
United	9,361	8,516	10,845	0	0	0	0	0	0	0	0	0	28,722
Allegiant	6,141	5,754	7,613	0	0	0	0	0	0	0	0	0	19,508
Air Canada	846	756	864	0	0	0	0	0	0	0	0	0	2,466
Southern	0	0	0	0	0	0	0	0	0	0	0	0	0
<b>Total</b>	<b>54,654</b>	<b>52,125</b>	<b>61,995</b>	<b>0</b>	<b>0</b>	<b>0</b>	<b>0</b>	<b>0</b>	<b>0</b>	<b>0</b>	<b>0</b>	<b>0</b>	<b>168,774</b>
vs. 2016	8.7%	-0.2%	-0.9%										

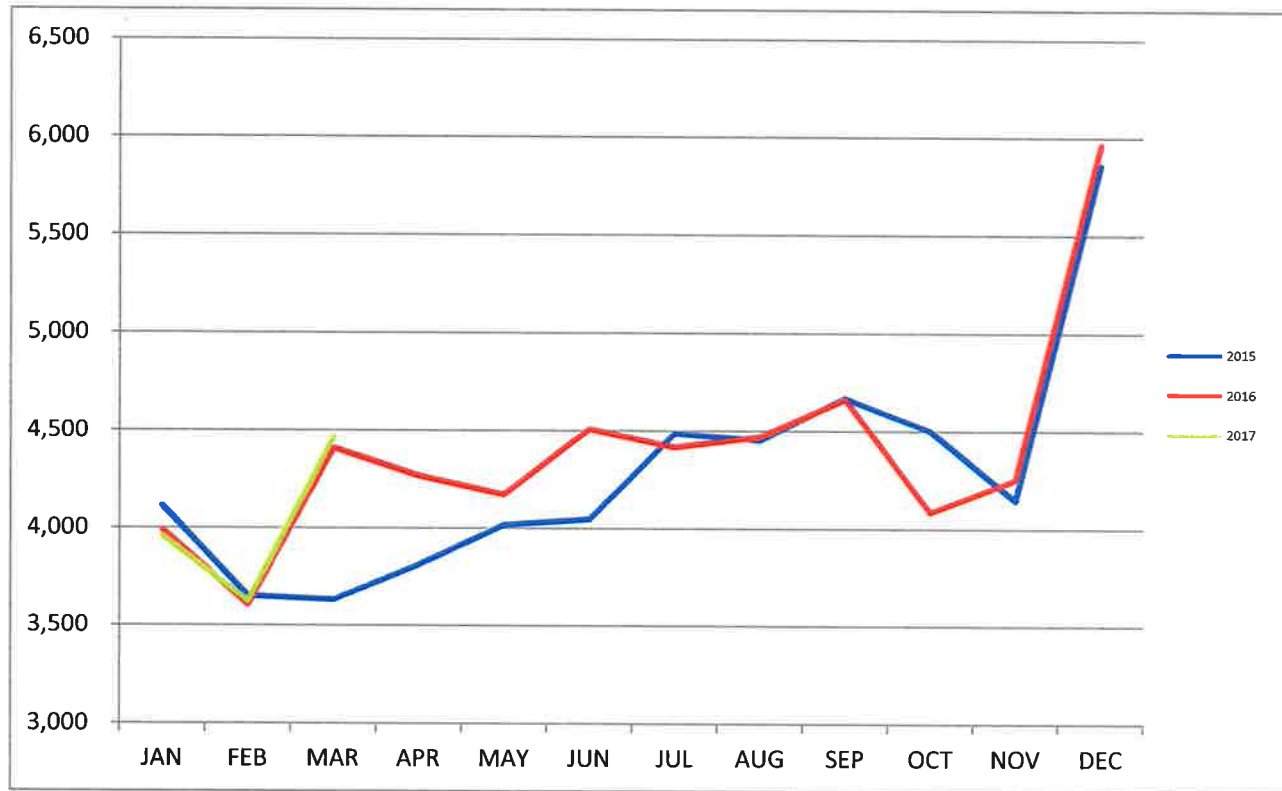
2016	Jan-16	Feb-16	Mar-16	Apr-16	May-16	Jun-16	Jul-16	Aug-16	Sep-16	Oct-16	Nov-16	Dec-16	2016 Total
American	22,034	22,497	25,515	24,854	26,164	25,180	25,443	26,325	25,858	26,345	25,261	23,751	299,227
Delta	13,023	13,489	17,012	17,241	16,370	16,793	15,592	15,941	15,871	18,728	16,295	13,027	189,382
United	9,760	10,020	10,900	12,120	14,933	14,814	13,839	14,292	15,045	14,954	13,609	11,450	155,736
Allegiant	4,758	5,444	8,332	6,163	6,904	7,844	8,331	7,424	5,577	5,665	5,842	6,398	78,682
Air Canada	702	774	792	864	1,080	1,044	1,116	1,080	1,008	1,062	900	792	11,214
Southern	0	0	0	0	0	0	0	0	0	18	297	9	324
<b>Total</b>	<b>50,277</b>	<b>52,224</b>	<b>62,551</b>	<b>61,242</b>	<b>65,451</b>	<b>65,675</b>	<b>64,321</b>	<b>65,062</b>	<b>63,359</b>	<b>66,772</b>	<b>62,204</b>	<b>55,427</b>	<b>734,565</b>

	Jan	Feb	Mar	Apr	May	Jun	Jul	Aug	Sep	Oct	Nov	Dec	Totals
2016 Actual	50,277	52,224	62,551	61,242	65,451	65,675	64,321	65,062	63,359	66,772	62,204	55,427	734,565
2017 Actual	54,654	52,125	61,995										168,774
2017 Forecast	56,189	52,788	63,758	65,503	66,346	65,505	65,178	64,981	59,968	61,676	59,024	56,557	737,474
vs. Forecast	-2.7%	-1.3%	-2.8%										



MDT Total Cargo Tonnage

	JAN	FEB	MAR	APR	MAY	JUN	JUL	AUG	SEP	OCT	NOV	DEC	Total
2015	4,113	3,652	3,634	3,814	4,018	4,048	4,487	4,453	4,670	4,502	4,148	5,861	51,401
2016	3,992	3,607	4,408	4,268	4,173	4,507	4,415	4,469	4,663	4,085	4,253	5,966	52,807
2017	3,959	3,627	4,466										12,052



Cargo Tonnage	Mar-17	Mar-16	% Change	2017 Share	2017 YTD	2016 YTD	% Change	16 YTD Share
Federal Express	2,463.3	2,539.2	(3.0)	55.2%	6,752.6	6,728.3	0.4	56.0%
UPS	1,870.1	1,708.2	9.5	41.9%	4,973.5	4,843.0	2.7	41.3%
Other cargo	127.6	156.8	(18.6)	2.9%	313.1	413.9	(24.4)	2.6%
Commercial	5.0	3.9	29.2	0.1%	13.4	22.2	(39.7)	0.1%
<b>Total</b>	<b>4,466.1</b>	<b>4,408.1</b>	<b>1.3</b>	<b>100.0%</b>	<b>12,052.5</b>	<b>12,007.3</b>	<b>0.4</b>	<b>100.0%</b>

**MDT Landed Weight**

2017	Jan-17	Feb-17	Mar-17	Apr-17	May-17	Jun-17	Jul-17	Aug-17	Sep-17	Oct-17	Nov-17	Dec-17	2017 Total
American	23,700,400	22,025,400	24,164,400	0	0	0	0	0	0	0	0	0	69,890,200
Delta	13,578,000	13,959,800	17,238,700	0	0	0	0	0	0	0	0	0	44,776,500
United	8,944,302	8,086,238	10,396,999	0	0	0	0	0	0	0	0	0	27,427,539
Allegiant	5,062,470	4,769,980	6,312,574	0	0	0	0	0	0	0	0	0	16,145,024
Air Canada	780,200	697,200	796,800	0	0	0	0	0	0	0	0	0	2,274,200
Southern	0	0	0	0	0	0	0	0	0	0	0	0	0
Charters	2,714,481	0	0	0	0	0	0	0	0	0	0	0	2,714,481
Diversions	1,563,607	1,921,857	1,229,450	0	0	0	0	0	0	0	0	0	4,714,914
Cargo	28,265,600	26,397,580	30,000,860	0	0	0	0	0	0	0	0	0	84,664,040
<b>Total</b>	<b>84,609,060</b>	<b>77,858,055</b>	<b>90,139,783</b>	<b>0</b>	<b>0</b>	<b>0</b>	<b>0</b>	<b>0</b>	<b>0</b>	<b>0</b>	<b>0</b>	<b>0</b>	<b>252,606,898</b>
vs. 2016	14.3%	4.6%	3.2%										

2016	Jan-16	Feb-16	Mar-16	Apr-16	May-16	Jun-16	Jul-16	Aug-16	Sep-16	Oct-16	Nov-16	Dec-16	2016 Total
American	20,859,576	21,382,576	24,255,300	24,070,500	25,448,050	24,470,200	24,721,300	25,914,000	25,395,950	25,884,800	24,214,100	22,361,400	288,977,752
Delta	12,743,368	13,287,137	16,702,949	17,209,200	16,136,225	16,327,343	15,287,788	15,568,335	15,388,200	17,607,100	15,788,800	12,857,700	184,904,145
United	8,701,254	8,986,275	9,846,738	10,888,744	13,837,345	13,938,699	13,122,801	13,716,282	13,965,384	14,178,954	13,473,679	11,124,194	145,780,349
Allegiant	3,932,980	4,496,376	6,884,064	5,067,866	5,644,752	6,369,232	6,785,034	6,068,648	4,627,782	4,649,366	4,791,564	5,317,942	64,635,606
Air Canada	647,400	713,800	730,400	796,800	996,000	962,800	1,029,200	996,000	929,600	979,400	830,000	730,400	10,341,800
Southern	0	0	0	0	0	0	0	0	0	17,000	331,500	8,500	357,000
Charters	630,000	0	0	252,000	252,000	0	0	146,000	320,000	279,000	0	2,714,481	4,593,481
Diversions	587,797	2,469,500	770,200	1,054,998	74,950	1,449,452	3,378,711	706,650	110,000	522,057	349,000	356,450	11,829,765
Cargo	25,942,940	23,112,080	28,124,960	27,101,240	26,042,100	27,665,040	28,869,240	28,636,540	29,820,980	27,687,500	28,773,080	61,539,640	363,315,340
<b>Total</b>	<b>74,045,315</b>	<b>74,447,744</b>	<b>87,314,611</b>	<b>86,441,348</b>	<b>88,431,422</b>	<b>91,182,766</b>	<b>93,194,074</b>	<b>91,752,455</b>	<b>90,557,896</b>	<b>91,805,177</b>	<b>88,551,723</b>	<b>117,010,707</b>	<b>1,074,735,238</b>

	Jan	Feb	Mar	Apr	May	Jun	Jul	Aug	Sep	Oct	Nov	Dec	Totals
2016 Actual	74,045,315	74,447,744	87,314,611	86,441,348	88,431,422	91,182,766	93,194,074	91,752,455	90,557,896	91,805,177	88,551,723	117,010,707	1,074,735,238
2017 Actual	84,609,060	77,858,055	90,139,783										252,606,898
2017 Forecast	77,207,641	72,070,498	83,668,449	85,411,903	86,821,351	85,394,973	86,546,516	86,279,422	82,002,428	87,501,296	82,065,349	98,076,807	1,013,046,633
vs. Forecast	9.6%	8.0%	7.7%										

