

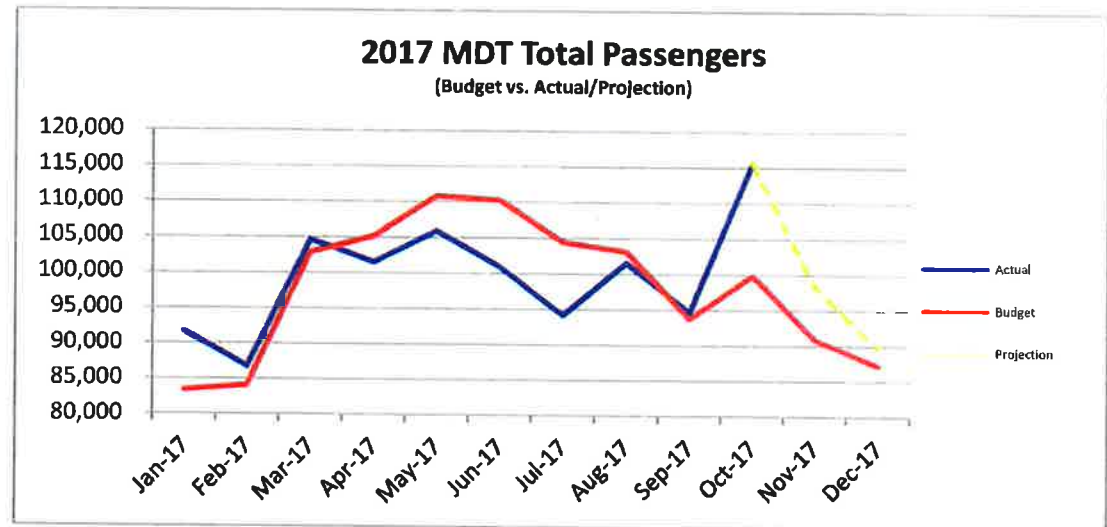
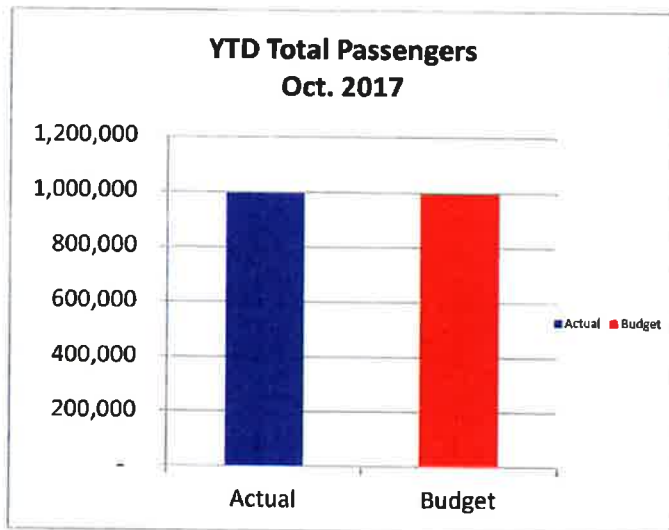
**Harrisburg International Airport Passenger Statistics
October-17**

Harrisburg Int'l Airport	Oct. 2017 Actual	Oct. 2017 Budget	% Change
Enplaned Passengers	58,815	49,938	17.8%
Total Passengers	115,776	99,875	15.9%
Departing Load Factor	83.6%	81.0%	2.6%
Departing Seat Capacity	70,365	61,676	14.1%
Total Cargo Tonnage	4,273		
Commercial Landed Weight	96,771,766	87,501,296	10.6%

2017 Actual YTD	2017 Budget YTD	% Change
501,686	498,881	0.6%
998,030	997,761	0.0%
81.8%	80.2%	1.5%
613,623	621,894	-1.3%
41,729		
884,169,477	832,904,476	6.2%

2017 Actual YTD	2016 Actual YTD	% Change
501,686	507,868	-1.2%
998,030	1,007,428	-0.9%
81.8%	82.3%	-0.6%
613,623	616,934	-0.5%
41,729	42,588	-2.0%
884,169,477	869,172,808	1.7%

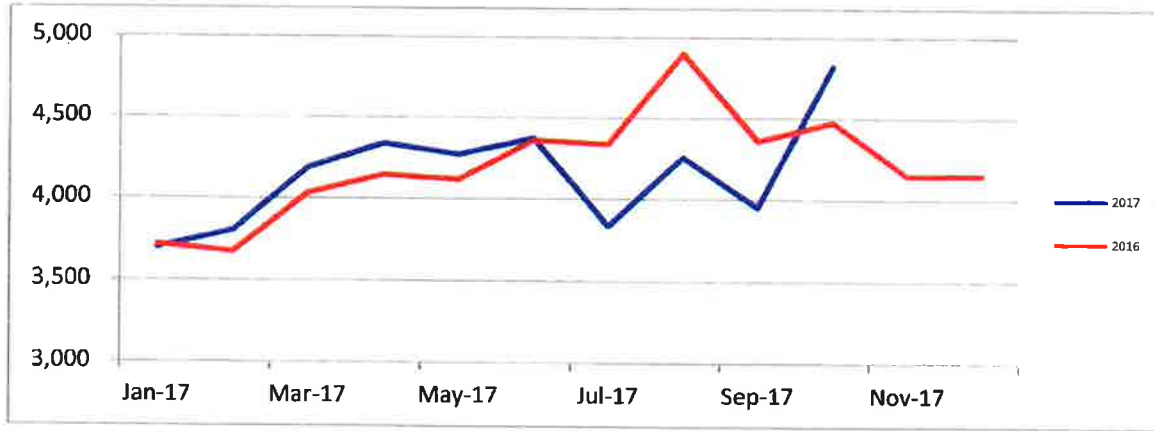
CY 2017 Projection
595,755
1,191,511
81.0%
735,522
1,052,848,214



**MDT and CXY Operations
October-17**

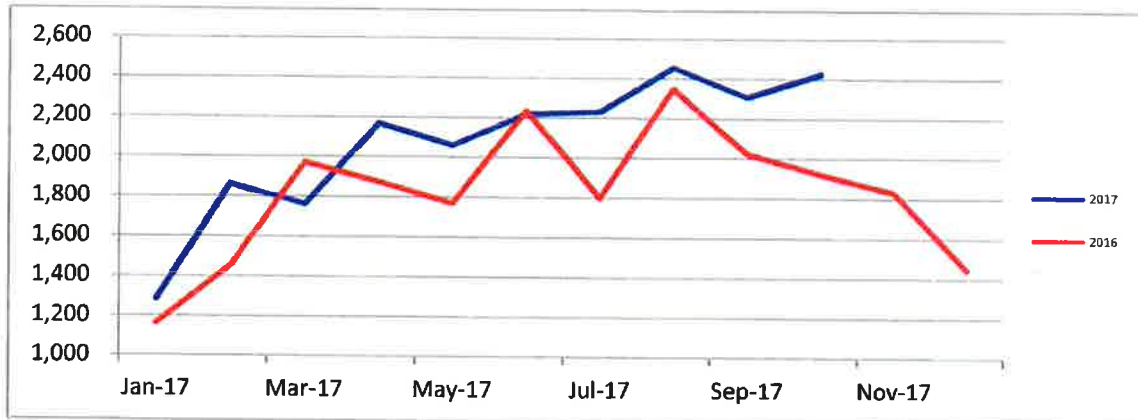
MDT Operations	Oct-17	Oct-17	Change
Commercial Air Carriers	2,644	2,624	0.8%
General Aviation	1,404	1,117	25.7%
Military	776	736	5.4%
Total MDT operations	4,824	4,477	7.8%

2017 YTD	2016 YTD	Change
24,212	24,705	-2.0%
10,989	9,623	14.2%
6,368	7,807	-18.4%
41,569	42,135	-1.3%



CXY Operations	Oct-17	Oct-17	Change
General Aviation	2,166	1,689	28.2%
Military	199	179	11.2%
Air Taxi	62	53	17.0%
Total CXY Operations	2,427	1,921	26.3%

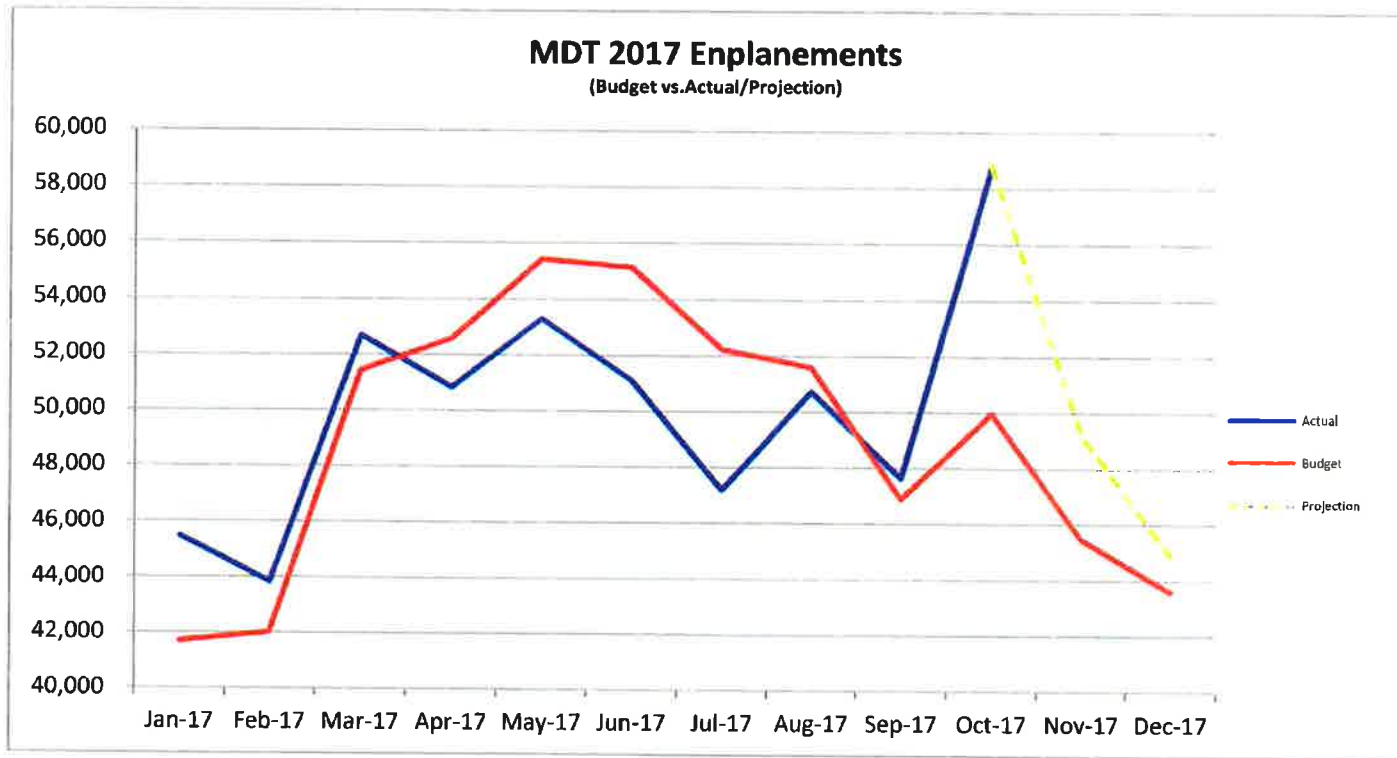
2017 YTD	2016 YTD	Change
18,260	15,600	17.1%
1,949	2,597	-25.0%
588	366	60.7%
20,797	18,563	12.0%





**Passenger Enplanement Report
October-17**

Enplaned	Actual		% Diff	Actual			Actual		Working		
	Oct.	Budget Oct.		YTD 2017	Budget YTD 2017	% Diff	YTD 2016	% Diff	Budget CY 2017	Projection CY 2017	% Diff
AA	22,895	21,511	6.4%	203,115	209,068	-2.8%	201,012	1.0%	245,529	245,392	-0.1%
DL	16,071	12,187	31.9%	137,470	127,543	7.8%	135,237	1.7%	150,233	161,215	7.3%
UA	12,846	10,381	23.7%	96,688	98,825	-2.2%	106,395	-9.1%	117,221	112,707	-3.9%
G4	6,158	5,120	20.3%	57,603	55,690	3.4%	59,213	-2.7%	66,099	68,510	3.6%
AC	821	526	56.2%	6,673	5,686	17.4%	5,804	15.0%	6,429	7,852	22.1%
SO	24	214	-88.8%	80	2,069	-96.1%	13	515.4%	2,424	80	-96.7%
Total	58,815	49,938	17.8%	501,629	498,881	0.6%	507,674	-1.2%	587,934	595,755	1.3%





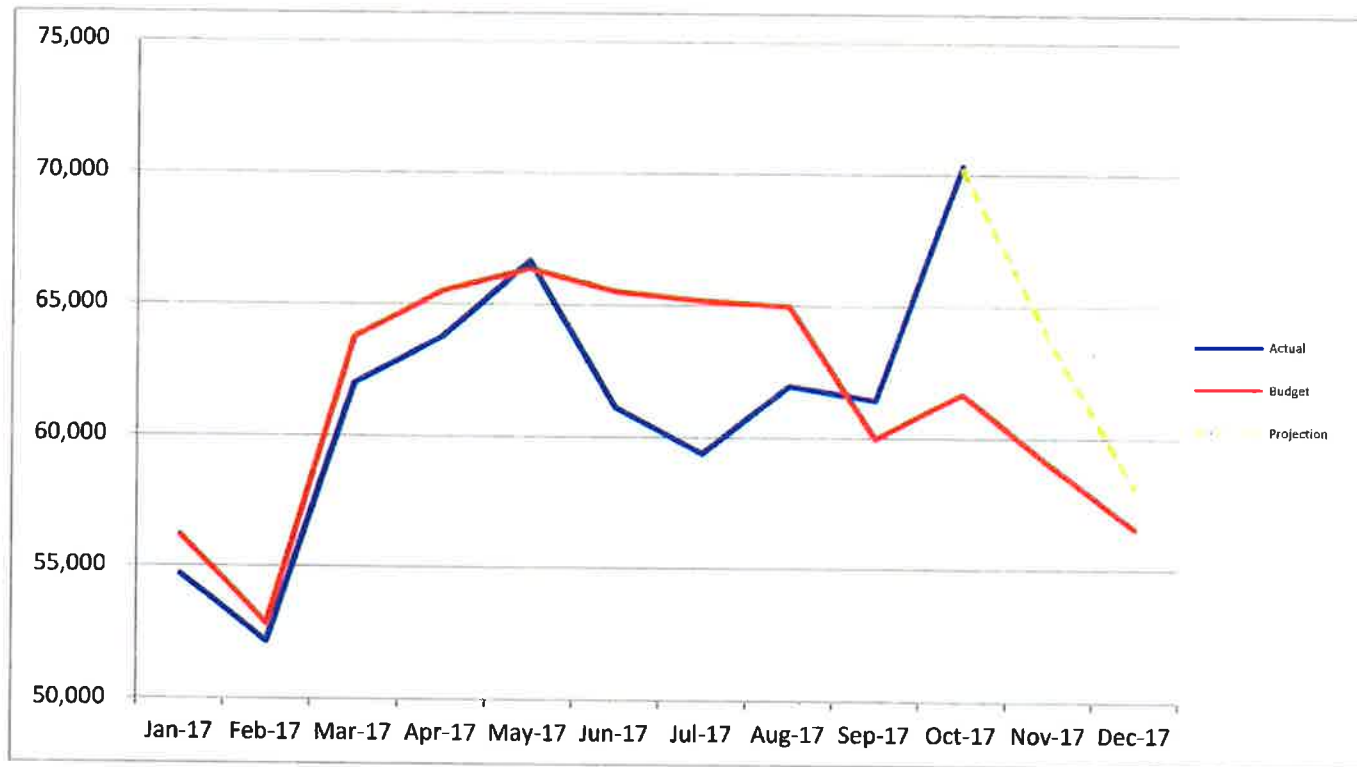
Airline Departing Seat Report October-17

Dep. Seats	Actual Oct.	Budget Oct.	% Diff
AA	27,371	25,554	7.1%
DL	18,871	15,201	24.1%
UA	14,970	13,866	8.0%
G4	7,441	5,700	30.5%
AC	1,544	922	67.5%
SO	168	433	-61.2%
Total	70,365	61,676	14.1%

Actual YTD 2017	Budget YTD 2017	% Diff
254,669	256,195	-0.6%
159,976	153,385	4.3%
119,540	132,085	-9.5%
67,662	65,730	2.9%
11,408	10,212	11.7%
368	4,287	-91.4%
613,623	621,894	-1.3%

Actual YTD 2016	% Diff
250,215	1.8%
160,060	-0.1%
130,677	-8.5%
66,442	1.8%
9,522	19.8%
18	1944.4%
616,934	-0.5%

Budget CY 2017	Working Projection CY 2017	% Diff
303,321	309,032	1.9%
182,191	190,156	4.4%
157,399	141,903	-9.8%
77,610	80,118	3.2%
11,808	13,943	18.1%
5,146	368	-92.8%
737,474	735,522	-0.3%





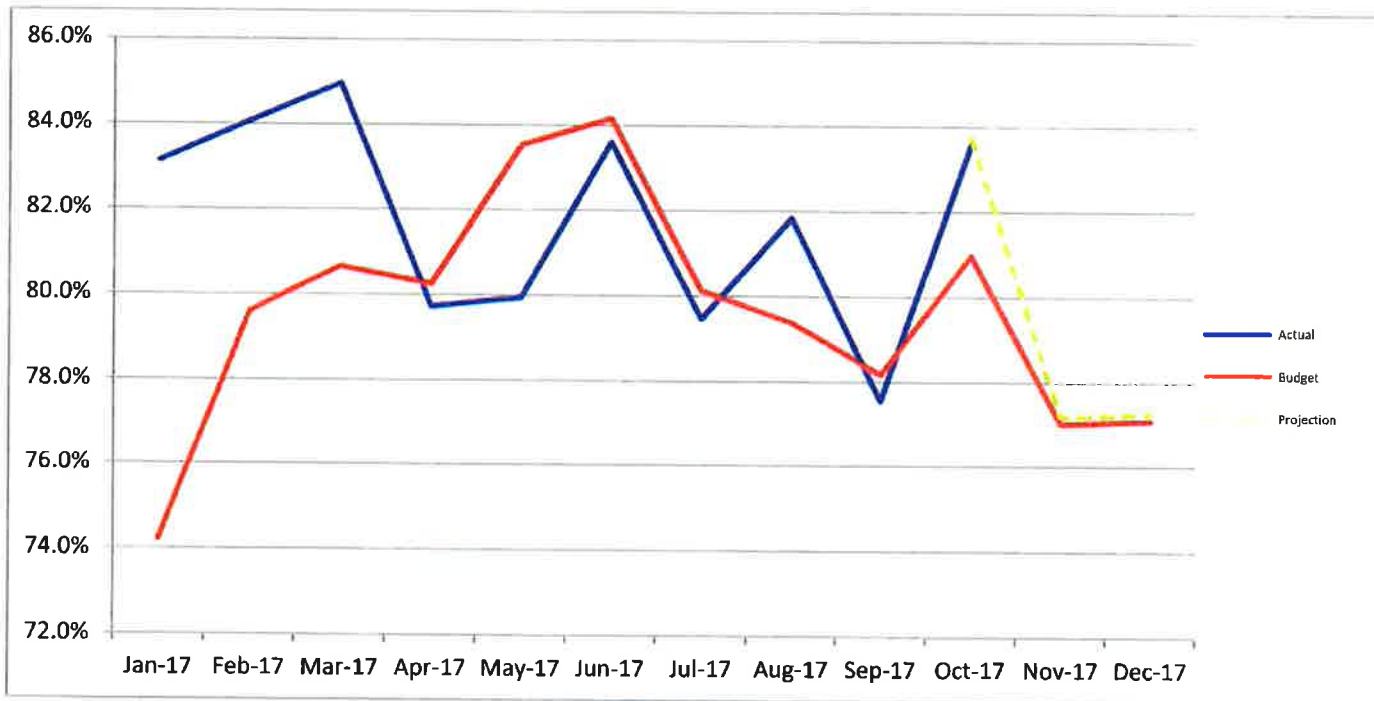
Airline Departing Load Factor Report October-17

Dep. LF	Actual Oct.	Budget Oct.	% Diff
AA	83.6%	84.2%	-0.5%
DL	85.2%	80.2%	5.0%
UA	85.8%	74.9%	10.9%
G4	82.8%	89.8%	-7.1%
AC	53.2%	57.0%	-3.8%
SO	14.3%	49.4%	-35.2%
Total	83.6%	81.0%	2.6%

Actual YTD 2017	Budget YTD 2017	% Diff
79.8%	81.6%	-1.8%
85.9%	83.2%	2.8%
80.9%	74.8%	6.1%
85.1%	84.7%	0.4%
58.5%	55.7%	2.8%
21.7%	48.3%	-26.5%
81.7%	80.2%	1.5%

Actual YTD 2016	% Diff
80.3%	-0.6%
84.5%	1.4%
81.4%	-0.5%
89.1%	-4.0%
61.0%	-2.5%
72.2%	-50.5%
82.3%	-0.5%

Budget CY 2017	Working Projection CY 2017	% Diff
80.9%	79.4%	-1.5%
82.5%	84.8%	2.3%
74.5%	79.4%	5.0%
85.2%	85.5%	0.3%
54.4%	56.3%	1.9%
47.1%	21.7%	-25.4%
79.7%	81.0%	1.3%





Airline Landed Weight Report October-17

Landed Weight	Actual	Budget	% Diff	Actual	Budget	% Diff	Actual	% Diff	Budget	Working	% Diff
	Oct.	Oct.		YTD 2017	YTD 2017		YTD 2016		CY 2017	Projection	
AA	26,378,704	24,915,723	5.9%	246,073,554	247,513,952	-0.6%	242,402,252	1.5%	292,940,084	299,252,227	2.2%
DL	17,724,600	14,921,962	18.8%	155,872,500	151,599,183	2.8%	156,257,645	-0.2%	179,958,220	185,177,826	2.9%
UA	14,955,653	13,341,462	12.1%	117,307,904	120,952,060	-3.0%	121,182,476	-3.2%	145,326,145	139,404,205	-4.1%
G4	6,073,548	4,706,403	29.0%	55,833,214	54,069,938	3.3%	54,526,100	2.4%	63,892,309	65,991,523	3.3%
AC	1,424,800	850,252	67.6%	10,521,600	9,418,176	11.7%	8,781,400	19.8%	10,889,766	12,859,793	18.1%
SO	178,500	460,488	-61.2%	391,000	4,554,640	-91.4%	17,000	2200.0%	5,467,243	391,000	-92.8%
Charters	-	-		3,389,981	-	100.0%	1,879,000	80.4%	-	-	
Diversions	1,019,361	-		14,784,424	-	100.0%	11,124,315	32.9%	-	-	
Cargo	29,016,600	28,305,007	2.5%	279,995,300	244,796,527	14.4%	273,002,620	2.6%	314,572,867	349,771,640	11.2%
Total	96,771,766	87,501,296	10.6%	884,169,477	832,904,476	6.2%	869,172,808	1.7%	1,013,046,633	1,052,848,214	3.9%

