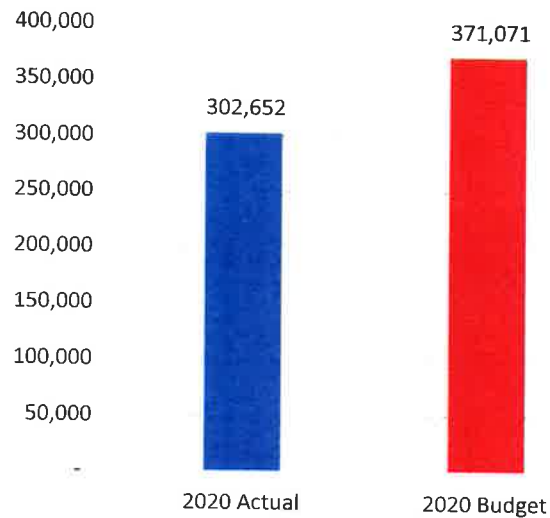


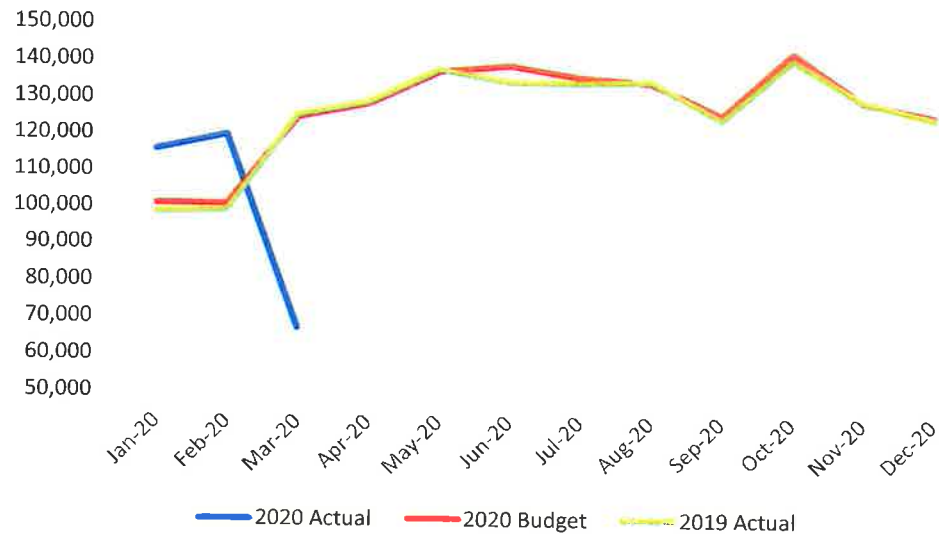
**Harrisburg International Airport Passenger Statistics
March-20**

Harrisburg Int'l Airport	Mar-20 Actual	Mar-20 Budget	% Change	2020 Actual YTD	2020 Budget YTD	% Change	2020 Actual YTD	2019 Actual YTD	% Change	CY 2020 Budget
Departures	860	1,050	-18.1%	2,738	2,892	-5.3%	2,738	2,523	8.5%	11,674
Enplaned Passengers	34,063	68,936	-50.6%	153,485	185,536	-17.3%	153,485	163,029	-5.9%	761,740
Total Passengers	67,261	137,873	-51.2%	302,652	371,071	-18.4%	302,652	322,733	-6.2%	1,523,480
Dep. Load Factor	52.6%	87.3%	-34.8%	72.6%	83.2%	-10.7%	72.6%	86.9%	-14.4%	83.3%
Dep. Seat Capacity	64,796	81,013	-20.0%	211,517	222,918	-5.1%	211,517	187,563	12.8%	914,032
Total Cargo Tonnage	4,199			12,264			12,264	13,795	-11.1%	
Landed Weight	94,912,853	106,791,854	-11.1%	294,550,288	301,259,671	-2.2%	294,550,288	289,003,031	1.9%	1,259,487,442

March 2020 - YTD



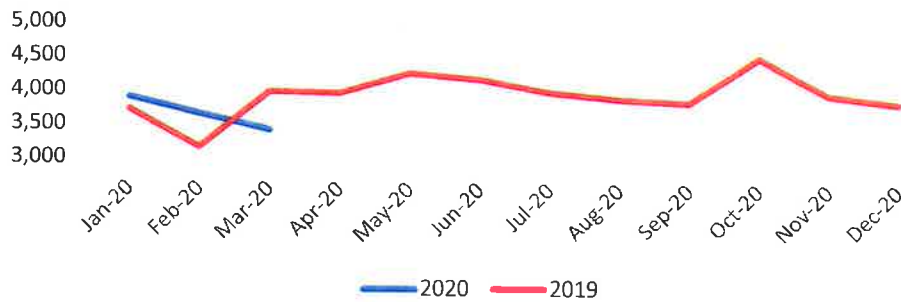
MDT Total Passengers



**MDT and CXY Operations
March-20**

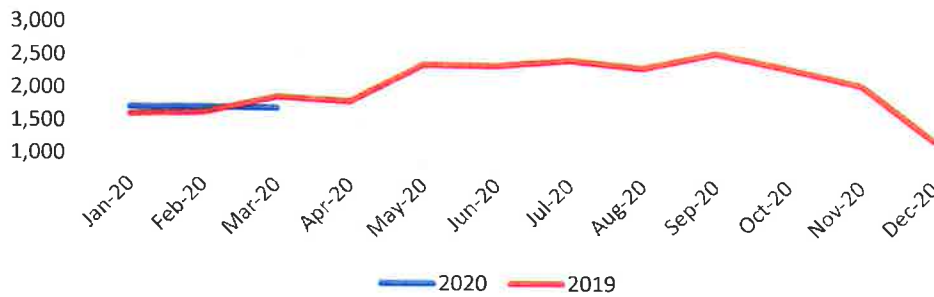
<u>MDT Operations</u>	<u>Mar-20</u>	<u>Mar-19</u>	<u>Change</u>	<u>2020 TD</u>	<u>2019 YTD</u>	<u>Change</u>
Commercial Air Carriers	2,305	2,584	-10.8%	7,248	7,006	3.5%
General Aviation	640	787	-18.7%	2,220	2,237	-0.8%
Military	489	623	-21.5%	1,536	1,657	-7.3%
Total MDT operations	3,434	3,994	-14.0%	11,004	10,900	1.0%

MDT Operations By Month



<u>CXY Operations</u>	<u>Mar-20</u>	<u>Mar-19</u>	<u>Change</u>	<u>2020 TD</u>	<u>2019 YTD</u>	<u>Change</u>
General Aviation	1,567	1,683	-6.9%	4,718	4,675	0.9%
Military	101	168	-39.9%	307	358	-14.2%
Air Taxi	37	23	60.9%	108	87	24.1%
Total CXY Operations	1,705	1,874	-9.0%	5,133	5,120	0.3%

CXY Operations By Month



**Passenger Enplanement Report
March-20**

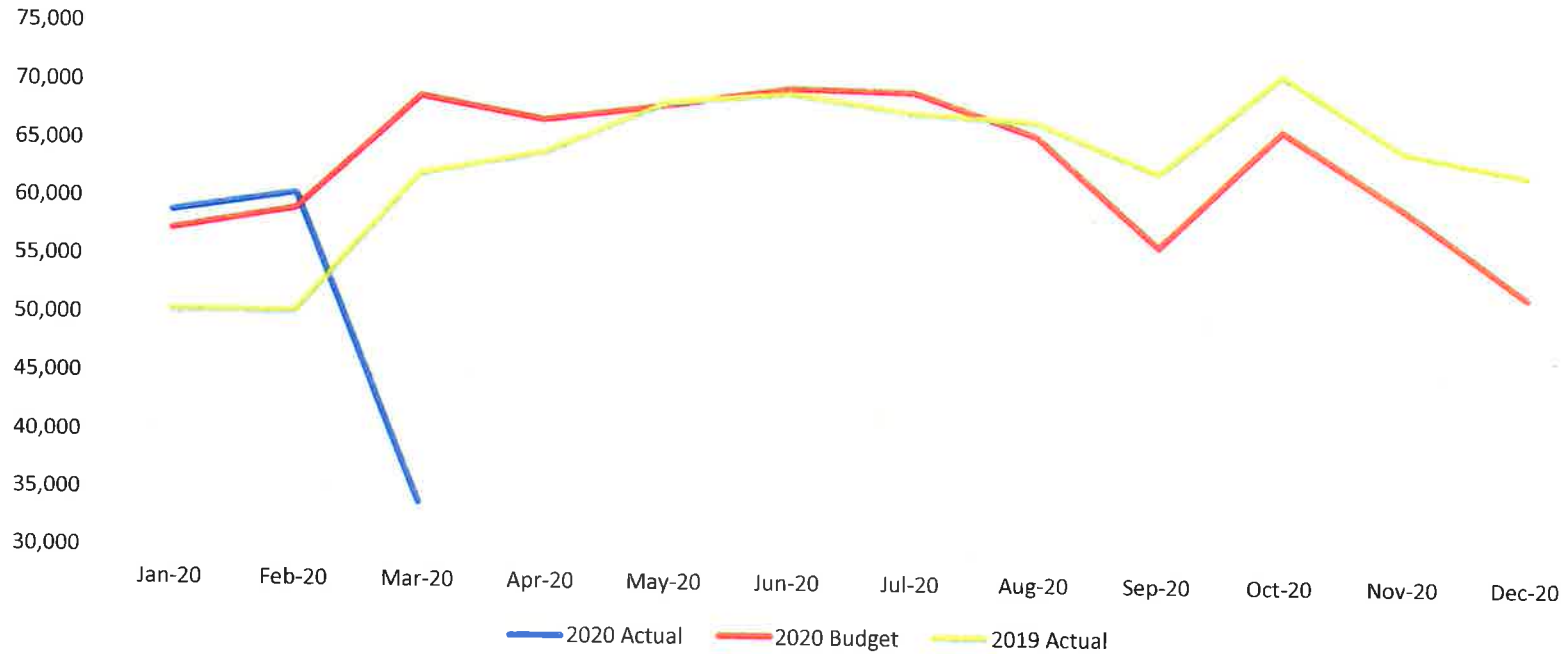
Enplaned	Actual Mar.	Budget Mar.	% Diff
AA	17,229	32,813	-47.5%
DL	5,999	12,682	-52.7%
UA	3,692	9,436	-60.9%
G4	5,771	11,292	-48.9%
F9	1,372	2,713	-49.4%
Other/Chtr	-	-	-
Total	34,063	68,936	-50.6%

Actual YTD 2020	Budget YTD 2020	% Diff
72,303	88,945	-18.7%
29,866	34,081	-12.4%
18,945	23,780	-20.3%
25,243	30,430	-17.0%
7,128	8,299	-14.1%
-	-	-
153,485	185,536	-17.3%

Actual YTD 2019	% Diff
71,753	0.8%
36,876	-19.0%
24,169	-21.6%
22,939	10.0%
0	0.0%
7,292	-100.0%
163,029	-5.9%

Budget CY 2020	Working Projection CY 2020	% Diff
342,832	313,054	-8.7%
149,111	160,931	7.9%
119,895	130,112	8.5%
113,415	110,374	-2.7%
36,487	37,911	100.0%
761,740	752,383	-1.2%

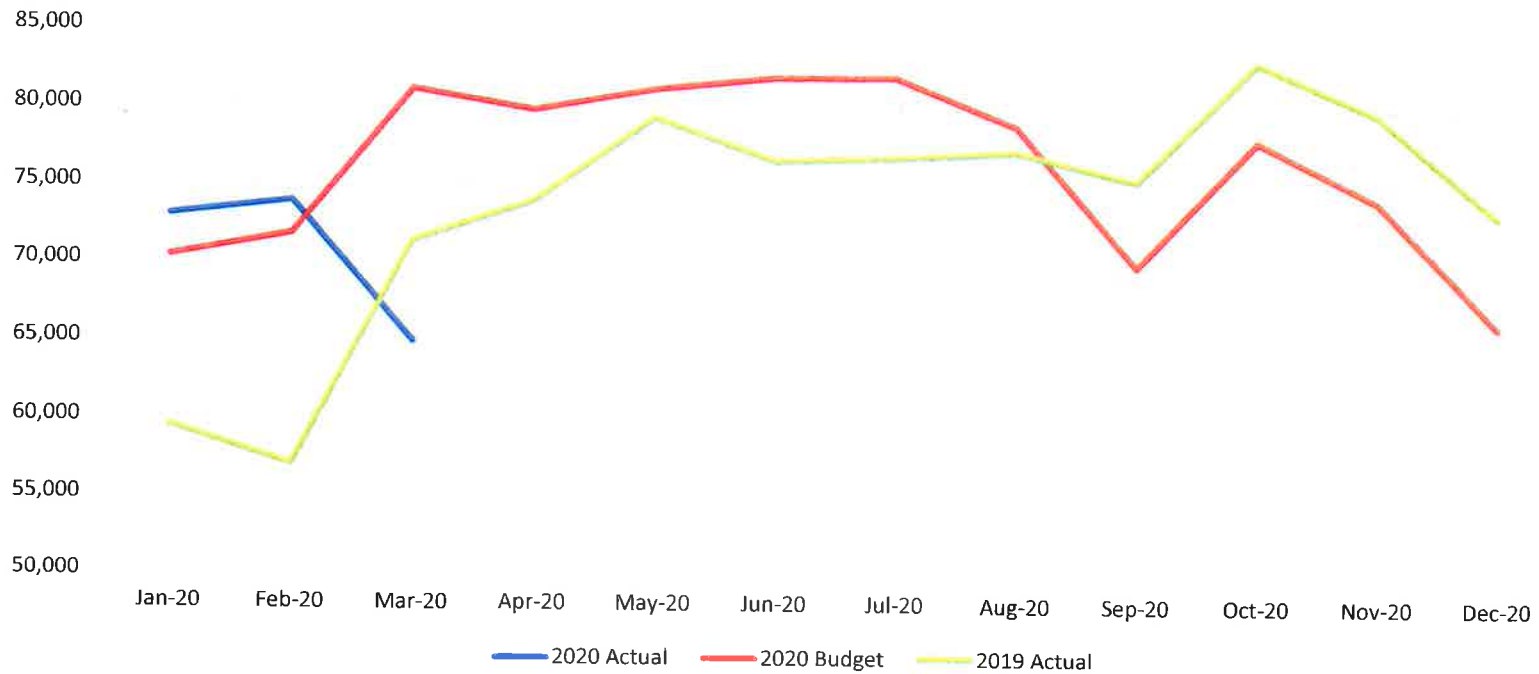
MDT Enplanements



Airline Departing Seat Report March-20

Dep. Seats	Actual	Budget	% Diff	Actual	Budget	% Diff	Actual	% Diff	Budget	Working	% Diff
	Mar.	Mar.		YTD 2020	YTD 2020		YTD 2019		CY 2020	Projection	
AA	31,877	37,945	-16.0%	99,585	104,844	-5.0%	82,619	20.5%	406,267	362,835	-10.7%
DL	12,038	15,017	-19.8%	39,786	41,531	-4.2%	42,026	-5.3%	177,817	180,517	1.5%
UA	8,520	11,718	-27.3%	28,670	31,364	-8.6%	29,682	-3.4%	151,100	156,938	3.9%
G4	9,831	13,250	-25.8%	33,426	35,749	-6.5%	26,346	26.9%	136,478	134,056	-1.8%
F9	2,530	3,083	-17.9%	10,050	9,430	6.6%	0	100.0%	42,372	44,914	100.0%
Other/Chtr	-	-	-	-	-	-	6,890	-100.0%	-	-	-
Total	64,796	81,013	-20.0%	211,517	222,918	-5.1%	187,563	12.8%	914,032	879,259	-3.8%

MDT Departng Seat Capacity



Airline Departing Load Factor Report March-20

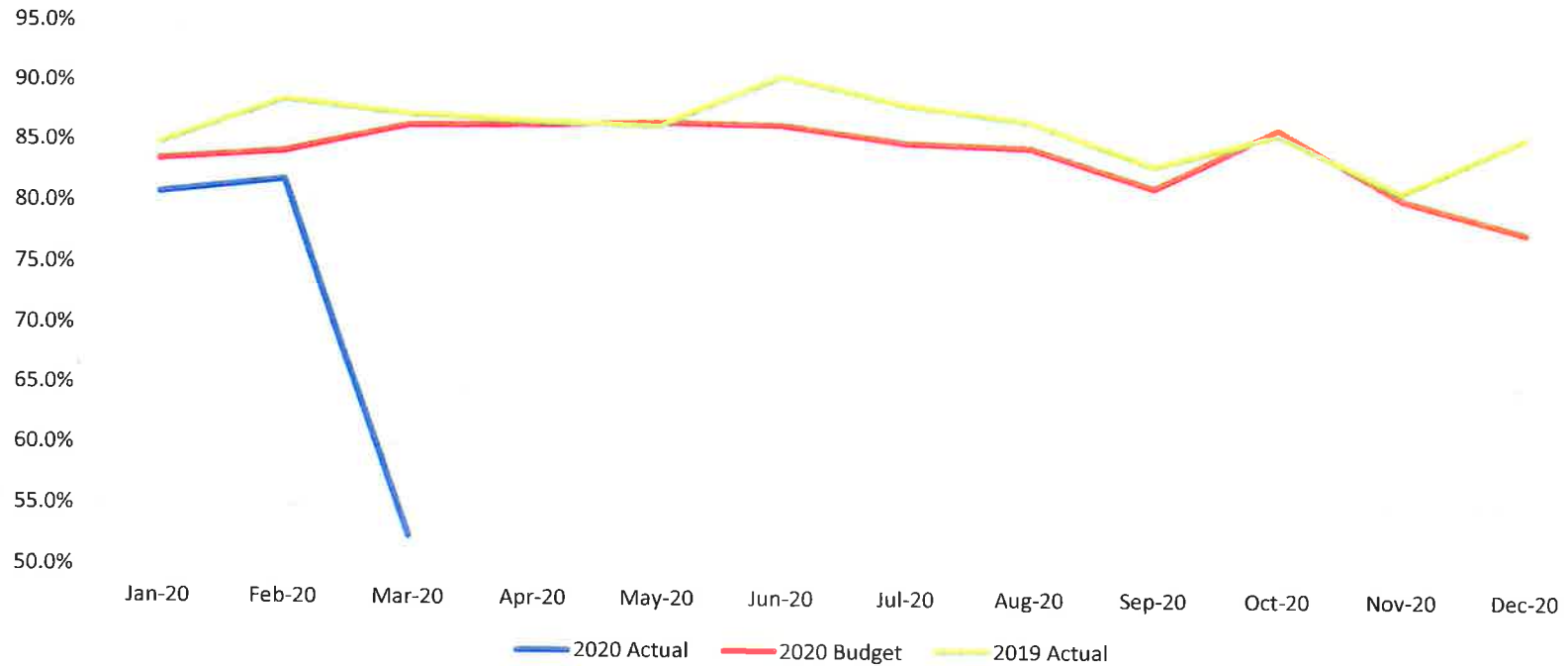
Dep. LF	Actual Mar.	Budget Mar.	% Diff
AA	54.0%	86.5%	-32.4%
DL	49.8%	84.4%	-34.6%
UA	43.3%	80.5%	-37.2%
G4	58.7%	85.2%	-26.5%
F9	54.2%	88.0%	-33.8%
Total	52.6%	85.1%	-32.5%

Actual YTD 2020	Budget YTD 2020	% Diff
72.6%	84.8%	-12.2%
75.1%	82.1%	-7.0%
66.1%	75.8%	-9.7%
75.5%	85.1%	-9.6%
70.9%	88.0%	-17.1%
72.6%	83.2%	-10.7%

Actual YTD 2019	% Diff
86.8%	-14.2%
87.7%	-12.7%
81.4%	-15.3%
87.1%	-11.5%
86.9%	-14.4%

Budget CY 2020	Working Projection CY 2020	% Diff
84.4%	86.3%	-1.9%
83.9%	89.1%	-5.3%
79.3%	82.9%	-3.6%
83.1%	82.3%	0.8%
86.1%	84.4%	1.7%
83.3%	85.6%	-2.2%

MDT Departing Load Factor



Airline Landed Weight Report March-20

Landed Weight	Actual	Budget	% Diff	Actual	Budget	% Diff	Actual	% Diff	Budget	Working	% Diff
	Mar.	Mar.		YTD 2020	YTD 2020		YTD 2019		CY 2020	Projection	
AA	29,944,722	34,862,051	-14.1%	88,503,408	96,947,711	-8.7%	79,653,830	11.1%	381,098,738	345,161,117	10.4%
DL	13,085,000	14,731,470	-11.2%	43,433,000	41,309,970	5.1%	41,412,700	4.9%	177,052,005	179,035,753	-1.1%
UA	9,296,000	12,361,385	-24.8%	30,784,000	33,261,484	-7.4%	28,376,858	8.5%	154,058,334	153,028,212	0.7%
G4	8,114,083	11,037,671	-26.5%	27,283,226	29,461,044	-7.4%	21,331,871	27.9%	112,213,583	108,730,457	3.2%
F9	1,886,698	2,356,932	-20.0%	7,542,390	7,209,439	4.6%			35,076,692	35,822,098	-2.1%
Charters							2,374,100	-100.0%			
Diversions	567,450	902,898	-37.2%	1,670,704	2,778,383	-39.9%	2,804,748	-40.4%	14,714,419	19,314,647	-23.8%
Cargo	32,018,900	30,539,447	4.8%	95,333,560	90,291,639	5.6%	107,616,080	-11.4%	385,273,672	413,291,426	-6.8%
Total	94,912,853	106,791,854	-11.1%	294,550,288	301,259,671	-2.2%	289,003,031	1.9%	1,259,487,442	1,254,383,709	0.4%

MDT Landed Weight

