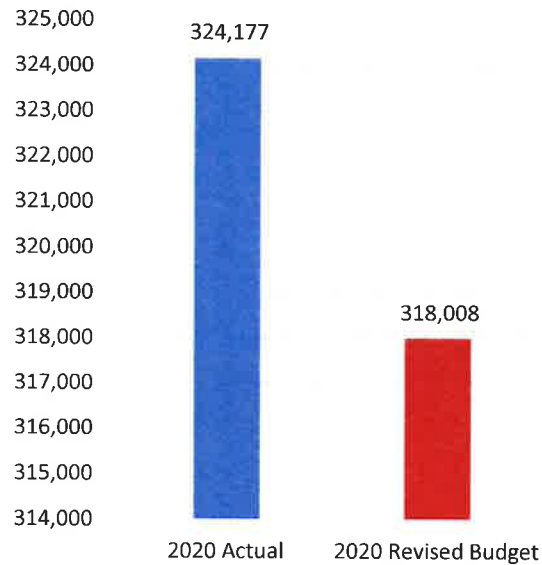


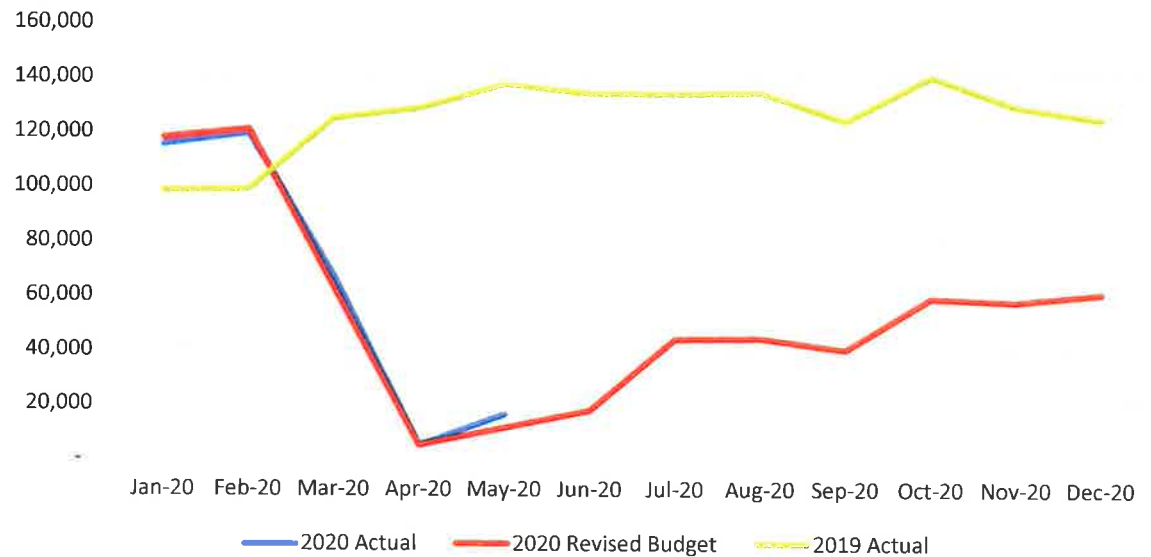
**Harrisburg International Airport Passenger Statistics
May-20**

Harrisburg Int'l Airport	May-20 Actual	May-20 Rev. Budget	% Change	2020 Actual YTD	2020 Rev. Budget YTD	% Change	2020 Actual YTD	2019 Actual YTD	% Change	CY 2020 Revised Proj.
Departures	304	309	-1.6%	3,390	3,395	-0.1%	3,390	4,450	-23.8%	7,070
Enplaned Passengers	8,499	5,617	51.3%	161,886	159,004	1.8%	161,886	295,698	-45.3%	321,349
Total Passengers	16,495	11,234	46.8%	324,177	318,008	1.9%	324,177	589,184	-45.0%	642,698
Departing Load Factor	40.7%	26.5%	14.2%	62.7%	61.5%	1.2%	62.7%	86.8%	-24.1%	61.1%
Departing Seat Capacity	20,877	21,181	-1.4%	258,125	258,429	-0.1%	258,125	340,671	-24.2%	526,059
Total Cargo Tonnage	4,388			20,702			20,702	23,792	-13.0%	
Landed Weight	50,819,442	50,927,317	-0.2%	407,486,224	407,594,099	0.0%	407,486,224	507,835,426	-19.8%	902,027,210

May 2020



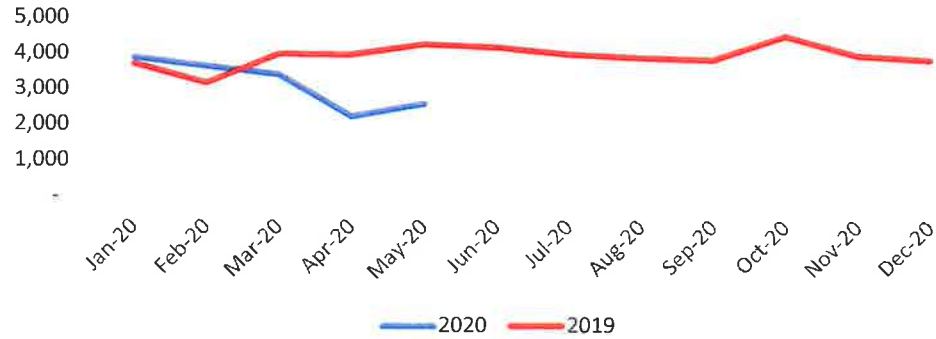
MDT 2020 Passengers vs 2019 and Revised budget



**MDT and CXY Operations
May-20**

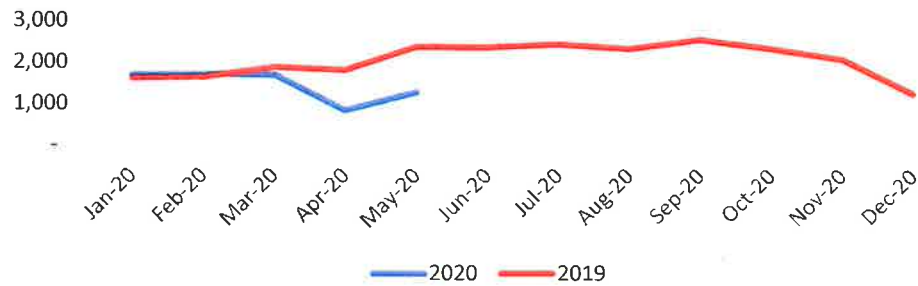
MDT Operations	May-20	May-19	Change	2020 YTD	2019 YTD	Change
Commercial Air Carriers	1,152	2,742	-58.0%	9,620	12,322	-21.9%
General Aviation	790	946	-16.5%	3,457	4,022	-14.0%
Military	671	589	13.9%	2,801	2,809	-0.3%
Total MDT operations	2,613	4,277	-38.9%	15,878	19,153	-17.1%

MDT 2020 Operations vs 2019



CXY Operations	May-20	May-19	Change	2020 YTD	2019 YTD	Change
General Aviation	1,236	2,198	-43.8%	6,776	8,532	-20.6%
Military	45	114	-60.5%	376	597	-37.0%
Air Taxi	13	60	-78.3%	129	173	-25.4%
Total CXY Operations	1,294	2,372	-45.4%	7,281	9,302	-21.7%

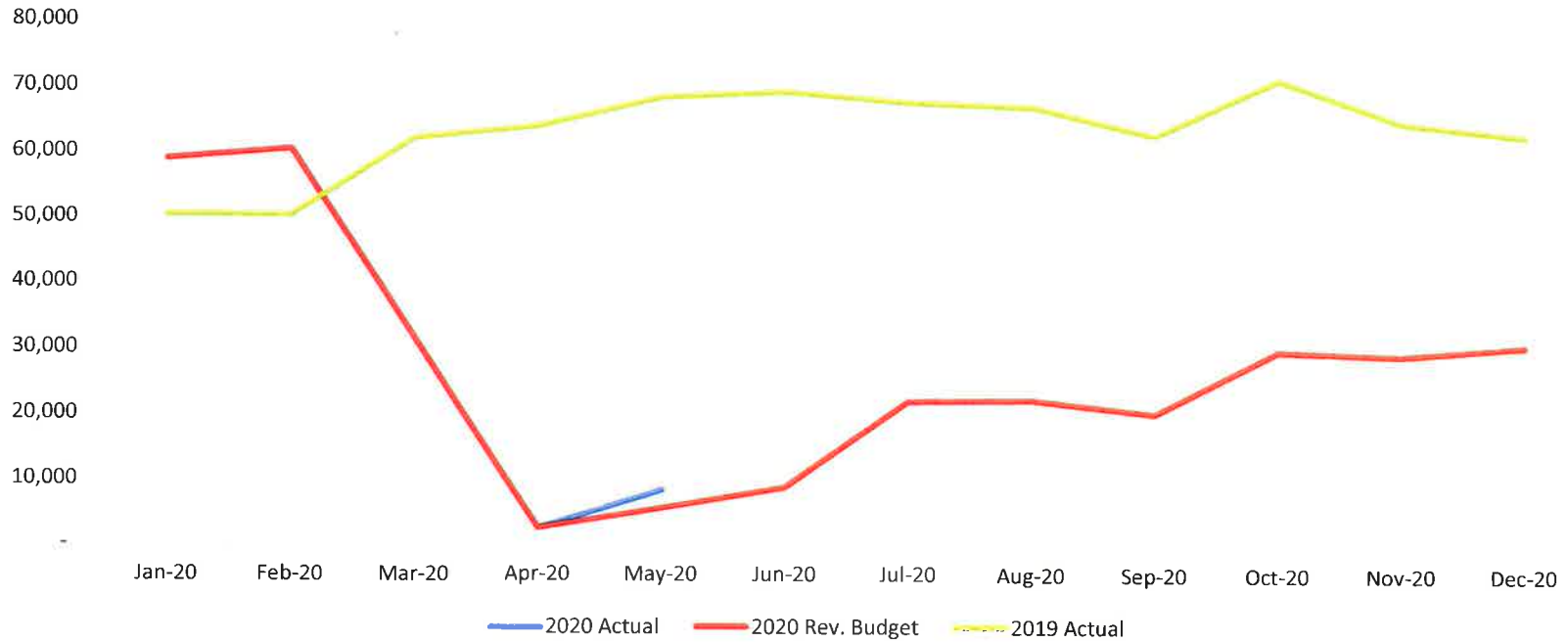
CXY Operatons vs 2019



**Passenger Enplanement Report
May-20**

Enplaned	Actual	Orig. Budget	% Diff	Actual	Rev. Budget	% Diff	Actual	% Diff	Revised Projection	
	May	May			YTD 2020				YTD 2020	YTD 2019
AA	4,267	31,274	-86.4%	75,737	74,274	2.0%	123,261	-38.6%	AA	135,830
DL	264	13,829	-98.1%	30,512	30,665	-0.5%	67,180	-54.6%	DL	63,107
UA	1,027	11,111	-90.8%	20,146	20,266	-0.6%	48,203	-58.2%	UA	46,454
G4	2,667	9,092	-70.7%	28,016	26,462	5.9%	44,017	-36.4%	G4	65,865
F9	274	3,003	-90.9%	7,475	7,337	1.9%	12,166	-38.6%	F9	10,094
Other/Chtr							871	-100.0%		
Total	8,499	68,309	-87.6%	161,886	159,004	1.8%	295,698	-45.3%	Total	321,349

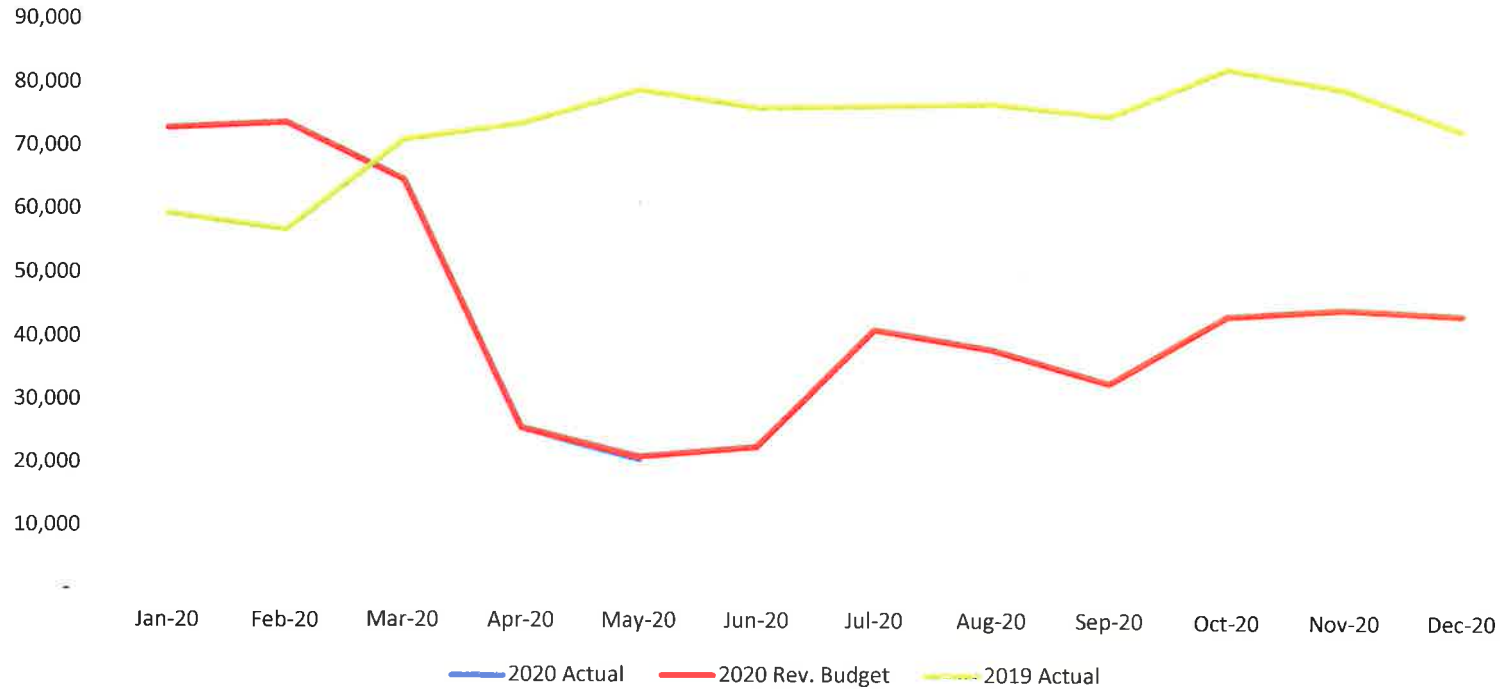
MDT 2020 Enplanements



Airline Departing Seat Report May-20

Dep. Seats	Orig. Budget			Rev. Budget			Actual		Revised Projection	
	Actual May	Budget May	% Diff	Actual YTD 2020	Budget YTD 2020	% Diff	Actual YTD 2019	% Diff	Dep. Seats	CY 2020
AA	9,352	36,037	-74.0%	126,422	126,431	0.0%	140,434	-10.0%	AA	229,535
DL	1,410	16,269	-91.3%	44,666	44,923	-0.6%	75,509	-40.8%	DL	92,737
UA	3,800	13,751	-72.4%	35,248	36,034	-2.2%	57,826	-39.0%	UA	80,007
G4	5,385	11,296	-52.3%	40,065	39,340	1.8%	52,932	-24.3%	G4	106,275
F9	930	3,703	-74.9%	11,724	11,701	0.2%	13,970	-16.1%	F9	17,504
Total	20,877	81,057	-74.2%	258,125	258,429	-0.1%	340,671	-24.2%	Total	526,059

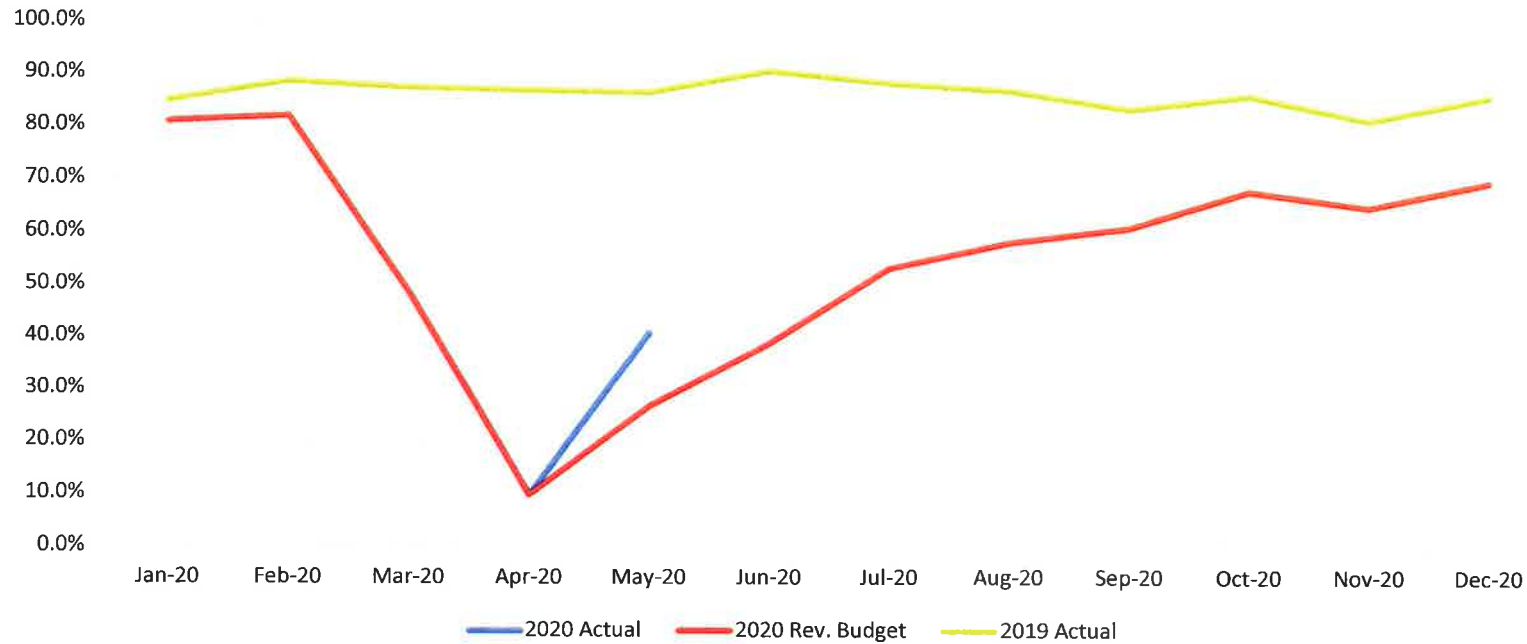
MDT 2020 Departing Seat Capacity



**Airline Departing Load Factor Report
May-20**

Dep. LF	Actual	Orig. Budget	% Diff	Actual	Rev. Budget	% Diff	Actual	% Diff	Revised Projection	
	May	May			YTD 2020				YTD 2020	YTD 2019
AA	45.6%	86.8%	-41.2%	59.9%	58.7%	1.2%	87.8%	-27.9%	AA	59.2%
DL	18.7%	85.0%	-66.3%	68.3%	68.3%	0.1%	89.0%	-20.7%	DL	68.0%
UA	27.0%	80.8%	-53.8%	57.2%	56.2%	0.9%	83.4%	-26.2%	UA	58.1%
G4	49.5%	80.5%	-31.0%	69.9%	67.3%	2.7%	83.2%	-13.2%	G4	63.2%
F9	29.5%	81.1%	-51.6%	63.8%	62.7%	1.1%	87.1%	-23.3%	F9	57.7%
Total	40.7%	84.3%	-43.6%	62.7%	61.5%	1.2%	86.8%	-24.1%	Total	61.3%

2020 MDT Dearting Load Factors



Airline Landed Weight Report May-20

Landed Weight	Actual	Orig. Budget	% Diff	Actual	Revised Budget	% Diff	Actual	% Diff	Landed Weight	Revised Projection
	May	May		YTD 2020	YTD 2020		YTD 2019			
AA	8,572,766	33,273,240	-74.2%	118,161,452	118,212,951	0.0%	135,274,194	-12.7%	AA	216,155,211
DL	1,499,000	16,058,835	-90.7%	48,663,000	48,737,650	-0.2%	74,403,400	-34.6%	DL	95,446,000
UA	4,194,000	13,946,669	-69.9%	37,912,500	38,720,270	-2.1%	55,722,654	-32.0%	UA	86,360,720
G4	4,377,266	9,191,271	-52.4%	32,664,696	32,030,792	2.0%	42,829,091	-23.7%	G4	85,966,149
F9	710,990	3,188,790	-77.7%	8,822,172	8,804,397	0.2%	10,950,334	-19.4%	F9	13,240,975
Charters							2,658,496	-100.0%	Charters	
Diversions	87,300	2,078,309	-95.8%	2,487,704	4,478,713	-44.5%	7,193,917	-65.4%	Diversions	13,018,989
Cargo	31,378,120	29,212,746	7.4%	158,774,700	156,609,326	1.4%	178,803,340	-11.2%	Cargo	391,839,166
Total	50,819,442	106,949,860	-52.5%	407,486,224	407,594,099	0.0%	507,835,426	-19.8%	Total	902,027,210

MDT 2020 Landed Weight

