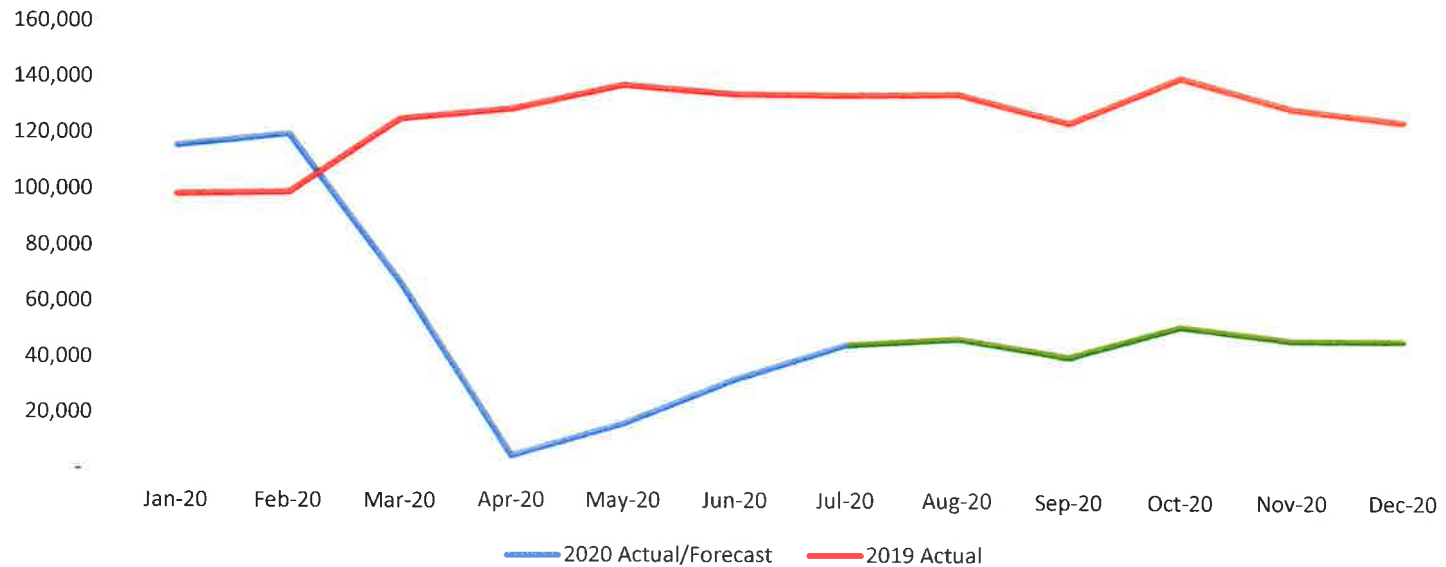


**Harrisburg International Airport Passenger Statistics
July-20**

Harrisburg Int'l Airport	Jul-20	Jul-20	%	2020 Revised			2020 Actual	2019 Actual	%	CY 2020 Revised Proj.
	Actual	Rev. Budget	Change	2020 Actual YTD	Budget YTD	% Change	YTD	YTD	Change	
Departures	561	576	-2.6%	4,288	4,296	-0.2%	4,288	6,393	-32.9%	7,170
Enplaned Passengers	22,680	22,697	-0.1%	201,113	195,888	2.7%	201,113	432,850	-53.5%	318,235
Total Passengers	45,151	45,393	-0.5%	401,725	391,776	2.5%	401,725	857,628	-53.2%	636,470
Departing Load Factor	52.3%	53.2%	-0.9%	61.6%	60.5%	1.1%	61.6%	87.6%	-26.1%	58.8%
Departing Seat Capacity	43,363	42,684	1.6%	326,716	323,987	0.8%	326,716	493,964	-33.9%	541,116
Total Cargo Tonnage	5,078			30,675			30,675	32,692	-6.2%	
Landed Weight	76,379,982	74,959,763	1.9%	540,261,862	535,845,918	0.8%	540,261,862	714,284,466	-24.4%	927,898,913

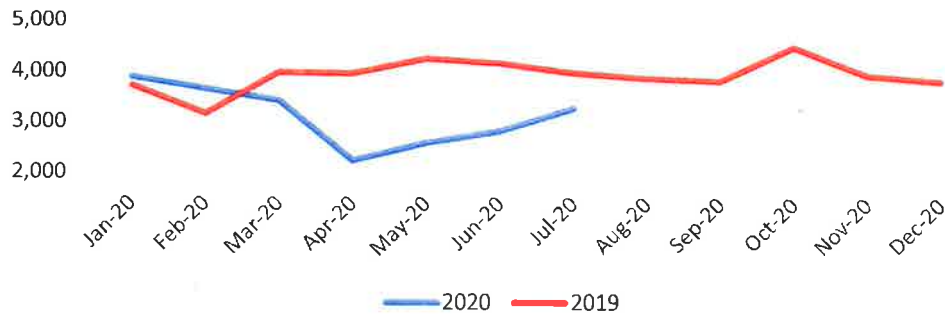
MDT Passengers



**MDT and CXY Operations
July-20**

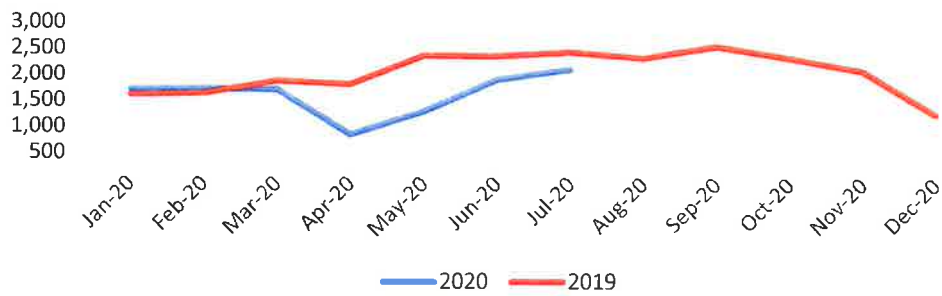
MDT Operations	Jul-20	Jul-19	Change	2020 YTD	2019 YTD	Change
Commercial Air Carriers	1,789	2,618	-31.7%	12,668	17,548	-27.8%
General Aviation	826	913	-9.5%	5,135	5,980	-14.1%
Military	684	463	47.7%	4,217	3,808	10.7%
Total MDT operations	3,299	3,994	-17.4%	22,020	27,336	-19.4%

MDT Operations



CXY Operations	Jul-20	Jul-19	Change	2020 YTD	2019 YTD	Change
General Aviation	2,053	2,257	-9.0%	10,653	12,925	-17.6%
Military	45	142	-68.3%	502	917	-45.3%
Air Taxi	21	47	-55.3%	154	271	-43.2%
Total CXY Operations	2,119	2,446	-13.4%	11,309	14,113	-19.9%

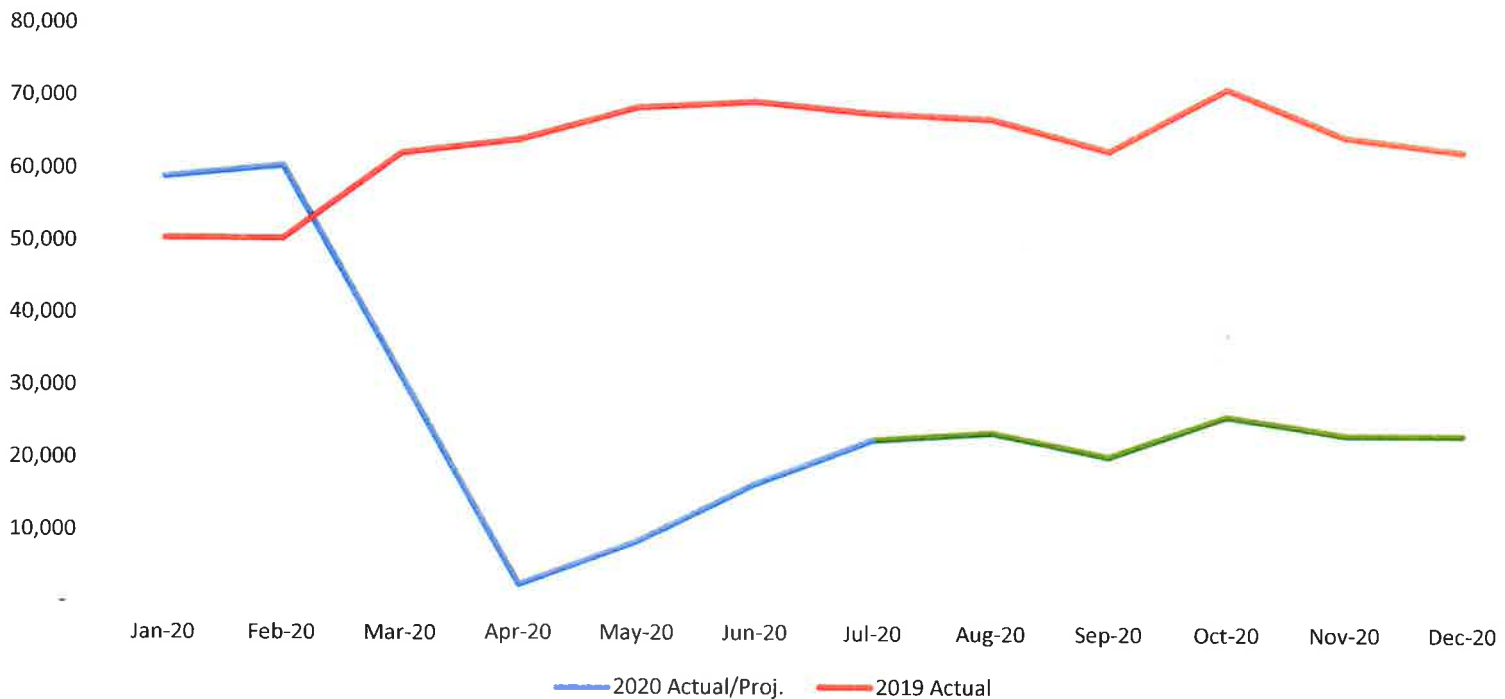
CXY Operations



Passenger Enplanement Report July-20

Enplaned	Actual	Budget	% Diff	Actual	Rev. Budget	% Diff	Actual	% Diff	Revised Projection	
	July	July		YTD 2020	YTD 2020		YTD 2019		Airline	CY 2020
AA	11,017	28,071	-60.8%	92,980	91,012	2.2%	174,848	-46.8%	AA	145,723
DL	2,996	14,260	-79.0%	34,082	33,467	1.8%	95,437	-64.3%	DL	55,796
UA	2,711	11,518	-76.5%	25,329	24,470	3.5%	73,433	-65.5%	UA	41,097
G4	5,491	11,826	-53.6%	40,172	38,731	3.7%	67,843	-40.8%	G4	65,296
F9	248	3,930	-93.7%	8,333	8,208	1.5%	20,418	-59.2%	F9	10,323
Total	22,463	69,605	-67.7%	200,896	195,888	2.6%	431,979	-53.5%	Total	318,235

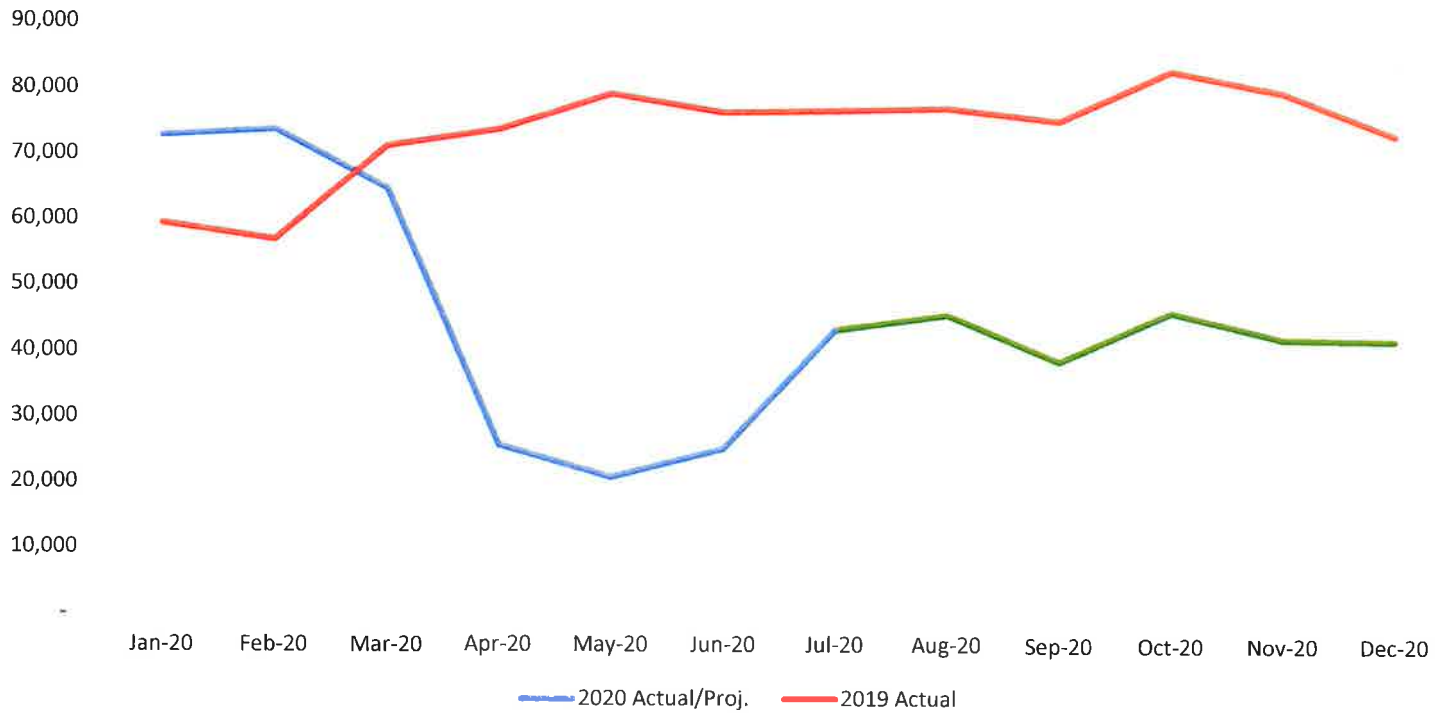
MDT Enplanements



Airline Departing Seat Report July-20

Enplaned	Actual	Budget	% Diff	Rev.			Actual		Revised	
	July	July		Actual	Budget	% Diff	YTD 2019	% Diff	Airline	Projection
				YTD 2020	YTD 2020	% Diff				CY 2020
AA	18,361	32,959	-44.3%	152,957	154,312	-0.9%	197,883	-22.7%	AA	248,105
DL	6,830	16,376	-58.3%	52,996	50,576	4.8%	106,012	-50.0%	DL	93,642
UA	5,050	14,241	-64.5%	44,548	44,704	-0.3%	86,026	-48.2%	UA	73,198
G4	12,402	13,882	-10.7%	62,841	61,022	3.0%	80,313	-21.8%	G4	108,705
F9	720	4,423	-83.7%	13,374	13,373	0.0%	23,730	-43.6%	F9	17,466
Total	43,363	81,881	-47.0%	326,716	323,987	0.8%	493,964	-33.9%	Total	541,116

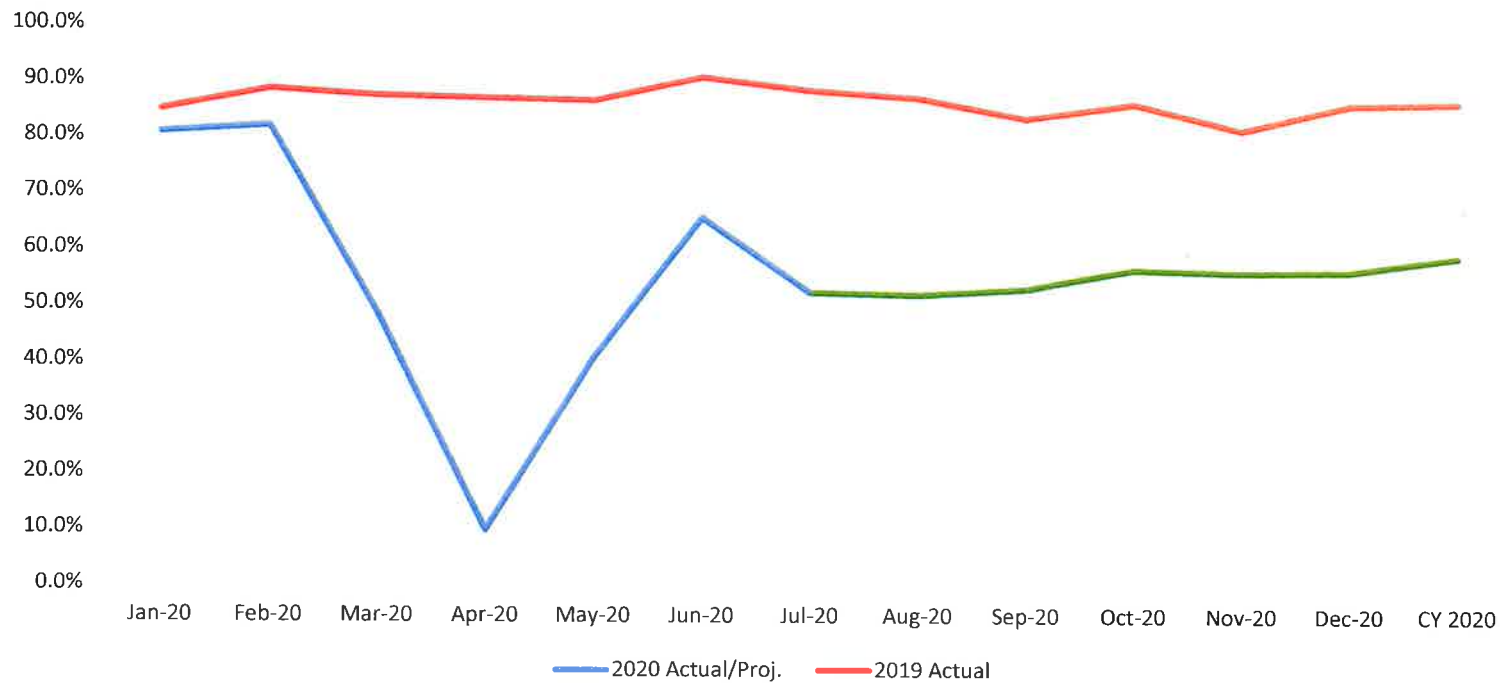
MDT Departing Seats



Airline Departing Load Factor Report July-20

Dep. Seats	Actual	Budget	% Diff	Actual	Rev.	% Diff	Actual	% Diff	Airline	Revised
	July	July			YTD 2020					YTD 2020
AA	60.0%	85.2%	-25.2%	60.8%	59.0%	1.8%	88.4%	-27.6%	AA	58.7%
DL	43.9%	87.1%	-43.2%	64.3%	66.2%	-1.9%	90.0%	-25.7%	DL	59.6%
UA	53.7%	80.9%	-27.2%	56.9%	54.7%	2.1%	85.4%	-28.5%	UA	56.1%
G4	44.3%	85.2%	-40.9%	63.9%	63.5%	0.5%	84.5%	-20.5%	G4	60.1%
F9	34.4%	88.9%	-54.4%	62.3%	61.4%	0.9%	86.0%	-23.7%	F9	59.1%
Total	51.8%	85.0%	-33.2%	61.5%	60.5%	1.0%	87.5%	-26.0%	Total	58.8%

MDT Deprtng Load Factor



Airline Landed Weight Report July-20

Landed Weight	Actual	Budget	% Diff	Actual	Revised Budget	% Diff	Actual	% Diff	Airline	Revised
	July	July		YTD 2020	YTD 2020		YTD 2019			Projection
AA	17,869,436	31,469,051	-43.2%	143,353,988	145,058,502	-1.2%	188,837,668	-24.1%	AA	235,609,838
DL	7,358,000	16,166,085	-54.5%	57,611,000	56,363,632	2.2%	104,401,500	-44.8%	DL	97,267,600
UA	5,311,000	14,401,994	-63.1%	47,830,500	48,345,620	-1.1%	82,074,002	-41.7%	UA	78,961,500
G4	10,145,642	11,420,294	-11.2%	51,345,504	49,789,520	3.1%	64,927,072	-20.9%	G4	88,722,586
F9	568,792	3,882,005	-85.3%	10,101,954	10,082,757	100.0%	18,826,090	-46.3%	F9	13,230,310
Charters	268,962	-		268,962	-	100.0%	4,602,496	-94.2%	Charters	
Diversions	43,650	1,579,838	-97.2%	2,531,354	5,725,843	100.0%	10,895,278	-76.8%	Diversions	8,272,123
Cargo	34,814,500	30,539,447	14.0%	227,218,600	220,480,044	3.1%	239,720,360	-5.2%	Cargo	405,834,956
Total	76,379,982	109,458,715	-30.2%	540,261,862	535,845,918	0.8%	714,284,466	-24.4%	Total	927,898,913

MDT Landed Weights

