

Capital City Airport Obstruction Removal Project April 26, 2021



Goals

- Runway 8 Approach & Runway 26 Departure
- FAA Requirement - Maintain approach and departure surfaces identified by:
 - *Advisory Circular (AC) 150/5300-13A, Airport Design*
 - *FAA Order 8260.3B United States Standard for Terminal Instruments Procedures (TERPS)*



Goals

- Maintain and Enhance the Safety, Capacity, and Efficiency of Capital City Airport
- Clear Obstacles to Approach/Departure Paths
- Safety for Public and Pilots
- Environmental Stewardship
 - Minimize Impacts
- Community Involvement

Approach to Runway 8



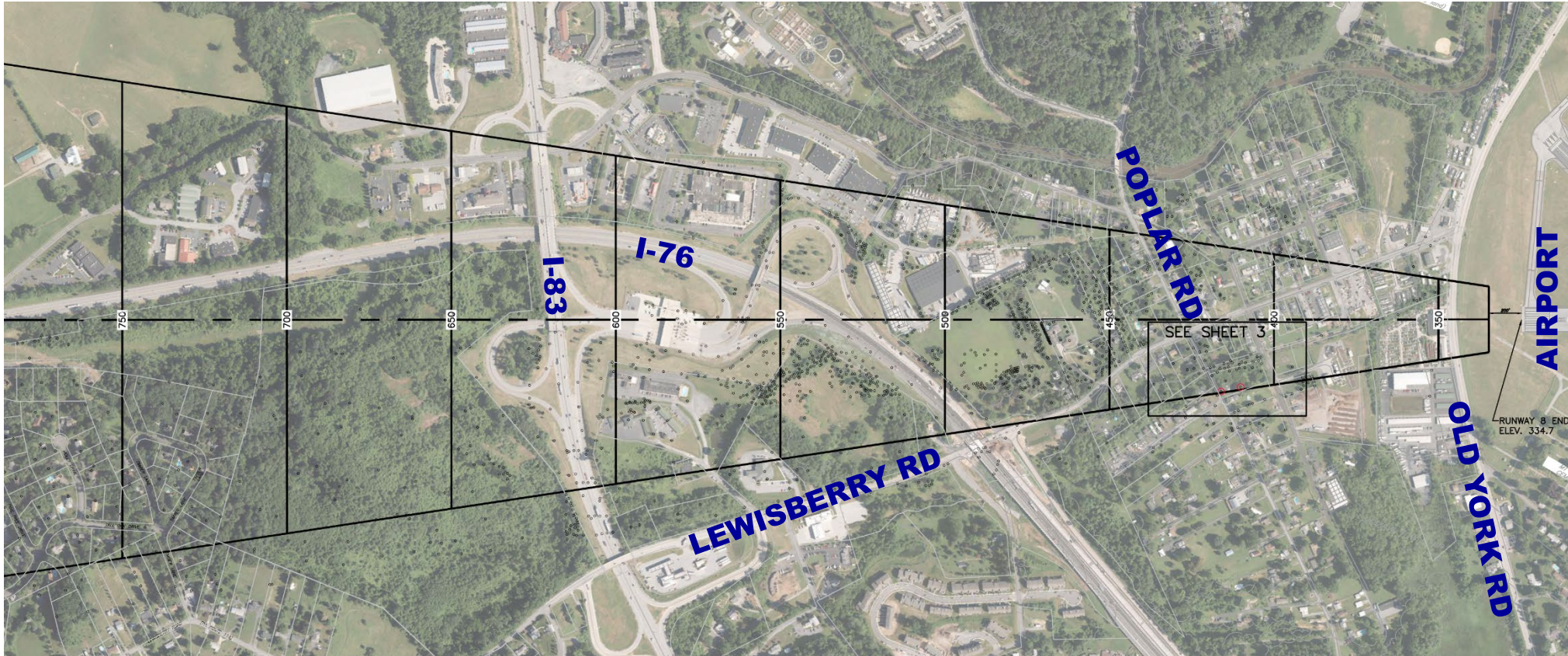
Background

- Annual Tree Trimming/ Routine Maintenance
- FAA Funding for Obstruction Removal Program
- 2017 Aerial Survey
- 2018-2019 Obstruction Analysis
- Obstructions Identified

FAA Runway Approach Surfaces

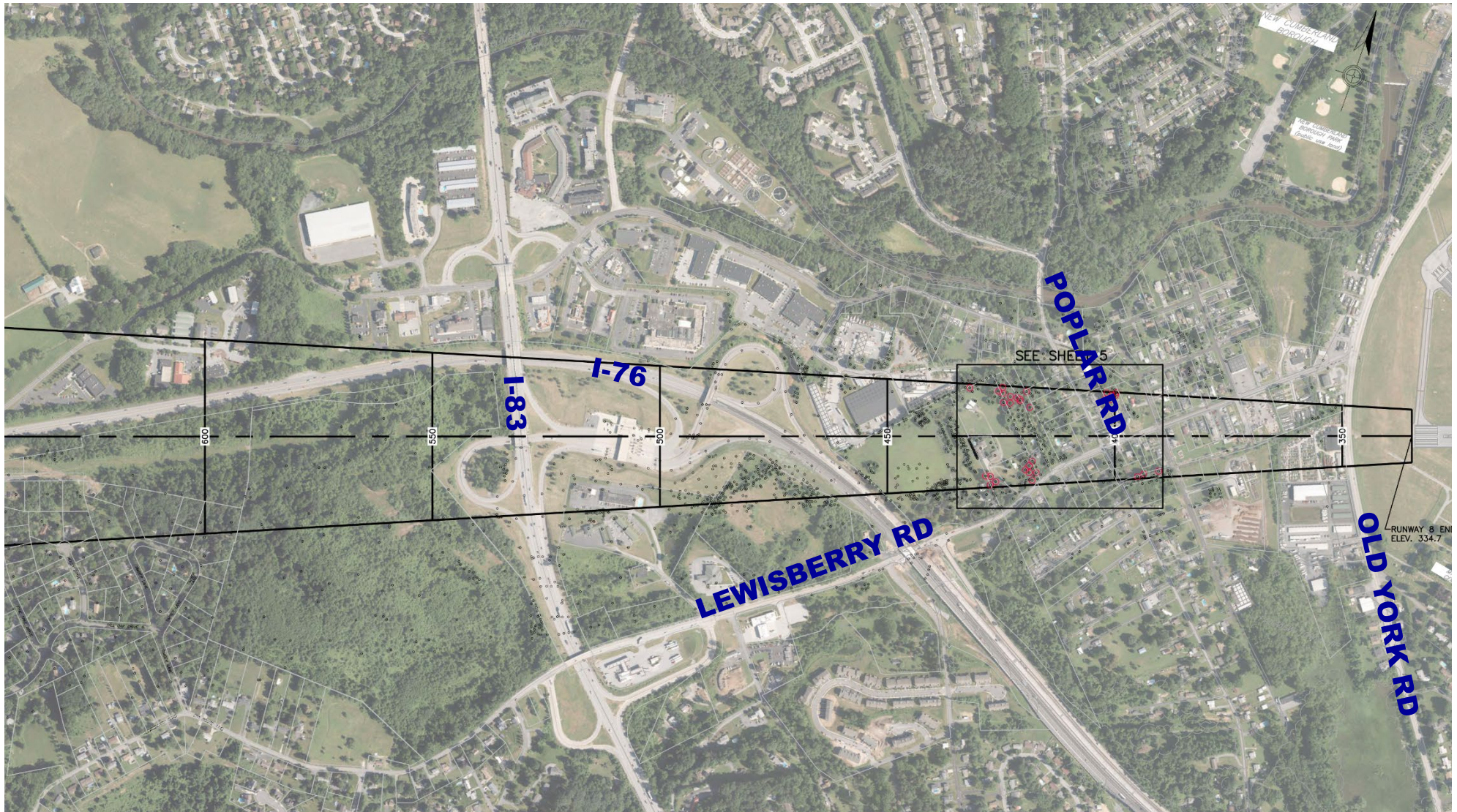
SURFACE	REFERENCE	
20:1 Approach Surface	Table 3-2, Row 4	EB No. 99
30:1 Obstacle Clearance Surface (formerly Glideslope Qualification Surface (GSQS))	Table 3-2, Row 6	EB No. 99
"W" OCS – Final Approach Segment – 34:1	Section 10-2	FAA Order 8260.3D
"X" OCS – Final Approach Segment	Section 10-2	FAA Order 8260.3D
"Y" OCS – Final Approach Segment	Section 10-2	FAA Order 8260.3D
Departure Surface (Climb Gradient) 300' per NM (20.25371:1)	Table 3-2, Row 7	EB No. 99, CXY Departure Procedures

Obstruction Mitigation Plan



RW 8 – 20:1 APPROACH

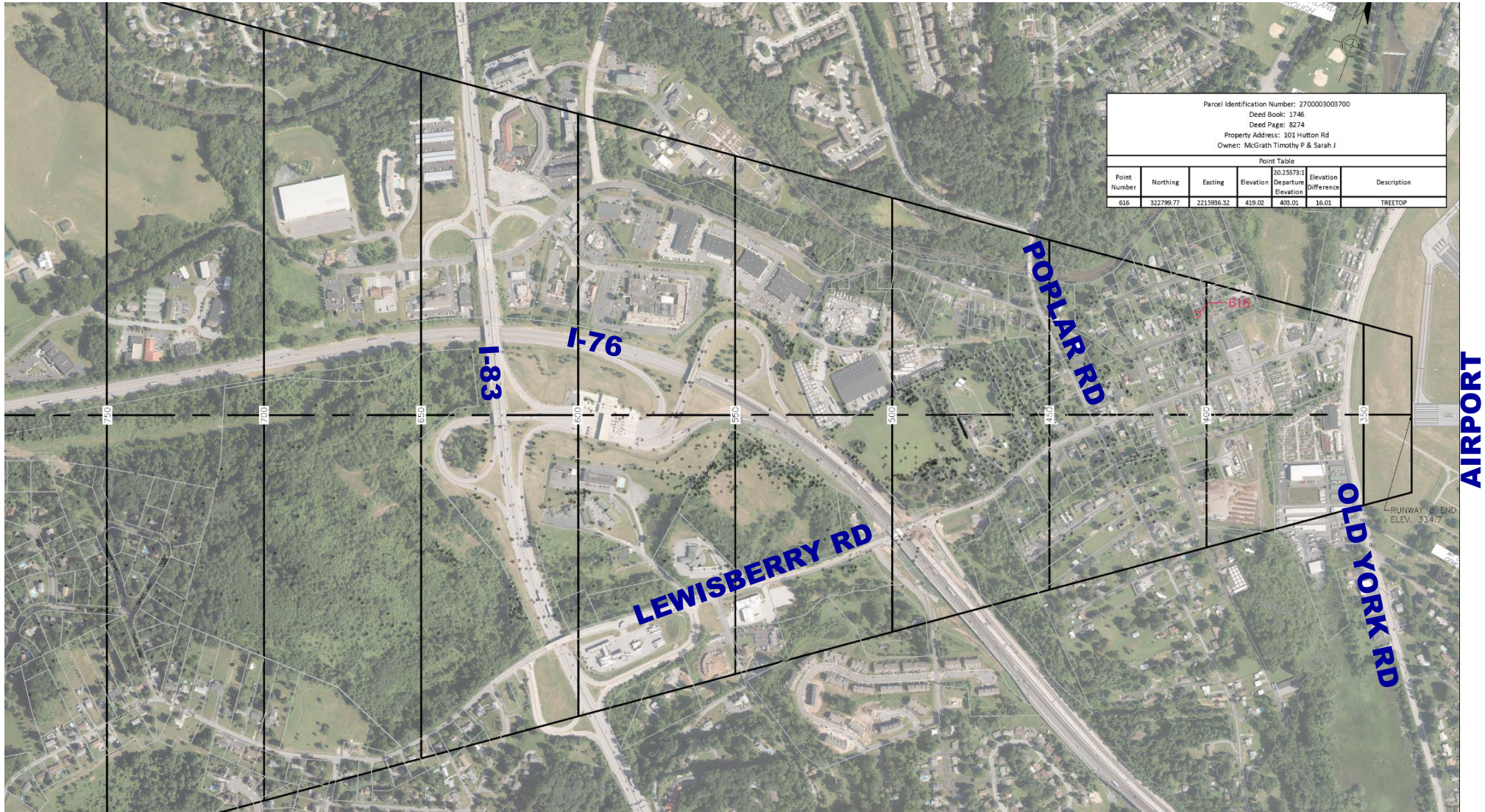
Obstruction Mitigation Plan



AIRPORT

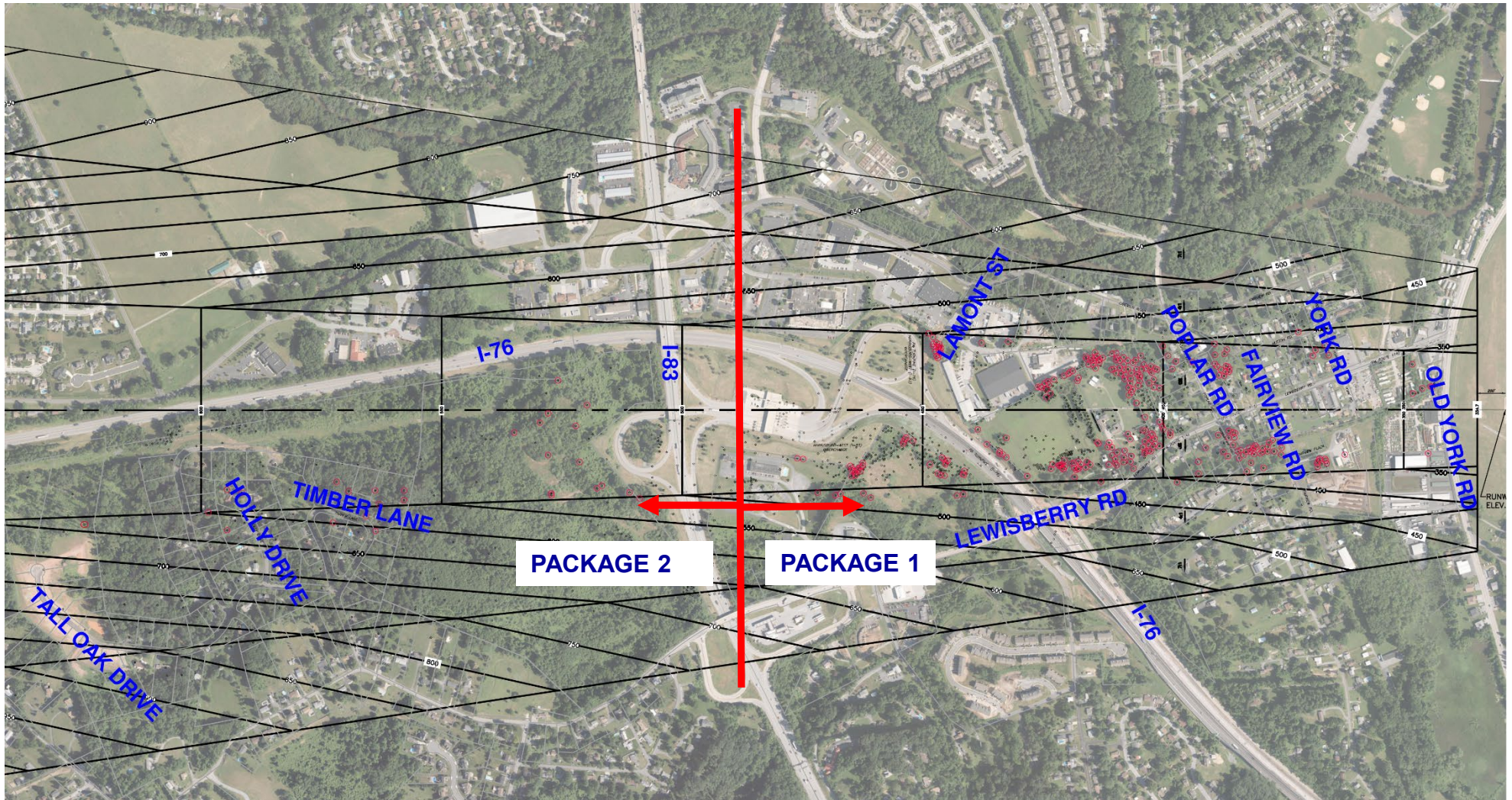
RW 8 – 30:1 APPROACH

Obstruction Mitigation Plan



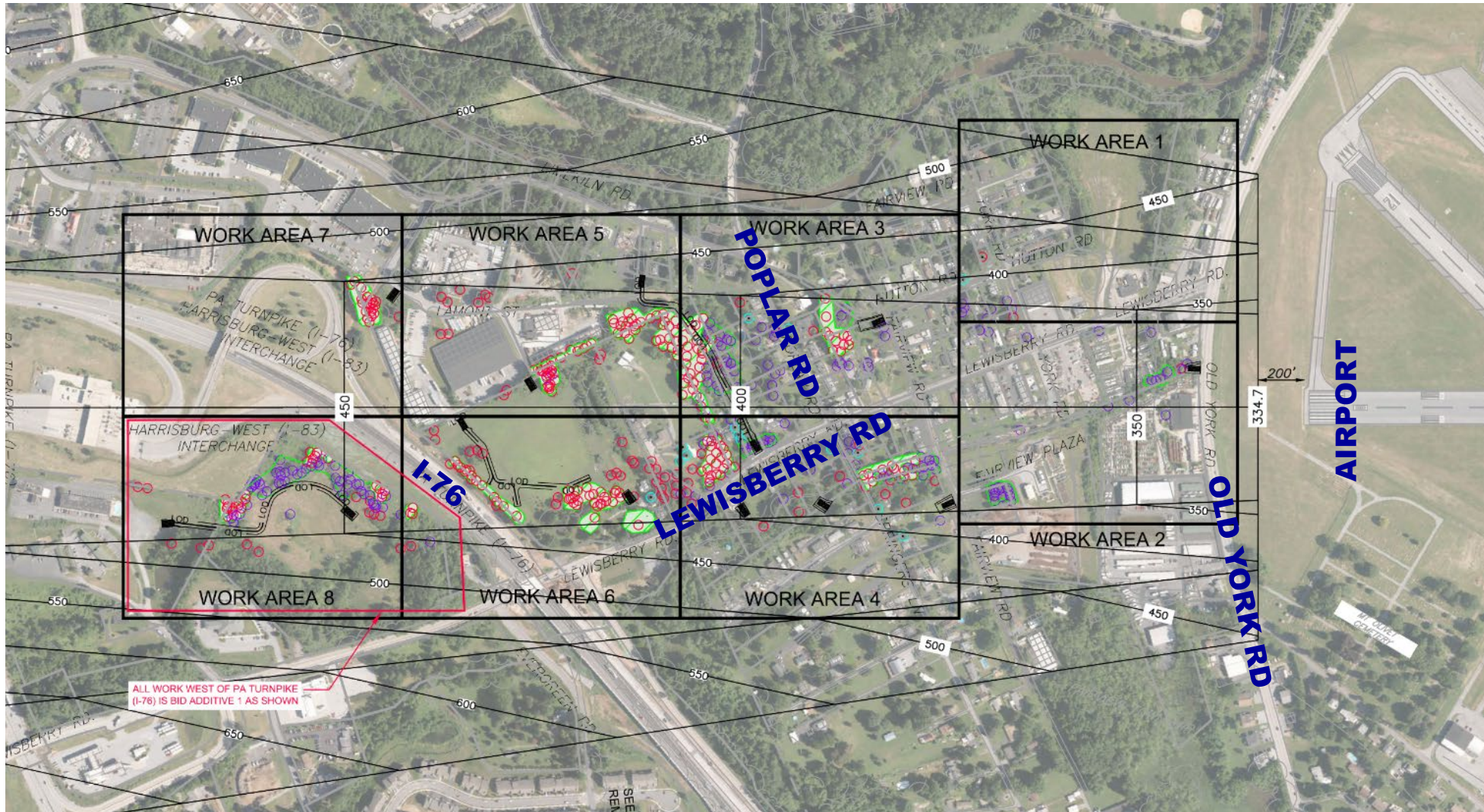
RW 8 – DEPARTURE WITH CLIMB GRADIENT

Obstruction Mitigation Plan



RW 8 – TERPS FINAL APPROACH

Package 1



Package 1 Summary

- **PROPERTIES IMPACTED** **53**
- **# ISOLATED TREES TO BE CLEARED** **87**
- **# ISOLATED TREES TO BE TRIMMED** **77**
- **ACRES OF TREE CANOPY CLEARING** **7.1**
- **ACRES OF TREE CANOPY TRIMMING** **3.6**

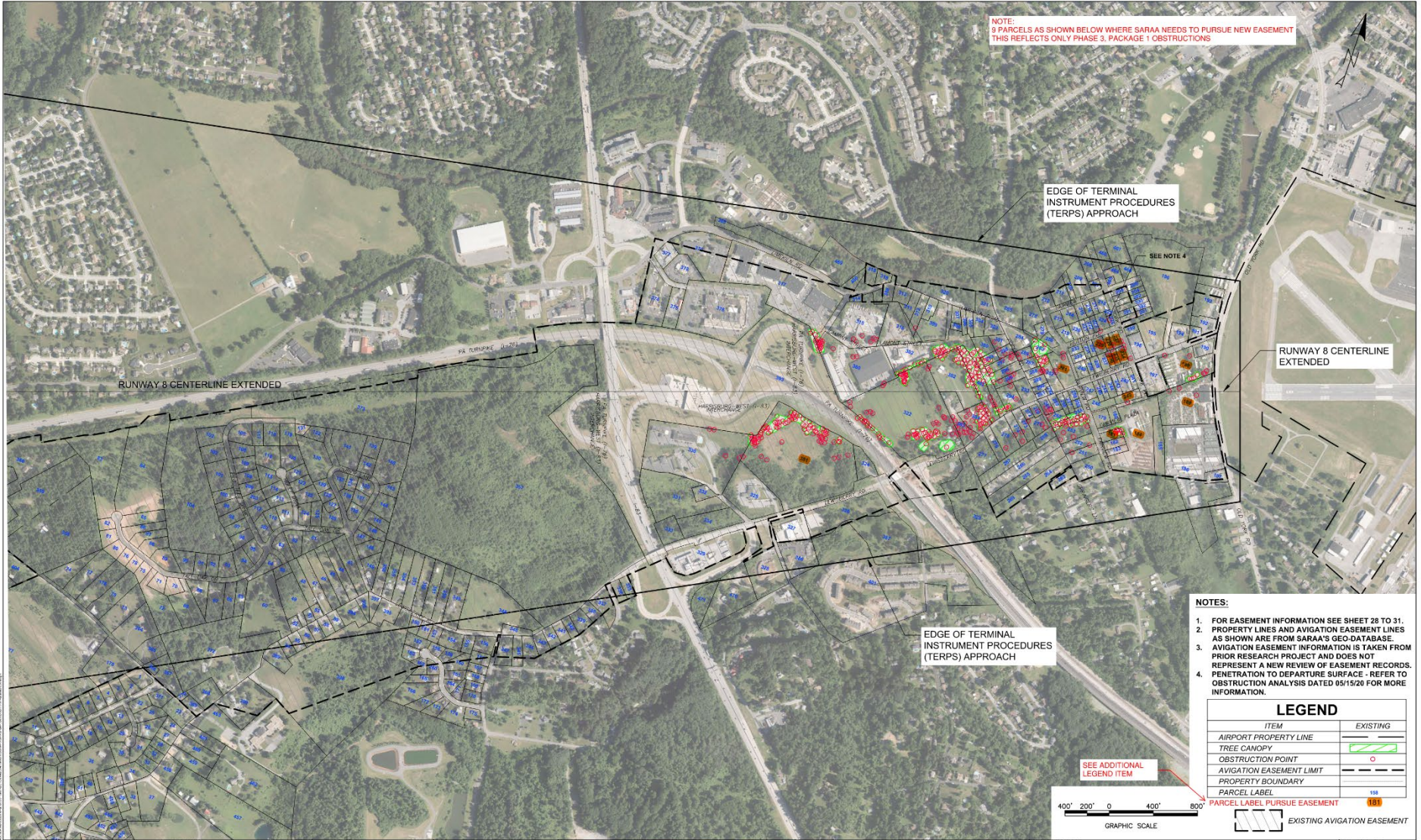
- **Quantities are approximate**

- **Clearing to TERPS Final Approach and Climb Departure provides clearance of all other surfaces**

Community Coordination

- Public Meeting via Zoom, July 15, 2020
- Letters to Property Owners, April 2021
- Identify New Easements / Temporary Easements
- Meetings with Individual Property Owners
- Determine Tree Trimming/ Clearing Requirements
- Minimize site impacts and restore site after Trimming/Clearing

Easements



NOTE:
9 PARCELS AS SHOWN BELOW WHERE SARAA NEEDS TO PURSUE NEW EASEMENT
THIS REFLECTS ONLY PHASE 3, PACKAGE 1 OBSTRUCTIONS

EDGE OF TERMINAL
INSTRUMENT PROCEDURES
(TERPS) APPROACH

RUNWAY 8 CENTERLINE EXTENDED

RUNWAY 8 CENTERLINE
EXTENDED

EDGE OF TERMINAL
INSTRUMENT PROCEDURES
(TERPS) APPROACH

- NOTES:**
1. FOR EASEMENT INFORMATION SEE SHEET 28 TO 31.
 2. PROPERTY LINES AND AVIGATION EASEMENT LINES AS SHOWN ARE FROM SARAA'S GEO-DATABASE.
 3. AVIGATION EASEMENT INFORMATION IS TAKEN FROM PRIOR RESEARCH PROJECT AND DOES NOT REPRESENT A NEW REVIEW OF EASEMENT RECORDS.
 4. PENETRATION TO DEPARTURE SURFACE - REFER TO OBSTRUCTION ANALYSIS DATED 05/15/20 FOR MORE INFORMATION.

LEGEND	
ITEM	EXISTING
AIRPORT PROPERTY LINE	
TREE CANOPY	
OBSTRUCTION POINT	
AVIGATION EASEMENT LIMIT	
PROPERTY BOUNDARY	
PARCEL LABEL	
PARCEL LABEL PURSUE EASEMENT	
EXISTING AVIGATION EASEMENT	

SEE ADDITIONAL
LEGEND ITEM



ENGR./ARCH. J.D.S.	REVISIONS			
	NO.	DESCRIPTION	BY	DATE
DESIGNED BY J.D.S.				
DRAWN BY J.D.S.				
CHECKED BY L.J.D.				
DATE 07/2020				



PROJECT TITLE	CAPITAL CITY AIRPORT REMOVE OBSTRUCTIONS, PHASE 3	FAA AIP NO.	3-42-0038-037-2019
SHEET TITLE	AIRPORT EASEMENT MAP	SARAA PROJECT NO.	2014-020
SCALE	As Shown	DATE	MARCH 2021
		SHEET NO.	27 of 35

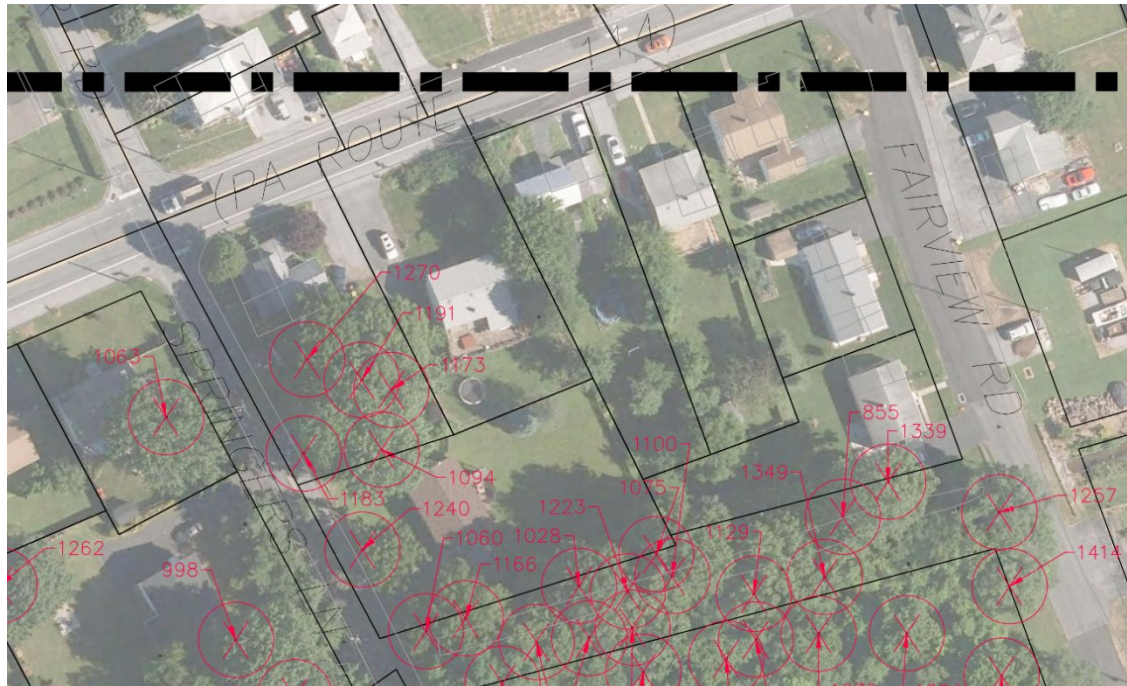


Capital City Airport Runway Obstruction Removal Project



Obstruction and Easement Data

ID	NO.	DESCRIPTION	NORTHING	EASTING	TREE ELEV.	TYPE OF SURFACE	SURFACE ELEV.	PENETRATION	GROUND ELEV.	OBJECT HEIGHT	EASEMENT FOR PROPERTY?	EASEMENT NUMBER	EASEMENT ELEVATION	ADDRESS
47	1094	TREETOP	321829.7980	2215711.9870	395.68	TERPS	385.19	10.50	325.96	69.72	YES	17	369.62	65 SPRINGERS LN
48	1183	TREETOP	321813.9880	2215673.6030	391.97	TERPS	386.41	5.56	326.71	65.25	YES	17	370.36	65 SPRINGERS LN
49	1173	TREETOP	321861.5630	2215706.3540	391.70	TERPS	385.03	6.67	325.91	65.79	YES	17	369.58	65 SPRINGERS LN
50	1191	TREETOP	321861.1460	2215689.7010	391.03	TERPS	385.50	5.53	325.96	65.07	YES	17	369.87	65 SPRINGERS LN
51	1270	TREETOP	321861.9440	2215658.6510	388.63	TERPS	386.35	2.28	326.88	61.76	YES	17	370.42	65 SPRINGERS LN



GOAL IS TO TRIM TO THE EASEMENT ELEVATION

Schedule – Package 1

- Spring/Summer 2021: Property Owner Coordination
- Spring/Summer 2021: Permitting
- June 2021: Obtain FAA Grant
- October 2021: Award Contract
- Winter 2021/ Spring 2022: Trimming/Clearing
- Project Completion: December 2022

Point of Contact:

David Spaulding 717-948-3900
DSpaulding@saraa.org

Presentation Location

<http://www.flyhia.com>

At bottom of Home page click on Airport Authority

Questions?



Point of Contact:

David Spaulding 717-948-3900

DSpaulding@saraa.org

Presentation Location

<http://www.flyhia.com>

At bottom of Home page click on Airport Authority